

Louisiana Department of Transportation and Development

Training Requirements Catalog

Technology Transfer and Training (Revised August 2025)





(intentionally blank)



Table of Contents

GENERAL REQUIREMENTS	6
Introduction to DOTD Training	6
Terminology.....	7
State and Agency Mandated Training.....	8
Employee Requirements – all employees.....	8
Supervisor Requirements - Classified Supervisors	8
Supervisor Requirements - Unclassified Supervisors	9
Non-State Employees with “P” Numbers	9
DOTD LP Hazardous Materials – all employees – course(s) depend on work location	9
Civil Service (CPTP) Requirements	10
SCS CPTP Supervisory Group Programs.....	10
SCS CPTP Continuing Education for Supervisors	11
SCS CPTP CPM for Employees.....	11
DOTD Leadership Development – PPM 59, Appendix A	12
<i>DOTD Leadership Development Program Level 1 - Entry</i>	12
<i>DOTD Leadership Development Program Level 2 - Staff</i>	12
<i>DOTD Leadership Development Program Level 3 - Manager</i>	12
<i>DOTD Leadership Development Program Level 4 - Administrator</i>	13
<i>DOTD Leadership Development Program - Technicians</i>	13
Computer Training at DOTD	14
CADD, GIS, and PC Courses	14
<i>DOTD PC Computer Program – Admin Coordinators/Admin Assistants</i>	14
<i>DOTD PC Computer Program – Technicians</i>	14
Loss Prevention	15
Equipment Operator Certification Program (EOCP).....	16
ATSSA Traffic Control Technician (TCT) and Supervisor (TCS).....	17
Structured Training Introduction and Overview	18
Engineering Technicians and Construction Inspectors – PPM 59, Appendix B	18
Maintenance Jobs - PPM 59, Appendix C	20
Engineering Interns – PPM 59, Appendix D.....	20

DOTD Training Requirements Catalog



Specialty Areas, Authorizations, and Certifications – PPM 59, Appendix E.....	20
Administrative Assistants and Administrative Coordinators – PPM 59, Appendix F.....	20
DOTD Enforcement Jobs – PPM 59, Appendix I.....	21
Human Resources Professionals - PPM 59, Appendix L.....	21
JOB TITLES and DOTD TRAINING REQUIREMENTS as of August 2025	22
Classified Job Titles	22
Unclassified Job Titles.....	30
STRUCTURED TRAINING for ENGINEERING TECHNICIANS	31
Section Engineering Technicians.....	31
Office of Engineering - Section 19.....	32
Office of Engineering - Section 22.....	33
Office of Engineering - Section 23.....	34
Office of Engineering - Section 24.....	35
Office of Engineering - Section 25.....	36
Office of Engineering - Section 27.....	37
Office of Engineering - Section 28.....	38
Office of Engineering - Section 30.....	39
Office of Engineering - Section 33.....	41
Office of Engineering - Section 35.....	42
Office of Engineering - Section 36.....	42
Office of Engineering - Section 40.....	43
Office of Engineering - Section 64.....	44
Office of Engineering - Section 67.....	45
Office of Engineering - Section 80.....	45
Office of Operations - Section 42.....	46
Office of Operations - Section 45.....	47
Office of Operations - Section 51.....	48
Office of Planning - Section 21.....	49
Office of Planning - Section 82.....	50
Office of Planning - Section 85.....	50
District Engineering Technicians	51
District Utility Permits (A:UTPR).....	52
District Design – Contracts and Specs (D:CNSP).....	53
District Design – Road Design (D:ROAD).....	54

DOTD Training Requirements Catalog



District Design - Survey (D:SURV)	55
District Traffic Engineering (D:TRAF)	57
District Rail Coordinator (A:RAIL)	58
District Area Engineer Assistant (D:AEAS)	59
District Construction Inspection, Lab and Training – General Information	60
District Construction Inspectors (C:INSP)	61
District Laboratory	62
District Office Technicians - Construction Inspection and Lab	63
District Training Technicians (A:TRNG)	64
District Construction Inspection, Lab and Training - Specialty Areas	65
District Construction Inspection, Lab and Training – Miscellaneous	67
District Construction Inspection, Lab and Training - Authorizations	68
District Construction Inspection and Training - Certifications	70
STRUCTURED TRAINING for MAINTENANCE JOBS	71
Introduction to Maintenance Jobs	71
Mobile Equipment Operators	73
Highway Foreman 1 and Parish Highway Maintenance Superintendent	75
Roadside Development	77
District Sign Specialists	78
Bridge Operators and Navigational Lock Operators	80
Highway Foreman 2	81
Highway Sign/Pavement Marking Supervisor	82
Transportation Operations Manager	83
Maintenance Trades	86
Carpenters, Maintenance Repairers, Painters, Plumbers, Welders, Trade Apprentice	86
Electricians, Electrician Specialists, Electronic Technicians	86
Sheet Metal Workers	88
Equipment Inspectors and Superintendents	89
Mechanics	90
Bridge Inspectors	91
Ferryboat Jobs and Personnel at Plaquemine Fleet Landing	95
ITS Technicians	96
SELECT COURSES - ASSIGNMENTS in PROGRAMS / CURRICULA	97
DOTD ATSSA TCT, TCS, TCSR	97

DOTD Training Requirements Catalog



DOTD ATSSA Traffic Control Supervisor (TCS) Louisiana Specific - Expires 4 years	98
DOTD BP Ethics for Construction WBT – Expires 3 years	98
DOTD LP Boating Safety Course WBT-External.....	98
DOTD LP Boating Safety Refresher WBT – Expires 3 years	98
DOTD LP Confined Spaces Class ILT	99
DOTD LP Confined Spaces WBT - Expires 3 years.....	99
DOTD LP Lockout/Tagout WBT - Expires 1 year	99
DOTD LP Hazardous Materials FULL Course WBT.....	100
DOTD LP Hazardous Materials Annual Refresher WBT - Expires 1 year	100
DOTD NU Radiation Safety Refresher WBT – Expires 3 years.....	101
DOTD STW Basic Flagging.....	102
DOTD STW Basic Flagging Refresher WBT – Expires 4 years.....	103
DOTD STW Maintenance Traffic Control	103
DOTD STW Maintenance Traffic Control Refresher – Expires 4 years.....	104



GENERAL REQUIREMENTS

Introduction to DOTD Training

DOTD Policy and Procedures Manual (PPM) No 59, subject Workforce Development, is the base document for training requirements at DOTD. Its appendices address details of various types of general training requirements and also requirements for certain groups of jobs. The current policy may be viewed at: <http://www.dotd.la.gov/media/x0plzplf/59-workforce-development.pdf>

In January 2023, the state migrated to a new Learning Management System (LMS) called Success Factors (SF). The new system required DOTD to restructure existing training requirements based on what the LMS supports. Requirements may be general in nature; ex: all employees, all supervisors; or specific to job titles and/or work locations (organizational units).

This document, DOTD Training Requirements Catalog, provides an explanation of training requirements as defined in the LMS and gives additional details and guidance on required training. Access it from the LTRC Internet or Intranet site at https://www.ltrc.lsu.edu/pdf/Training_Requirements.pdf

A companion document to this catalog is the DOTD Course Catalog which provides details on all courses offered by DOTD/LTRC and courses provided by others that are included in required training. It can be accessed from the LTRC Internet or Intranet site at https://www.ltrc.lsu.edu/pdf/DOTD_Course_Catalog.pdf

The Louisiana Transportation Research Center (LTRC) Technology Transfer and Training section, manages all training requirements for DOTD. The majority of the training provided at DOTD is produced by LTRC or obtained from or scheduled with outside sources. Within LTRC, the Internal Training Unit oversees how DOTD uses the LMS and defines the Programs, Curricula, and assignment profiles in the LMS.

Employees: use SF-My Learning to view and take assigned training or register for courses.
May also use DOTD Intranet -> LTRC Employee Training Records (DTRN) to view My Records.

Supervisors: use SF-My Team to view the status of their employees and can assign additional training.
May also use DOTD Intranet -> LTRC Employee Training Records (DTRN) to view My Employees.

Training Assistance:
Each DOTD District has a Training Office.
Each DOTD Section has a Training Liaison.

E-mail LTRC with questions about training requirements: DOTD-LTRC-Training-Help@la.gov

DISCLAIMER: This document is provided as a reference catalog for Training Requirements for DOTD employees. If in conflict, the existing LMS definitions and assignments are the official requirements.



Terminology

SuccessFactors (SF), accessed through the LaGov Portal, is the Learning Management System (LMS) for the state of Louisiana.

Courses – the name of an item that is taken or scheduled in the LMS, and for which a learner can receive credit for. These are the names that are seen in SF and that are seen under the Programs and Curricula listed in this catalog. In SF, credit for courses can be seen in the **Learning History** or on a **Transcript**.

Learning Types and Delivery Methods – these are SF terms.

- **Online (WBT)** – training that can be taken in SF. (If it is an External site WBT, it will be Other.)
- **Instructor-Led (ILT)** – training conducted in a classroom or Zoom session that is scheduled in SF.
- **Other** – Training that must be scheduled with the District Trainer or LTRC and is usually a manual with a test, a performance evaluation, or a type of training that is not scheduled in SF. The District Trainer or LTRC will give credit in SF when the training is complete.

Expiration date: The LMS does not provide for expiration dates on courses. This is accomplished in the LMS by putting “expiring” courses in a curriculum and requiring them to be repeated on a defined period.

DOTD Course titles in the LMS will clearly indicate expiration time periods when applicable.

Ex: DOTD LP Defensive Driving WBT - Expires 3 years

An expiration date shown in DTRN will be the completion date plus the expiration time period.

Curriculum - consists of a course or list of courses.

- Each Course can be given a “required by” date.
- Any course can require “retraining” by a specific time period after last completed.
- Individual courses are shown in the SF “Required Learning” list.

Program - consists of **Sections**, which have a name. Sections consist of courses.

- The entire program or each individual Section can have a “required by” date.
- Only the program is shown in the SF “Required Learning” list. Click on program to see the courses.

People may be assigned to multiple Programs and/or Curricula.

In this catalog, program and curriculum names will be in ***bold italics***, followed by a table of courses.

Assignment of Training

Curricula and Programs are usually automatically assigned in SF based on criteria DOTD has established. Training may also be manually assigned by LTRC, District Trainers, or Supervisors, or be self-assigned. Throughout this catalog, references are made as to Job Codes and/or Org Units used in the assignment.

Supervisor – In SF, an employee with any direct reports. We may also designate supervisors by Job code.

Job Codes – Civil Service job codes for job titles.

District/Section and Unit are DOTD specific terms, and with SF data, can be derived from the **Org Unit Name**.

Note: Units may have multiple Org Units, but an Org Unit only appears in one Unit.

Org Units are codes, with each having an **Org Unit Name**. DOTD follows a specific format for the name.

D##/G### ... or S##/G### ... where D=District, S=Section. G indicates Unit. (previously Gang)

Unit Numbers have specific meanings in DOTD in the Districts and Operations sections (42, 45, 51).

002/003:Dist Traffic 051:Bridge Insp 07x:Repair Shops 15x:Dist Labs 170:Dist Design
2xx:Dist Constr Insp 5xx:Parish Maint 7xx:Dist/Statewide Maint 8xx:Marine Ops 9xx:Bridge Ops



State and Agency Mandated Training

DOTD has obtained the course materials for state mandated training and created a “DOTD” version. Employees should take the DOTD version. If the state version was taken, the employee may request credit for the DOTD version. DOTD requirements only check for the DOTD version.

Employee Requirements – all employees

DOTD Basic Curriculum for Employees

Initially due in the number of days shown below. If the course “expires”, it must be repeated on or before the date it would be expired. If an employee does not drive, a waiver credit may be given. (not job 00800010)

Courses Required	Days	Reason for Requirement
DOTD HR Cybersecurity Awareness	60	RS 42:1267
DOTD HR New Employee Orientation	42	DOTD HR
DOTD HR Substance Abuse All Employees - Expires 3 years	30	DOTD policy
DOTD HR Workplace Violence All Employees - Expires 3 years	30	DOTD policy
DOTD LP Defensive Driving WBT - Expires 3 years	30	Office of Risk Management
DOTD LP Bloodborne Pathogens WBT - Expires 5 years	30	Office of Risk Management
DOTD LP Office Safety WBT	60	DOTD policy – new Jan 2025

DOTD Basic Yearly Curriculum for Employees

A new curriculum is created each calendar year. The curriculum is not assigned to employees hired after October 1st of a calendar year. Do not wait to do these courses! (not job 00800010)

Courses Required	Due	Reason for Requirement
DOTD 2025 Ethics - La Board of Ethics	10/15	RS 42:1170
DOTD 2025 Prevent Sexual Harassment for Employees	10/15	RS 42:343

Supervisor Requirements - Classified Supervisors

“Supervisor” for purposes of these programs is determined by if the employee has any direct reports.

DOTD Basic Curriculum for Supervisors

Due 90 days from becoming a supervisor. Courses that expire must be repeated on or before the expiration.

Courses Required	Days	Reason for Requirement
DOTD HR ADA Compliance for Supervisors - Expires 3 years	90	RS 46:2595
DOTD HR Substance Abuse Supervisors - Expires 3 years	90	DOTD policy
DOTD HR Workplace Violence Supervisors - Expires 3 years	90	DOTD policy
DOTD HR Selecting the Best	90	DOTD policy
DOTD HR New Supervisor Orientation	90	DOTD policy

DOTD Basic Yearly Curriculum for Supervisors

New curriculum each calendar year. Does not apply to new Supervisors after October 1st of a calendar year.

DOTD 2025 Prevent Sexual Harassment for Supervisors	10/15	RS 42:343
---	-------	-----------



Supervisor Requirements - Unclassified Supervisors

DOTD Basic Curriculum for Unclassified Supervisors

Each calendar year, the course for the year is changed in the curriculum.

Courses Required	Days	Reason for Requirement
DOTD 2025 Prevent Sexual Harassment for Supervisors	10/15	RS 42:343
DOTD HR ADA Compliance for Supervisors - Expires 3 years	90	RS 46:2595
DOTD HR Substance Abuse Supervisors - Expires 3 years	90	DOTD policy
SCS CPTP Performance Management for Executives	365	RS 42:1266 (one time)
SCS CPTP CPM Basics	90	Civil Service Policy

Non-State Employees with “P” Numbers

Contractors and other non-state employees who obtain a Personnel Number for purposes of working within the ERP system for DOTD are required to take specific training in the LMS. Their job code is 00800010.

DOTD Basic Curriculum for Non-State Employees

Due when individual has been in the system for 90 days.

DOTD HR Cybersecurity Awareness	60
DOTD 2025 Ethics - La Board of Ethics	10/15
DOTD 2025 Prevent Sexual Harassment for Employees	10/15

Each calendar year, the courses for the year are changed in the curriculum.

DOTD LP Hazardous Materials – all employees – course(s) depend on work location

Required of all employees in the Districts and all employees in Sections 19, 22, 28, and Section 42 Units 006, 071, 072, 862 and Section 51 Units 700, 720, 726, 727, 728, and 740.

DOTD Basic LP Curriculum - Hazardous Materials Full Course

DOTD LP Hazardous Materials Full Course WBT	Required in 30 days
---	---------------------

The Annual Refresher is required for all employees in the District Labs and Sections 19, 22, and 28. Maintenance employees in the Districts and Operations Sections who need the refresher will see it in the Training Curricula for their job.

DOTD Curriculum LP Hazardous Materials Refresher

DOTD LP Hazardous Materials Annual Refresher WBT - Expires 1 year

OR

Required of all other employees not in the Districts or the Sections requiring Full Course. The Full course can substitute for the Labels-Symbols version.

DOTD Basic LP Curriculum - Hazardous Materials Labels-Symbols

DOTD LP Hazardous Materials Labels-Symbols WBT	Required in 30 days
--	---------------------

Other Loss Prevention courses may be required on a Job specific basis OR Individually.

These include Blood borne Pathogens Hi-Risk, Boating Safety and Refresher, Confined Spaces, and Lockout-Tagout. Other courses may be added and required within the LMS without a specific revision to this manual.



Civil Service (CPTP) Requirements

SCS CPTP Supervisory Group Programs

Employees in *classified* job titles that are assigned to a Supervisory Group by Civil Service will be auto-assigned to the appropriate program. (See Job Titles, column CS for the group assignment, if any.) Programs and Due Dates are defined by CPTP. **PPM 59, Appendix H** addresses these requirements.

The LMS is used by employees to take the **web-based (WBT) courses** and schedule required **classroom (ILT) courses**. Web-based courses should be taken as soon as possible as they must be completed before the classroom course may be taken. The “classroom” training is delivered as a single day in-person course or can be completed by scheduling and completing in sequence, three separate two hour zoom sessions.

A supervisor will only be in one of the Supervisory programs at a time. It will consist of all sections required for the program. The Due Date is set as determined by CPTP for each section in the program.

- **SCS CPTP Group 1 Supervisory Program** consists of the CORE and Group 1 sections.
- **SCS CPTP Group 2 Supervisory Program** consists of CORE, Group 1 and Group 2 sections.
- **SCS CPTP Group 3 – SCS CPTP Supervisory Online Core**, consists only of CORE Web-Based Courses. CPTP is not assigning training to Group 3 people as of the date of this publication.

<https://civilservice.louisiana.gov/images/pictures/TrainingPhotos/2023%20MTR%20Graphic.png>

CORE Sections: Due 6 months after assignment to program	
CORE Web-Based Courses	
SCS CPTP Civil Service Essentials for Supervisors	
SCS CPTP Common Myths that Affect Good Supervision	
SCS CPTP Hiring and Retaining Top Talent	
SCS CPTP Leave Management	
SCS CPTP Validating Employee Performance	
CORE Capstone	
SCS CPTP 2015 Core Capstone Workshop	Classroom: in-person or via zoom

Group 1 Sections: Due 2 years after assignment to program	
Group 1 Web-Based Courses	
SCS CPTP Building Trust	
SCS CPTP Work Processes	
SCS CPTP Change Management	
SCS CPTP Top Down Communication	
SCS CPTP Emotional Intelligence 1	
SCS CPTP Inspirational Leadership	
SCS CPTP Situational Leadership 1	
SCS CPTP Conflict Management	
SCS CPTP Delegating Effectively	
Group 1 Capstone	
SCS CPTP 2015 Group 1 Capstone Workshop	Classroom: in-person or via zoom



Group 2 Sections: Due 4 years after assignment to program	
Group 2 Web-Based Courses	
SCS CPTP Organizational Dynamics	
SCS CPTP Emotional Intelligence 2	
SCS CPTP Ethical Leadership	
SCS CPTP Prioritizing Mission Critical Tasks	
SCS CPTP Situational Leadership 2	
SCS CPTP Strategic Thinking	
SCS CPTP Work Life Balance	
SCS CPTP Critical Thinking	
Group 2 Capstone	
SCS CPTP 2015 Group 2 Capstone Workshop	Classroom: in-person or via zoom

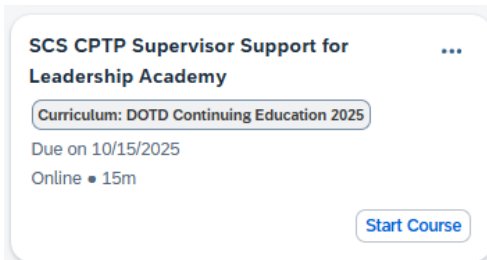
SCS CPTP Continuing Education for Supervisors

Supervisors who are in Groups 1 or 2 and who have completed their Group Supervisory Program by the end of the last calendar year are required to complete Continuing Education in all subsequent years. CPTP designates the course(s) that qualify as Continuing Education each calendar year. DOTD runs a report and assigns the program to all P IDs that fit the requirements as of January 1 of the requirement year.

DOTD CPTP Curriculum - Supervisor Continuing Education 2025

People who need to complete Continuing Education in 2025 have been assigned to a DOTD curriculum that contains the course. It is listed in an employee’s Required Learning section as shown below.

SCS CPTP Supervisor Support for Leadership Academy	Due by Dec 1 of year of curriculum
--	------------------------------------



This course is about the OPTIONAL CPTP Leadership academy. This is not to be confused with the DOTD Leadership Development Program.

Upon completion of the course, two credits will be shown on the employee transcript:

- SCS CPTP Continuing Education 2025
- SCS CPTP Supervisor Support for Leadership Academy

SCS CPTP CPM for Employees

All CLASSIFIED employees are required to complete the Basic CPM course once; WAE employees and unclassified employees are exempt. Unclassified Supervisors will be assigned the course in their curriculum.

DOTD CPTP Curriculum – CPM for Employees

SCS CPTP CPM Basics	Due in 90 days
---------------------	----------------



DOTD Leadership Development – PPM 59, Appendix A

The Leadership Development category of training is defined in **PPM 59, Appendix A**. Employees are auto-subscribed to a Leadership Program based on their job title. (See Job Titles, column LD.)

A person will be in only one Leadership program at a time. Programs levels build, so higher levels may contain courses required at lower levels. All courses are instructor-led and only need to be taken once.

Courses in the “Fundamentals” section of a program must be complete to be eligible for permanent status.

DOTD Leadership Development Program Level 1 - Entry

Courses in the program are due within 2 years of assignment to the program.

1.	Fundamentals	Due Date: 2 years
1.01	DOTD LD Foundations of Leadership Development	
1.02	DOTD LD Emotional Intelligence	

DOTD Leadership Development Program Level 2 - Staff

All courses in the program are due within 3 years of assignment to the program.

1.	Fundamentals	Due Date: 2 years
1.01	DOTD LD Foundations of Leadership Development	
1.02	DOTD LD Emotional Intelligence	
2.	Staff Level Courses	Due Date: 3 years
2.01	DOTD LD Conflict Management	
2.02	DOTD LD Professional Writing	
2.03	DOTD LD Organizational Culture	

DOTD Leadership Development Program Level 3 - Manager

All courses in the program are due within 3 years of assignment to the program.

1.	Fundamentals	Due Date: 2 years
1.01	DOTD LD Foundations of Leadership Development	
1.02	DOTD LD Emotional Intelligence	
2.	Staff and Manager Level Courses	Due Date: 3 years
2.01	DOTD LD Conflict Management	
2.02	DOTD LD Professional Writing	
2.03	DOTD LD Organizational Culture	
2.04	DOTD LD Facilitation Skills for Managers	
2.05	DOTD LD Managing Across Generations/Transformational Leadership	



DOTD Leadership Development Program Level 4 - Administrator

Courses in the program are due within 3 years of assignment to the program.

1.	Leadership Core Courses
1.01	DOTD LD Foundations of Leadership Development
1.02	DOTD LD Emotional Intelligence
1.03	DOTD LD Organizational Culture
1.04	DOTD LD Managing Across Generations/Transformational Leadership

DOTD Leadership Development Program - Technicians

Most Technicians have Structured Training requirements that are usually required within the lower job levels. This Leadership Development program is assigned to technicians at the more senior levels which include Engineering Technician 5, Engineering Technician DCL and Engineering Technician 7.

Courses in the program are due within 3 years of assignment to the program.

1.	Leadership Development for Technicians
1.01	DOTD LD Foundations of Leadership Development
1.02	DOTD LD Emotional Intelligence
1.03	DOTD LD Professional Writing

Technicians may choose to take additional Leadership courses, or their supervisors may assign additional courses to them.

Questions about the Leadership programs may be sent to dotd-ltrc-training-help@la.gov .



Computer Training at DOTD

DOTD offers a large number of computer courses to employees to assist them in their jobs. Training is delivered by contractors. SuccessFactors is used to request or schedule courses.

Scheduling is coordinated through Melissa Lee Boyd – melissa.lee@la.gov.

CADD, GIS, and PC Courses

- DOTD CADD – Computer Aided Drafting and Design
- DOTD GIS – Geographic Information Systems and ARCGis
- DOTD PC – Personal Computers and Microsoft Software

CADD and GIS courses are not in “programs” in the LMS. Employees may assign courses to themselves or supervisors may require their employees to complete courses needed for their jobs.

DOTD PC courses. Windows Level 1 is now only taught on request and is not required. Employees may try to test out of some courses for credit and eligibility to take higher level courses. Follow instructions on the web... DOTD Intranet > LTRC Training Opportunities > Online Training.

Programs for basic PC training are auto assigned to employees in certain job titles.

(See Job Titles, column PC: A or T.) Supervisors may require other courses and employees are encouraged to take additional PC courses that may be useful in their jobs.

DOTD PC Computer Program – Admin Coordinators/Admin Assistants

See Job Titles at DOTD..., column PC = A for jobs required to complete this program.

The program is due within 3 years of assignment when first employed in a job title in the series.

DOTD PC MS One Note
DOTD PC MS Outlook Level 1
DOTD PC MS Outlook Level 2
DOTD PC MS Word Level 1
DOTD PC MS Word Level 2
DOTD PC MS Excel Level 1

DOTD PC Computer Program – Technicians

See Job Titles at DOTD..., column PC = T for jobs required to complete this program.

The program is due within 3 years of assignment when first employed in a job title in the series.

DOTD PC MS Outlook Level 1
DOTD PC MS Word Level 1
DOTD PC MS Excel Level 1

The program above is also assigned to all Bridge Inspectors, Section 45 Transportation Operations Managers, and Section 51 MEO Heavy 1 & 2 and Highway Foreman 2.



Loss Prevention

Loss Prevention courses required of all employees are addressed under State and Agency Mandated Training. These include: Bloodborne Pathogens, Defensive Driving, and Hazardous Materials. Other Loss Prevention courses are required by job title, work location, or manually assigned to individuals.

Loss Prevention courses that are required to be taken once will be assigned to employees in a Structured Training program in a section labeled “Safety”. These courses are usually required within 90 days of assignment to the STP.

Commonly required are:	DOTD LP Electrocutation Prevention WBT
DOTD LP Safe Driving WBT	DOTD LP Poisonous Plant Safety WBT
DOTD LP Heat Stress WBT	DOTD LP Power/Hand Tool Safety WBT
	DOTD LP Asbestos Awareness WBT

Loss Prevention courses that expire and must be retaken periodically will be assigned to employees in a Structured Training curriculum based on their job title or work location. A current record is always required.

Courses often required are:

- DOTD LP Hazardous Materials Annual Refresher - Expires 1 year
- DOTD LP Lockout/Tagout WBT - Expires 1 year
- DOTD LP Confined Spaces WBT - Expires 3 years
- DOTD LP Boating Safety Refresher WBT - Expires 3 years

Confined Spaces in-person course

Some employees may be required to attend in-person training by the name of:

DOTD LP Confined Spaces Class ILT

After completing the in-person course, employees will be assigned to complete the web-based course three years after the in-person training and every three years thereafter.

DOTD Curriculum LP Confined Spaces WBT after ILT course

DOTD LP Confined Spaces WBT – Expires 3 years

Boating Safety and Refresher

The initial Boating Safety course is taken in person from a recognized training entity or on the U.S. Boat external website. It is required in the STP for some jobs and may be individually required for other employees. Upon proof of completion, the training coordinator or LTRC will give credit for:

DOTD LP Boating Safety Course WBT-External

When Boating Safety is required for a job or work location, a curriculum will require the Refresher course:

DOTD LP Boating Safety Refresher WBT - Expires 3 years

Curricula available for individual assignment of expiring courses to employees.

DOTD Curriculum LP Hi-Risk Bloodborne Pathogens

DOTD LP Bloodborne Pathogens Hi-Risk - Expires 1 year

DOTD Curriculum LP First Aid and CPR

DOTD LP First Aid and CPR Class - Expires 2 years



Equipment Operator Certification Program (EOCP)

The EOCP program established training for over 70 categories of equipment, Training must be received and documented before a person can operate specific pieces of equipment.

Guidelines for the EOCP Program are on the DOTD Intranet at

<http://apps2/operations/equs/docs/eocp/EOCP%20Guidelines%20Manual%202023%20v3.0.pdf>

A separate EOCP Training Catalog goes into detail on training in the EOCP program and the curriculums that are available for assignment. http://ladotd/dtrn/Catalog_EOCP.pdf

Supervisors specify which equipment their employees will operate and the appropriate curriculum(s) will be assigned by the District Trainers.

EOCP Group for ESA
ATV-UTV
Chainsaw
Forklift
Generic Trailer
Lawn Mower
Outboard Motor
Power and Hand Tools
Power Attachment-Auger
Power Attachment-Cold Planer
Power Attachment-Grapple Bucket
Power Attachment-Mulcher-Grinder
Power Attachment-Pavement Breaker
Power Attachment-Post Driver
Power Attachment-Power Broom
Power Attachment-Wheel Saw
Salt Aggregate Spreader
Specialty Trailer-Asphalt Distributor
Specialty Trailer-Crack Sealer
Specialty Trailer-Crash Attenuator
Specialty Trailer-Culvert-Pipe Cleaner
Specialty Trailer-Dump Trailer
Specialty Trailer-Light Tower
Specialty Trailer-Message/Arrow Board
Specialty Trailer-Pole Trailer
Specialty Trailer-Portable Traffic Light
Specialty Trailer-Pothole Patcher
Specialty Trailer-Power Broom
Specialty Trailer-Traffic Monitor
Specialty Trailer-Vacuum Evacuator
Tractor Attachment-Disc Harrow
Tractor Attachment-Grading Blade

Tier	EOCP Group
1	Asphalt Distributor Truck
1	Concrete Saw-Joint Cutter
1	Overhead Trimmer Cutter
1	Power Sweeper
1	Roller-Compactor
1	Skid Steer
1	Small Work-Utility Truck
1	Specialty Trailer-Chipper
1	Stripe Remover-Grinder
1	Tractor
1	Tractor Attachment-Mower
1	Tractor Boom Mower
1	Walk Behind Striper
2	Backhoe Loader
2	Core-Drill Unit
2	Dozer
2	Dump Truck
2	Excavator
2	Heavy Work Truck-CDL
2	Herbicide Spray System
2	Lowboy-Flatbed Trailer
2	Mixer-Stabilizer
2	Motor Grader
2	Sewer Jet Truck
2	Specialty Trailer-Mud Jack
2	Street Sweeper Truck
2	Striping Truck
2	Tractor-Loader
2	Trencher
2	Wheeled Loader
3	Aerial-Platform Lift
3	Asphalt Paver
3	Bridge Inspection Trailer
3	Bridge Inspection Truck
3	Bucket Truck
3	Cold Planer
3	Crane
3	Digger Derrick
3	Directional Boring Machine
3	Pile Driver/Extractor



ATSSA Traffic Control Technician (TCT) and Supervisor (TCS)

The TCT and TCS courses are required for multiple jobs, so are introduced here. These courses are typically required in Structured Training programs for Engineering Technicians, and may be individually assigned to Engineers. Other ATSSA courses are available and may be required in Structured Training Programs.

Scheduling for all ATSSA courses is coordinated through Melissa Lee Boyd - melissa.lee@la.gov.

Rules regarding eligibility for TCT and TCS courses:

- Traffic Control Technician (TCT) is required prior to taking Traffic Control Supervisor (TCS).
- All jobs that require TCT may not require completing the TCS course.
- After completing TCT:
 - TCT course must be repeated every 4 years,
 - OR, the TCS course can be taken.
- After completing TCS:
 - TCT is no longer repeated,
 - TCS Refresher course must be taken every 4 years.

A. Refer to Structured Training Program (STP) for a job for the TCT/TCS requirements.

B. Employees who have completed TCT and not TCS will be placed in the following Curriculum.

DOTD Curriculum ATSSA TCT Traffic Control Technician

DOTD ATSSA Traffic Control Technician (TCT) Louisiana Specific - Expires 4 years

C. Employees who are required to have TCS will be placed in the following Curriculum.

DOTD Curriculum ATSSA TCS Traffic Control Supervisor – Engineering Technician 5

DOTD ATSSA Traffic Control Supervisor (TCS) Louisiana Specific

D. Employees who have completed TCS will be placed in the following Curriculum.

DOTD Curriculum ATSSA TCSR Traffic Control Supervisor Refresher

DOTD ATSSA Traffic Control Supervisor Refresher (TCSR) Louisiana Specific - Expires 4 years

E. Employees, usually Engineers, who are not in a program requiring TCT or TCS, but are assigned to or choose to take it, may be manually assigned to the appropriate curriculum as described above.

F. Employees completing the main TCS course will be given credit for the TCSR course simultaneously. This allows the Curriculum for the Refresher to be applied to the employee who will take the Refresher in 4 years and every 4 years after unless removed from the Curriculum.



Structured Training Introduction and Overview

Structured Training Programs (STPs) address more specific training requirements of certain populations of employees at DOTD. These are usually automatically assigned to employees based on their job title or their location of work. There may also be Curricula for populations who are required to retake courses that expire.

Appendices B, C, D, E, F, and I in the Workforce Development PPM 59, further define training policy for certain groups of job titles and set additional policy for personnel actions for employees in the group. For example, any program with a section name that includes the word “Fundamental” will require that program-section’s training to be complete for a Probationary employee to be eligible for Permanent Status.

The **Job Titles and DOTD Training Requirements** listing that follows indicates if a job has Structured Training and which group the title is covered under.

Training in SuccessFactors

Structured Training Programs or Curricula may be added or modified and become effective without modifications to this document. If any requirements in this catalog are in conflict with the Program or Curricula in the LMS (SuccessFactors), the SuccessFactors assignments should be followed. Any questions about training assignments should be addressed to the district training office or the section training liaison.

Substitution Credit for Required Courses

Employees with college level credit for Math and/or English may request credit for required DOTD Math and English courses. Complete the Course Substitution Request Form on the DOTD Intranet in the LTRC section.

Certain DOTD Math courses required will allow other DOTD Math courses to substitute as shown below.

Course Required	DOTD Courses that can Substitute for the Course required
DOTD STP Location & Design: Basic Math	DOTD STP Math Construction Part 1
DOTD STP Math Construction Part 1	DOTD STP Location and Design 1-Algebra
DOTD STP Math Construction Part 2	DOTD STP Location and Design 2-Geometry and Trig
DOTD STP Math Maintenance	DOTD STP Math Construction Part 1 OR DOTD STP Location and Design Basic Math

Engineering Technicians and Construction Inspectors – PPM 59, Appendix B

A detailed chapter on Engineering Technicians and their structured training follows the Job Titles list in this document. Listed below is information that pertains to all Engineering Technicians. These jobs titles are used in a multitude of settings at DOTD and so there are many structured training programs which are assigned not just on job title, but also based on organizational units or even directly to individuals.

All Engineering Techs are assigned to a Structured Training program.

All Engineering Techs are required to complete *DOTD PC Computer Program – Technicians*.

Engineering Techs 5, DCL and 7 must complete *DOTD Leadership Development Program – Technician*.

When used in the District Construction Inspection Units (2xx), the Project Analyst 1, 2, and Manager jobs will require the same Structured Training as the Engineering Technicians.



Engineering Technicians in District Construction Inspection, District Laboratory or District Training require Specialty Areas, or Authorizations or Certifications which are covered in Appendix E.

Personnel Actions and Due Date Requirements for Engineering Technicians

Eligibility for Permanent Status

See chart below for title at hiring and the program sections required within the first year, regardless of due date in the LMS, to be eligible for Permanent Status.

Job Title at Employment in Probation Status	Program – Sections Required		
	Fundamentals	ET 1	ET 2
Engineering Technician 1	for perm status		
Engineering Technician 2	for perm status		
Engineering Technician 3	for perm status	for perm status	
Engineering Technician 4 & up	for perm status	for perm status	for perm status

Job Title when Hired: Due Dates for Program-Sections

In addition to the Fundamentals section that is always due in 1 year, ETs must complete the other program sections in the time period shown below. The schedule is accelerated if the ET was first employed in an ET job title above ET 1. Failure to complete required training on this schedule may result in demotion to the job title of the highest level of training completed.

Job Title at Employment	Program-Section	Due Date
Engineering Technician 1	ET 1	2 years
Engineering Technician 2	ET 1	2 years
	ET 2	3 years
Engineering Technician 3	ET 1	1 year
	ET 2	2 years
	ET 3	3 years
Engineering Technician 4	ET 1	1 year
	ET 2	1 year
	ET 3	2 years
	ET 4	3 years
Engineering Technician 5 and above	ET 1	1 year
	ET 2	1 year
	ET 3	2 years
	ET 4	3 years
	ET 5	4 years

To be eligible to advance through Reallocation in Career Progression Group or Promotion

Engineering Technicians must have an overall training status of “In Compliance” and must have completed all courses in the assigned STP for their current job title.



Maintenance Jobs - PPM 59, Appendix C

Maintenance jobs are those in the WS pay schedule. The only exception is Bridge Inspectors who are in the TS pay schedule but work within the maintenance organization of DOTD. A chapter on Maintenance Jobs and their structured training is located later in this document. Standard safety training and courses for maintenance supervisors are assigned to jobs. Other requirements are job title and work location based.

Engineering Interns – PPM 59, Appendix D

This program is required department-wide for new Engineer Intern Applicants and Engineer Intern 1 or 2. These jobs also require the program DOTD Leadership Development Program Level 1 – Entry.

DOTD Program - Engineer Interns

Due date : 1 year. *Program must be complete to be eligible for Permanent Status.*

1.	Fundamental Training
1.01	DOTD STW The ABCs of Work Zone Personnel Safety WBT
1.02	DOTD STW Work Zone TTC Safety WBT
1.03	DOTD STW Basic Flagging Procedures
1.04	DOTD STP Standard Specifications
1.05	DOTD STP Highway Plan Reading Vol 1
1.06	DOTD STP Highway Plan Reading Vol 2

Specialty Areas, Authorizations, and Certifications – PPM 59, Appendix E

Engineering Technicians in District Construction Inspection, District Laboratory or District Training are subject to Appendix B for Engineering Technicians and also require Specialty Areas, or Authorizations or Certifications which are covered in Appendix E.

Administrative Assistants and Administrative Coordinators – PPM 59, Appendix F

In addition to one of the two programs below, these jobs also require their *DOTD PC Computer Program*.

DOTD Program - Admin Assistants and HQ Admin Coordinators

ADASST: Required for all Administrative Assistants through Administrative Assistant 5 and for all section Administrative Coordinators except those in the Operations sections 42 and 45.

Due Date: 3 years

1.	Required Courses
1.01	SCS CPTP Phone Etiquette
1.02	SCS CPTP Email Etiquette
1.03	SCS CPTP Customer Service Overview
1.04	SCS CPTP Communicating in the Command Chain
1.05	SCS CPTP Time Management
1.06	DOTD PC MS Administrative Assistant Topics for MS Word Users
1.07	DOTD LD Conflict Management
1.08	DOTD STP English Grammar



DOTD Program - Admin Coordinators in Districts and HQ Sects 42 and 45

ADCOOR: Required for all Admin Coordinators who are in the Districts or HQ Operations sections 42 and 45.
Due Date: 3 years

1.	Required Courses
1.01	SCS CPTP Phone Etiquette
1.02	SCS CPTP Email Etiquette
1.03	DOTD STP Math Maintenance
1.04	DOTD STP English Grammar

DOTD Enforcement Jobs – PPM 59, Appendix I

The DOTD Enforcement job titles are in the PS pay schedule. Their training requirements are specified in the DOTD Police General Order #320 and are tracked in a separate LMS used only by Section 52. These job titles are also required to meet any training identified in the Job Titles list.

Human Resources Professionals - PPM 59, Appendix L

Any employee with a Human Resources job title will be assigned to the program below.

DOTD Program – Human Resources Professionals

HRPROF: Required for all employees statewide who are in any Human Resources job titles.
Job codes: 170800, 170810, 170820, 170920, 170940, 170950, 170960, 170970
Due Date: 2 years

1.	DOTD Courses and web-based LaGov/CPTP Courses
1.01	DOTD HR Selecting the Best
1.02	DOTD HR LA Careers Online Hiring Center
1.03	LaGov-HCM-Basic Navigation
1.04	LaGov-HCM-Intro to Organizational Mgmt
1.05	LaGov-HCM-CATS Time Entry
1.06	LaGov-HCM-LEO Approve a Time Request
1.07	SCS CPTP State Civil Service Foundations
1.08	SCS CPTP Navigating the HR Handbook
1.09	SCS CPTP Entry Guidelines
1.10	SCS CPTP Position Descriptions
1.11	SCS CPTP Pay Mechanisms
1.12	SCS CPTP Filling Vacancies
1.13	SCS CPTP Appointments to Classified Jobs
1.14	SCS CPTP State Civil Service Classification Plan
1.15	SCS CPTP Navigating HR Portal
2.	CPTP Instructor-led Courses
2.01	SCS CPTP LA Careers
2.02	SCS CPTP Entry Guidelines and Reporting
2.03	SCS CPTP HR LASERS Agency Training



JOB TITLES and DOTD TRAINING REQUIREMENTS as of August 2025

Most job titles have either a Leadership Program assignment OR a STP assignment, but can have both.

- CS Job – job code for the title.
- Job Title – abbreviated job title. (Within Careers Groups, Titles will be ordered by Pay Grades)
- Career – Code for like types of jobs
- Grade – pay grade
- CS – Civil Service Supervisory Group. Groups are 1, 2, 3 or blank if not a supervisor.
- LD – DOTD Leadership level if any. TE=Technician, P1=Entry, P2=Staff, P3=Manager, P4=Administrator
- PC – DOTD PC Computer program if any. A=Admin Coor/Asst, T=Technicians
- Structured Training (STP) – section where additional training requirements for the job title can be found.

Classified Job Titles

Any **highlighted items** are currently undergoing changes.

CS Job	Job Title	Career	GRADE	CS	LD	PC	Structured Training (STP)
160180	ACCOUNTANT 1	2101	AS614		P1		
139350	ACCOUNTANT 2	2101	AS615		P1		
139370	ACCOUNTANT 3	2101	AS617		P2		
171400	ACCOUNTANT 4	2101	AS619		P2		
159710	ACCOUNTANT MANAGER 1	2101	AS620	1	P3		
159720	ACCOUNTANT MANAGER 2	2101	AS621	2	P3		
159730	ACCOUNTANT MANAGER 3	2101	AS623	2	P3		
159740	ACCOUNTANT MANAGER 4	2101	AS624	2	P3		
159790	ACCOUNTANT ADMIN 5	2101	AS626	3	P4		
136950	ACCOUNTING SPECIALIST 1	1101	AS609				
140470	ACCOUNTING SPECIALIST 2	1101	AS610				
139340	ACCOUNTING TECHNICIAN	1101	AS612				
159590	ACCOUNTING SPEC SUPV	1101	AS614	1			
168090	ADM PROG SPECIALIST-A	9221	AS613		P1		
168100	ADM PROG SPECIALIST-B	9221	AS614		P2		
168110	ADM PROG SPECIALIST-C	9221	AS615		P2		
170680	ADM PROG MGR 1	9221	AS614	1	P3		
170690	ADM PROG MGR 2	9221	AS615	1	P3		
170700	ADM PROG MGR 3	9221	AS617	1	P3		
170640	ADM PROG DIR 1	9221	AS616	1	P3		
170650	ADM PROG DIR 2	9221	AS618	2	P3		
170660	ADM PROG DIR 3	9221	AS620	2	P3		
170670	ADM PROG DIR 4	9221	AS622	3	P3		
168000	ADMIN ASSISTANT 1	1102	AS605			A	Admin Assistant/Coordinator
168010	ADMIN ASSISTANT 2	1102	AS607			A	Admin Assistant/Coordinator
168020	ADMIN ASSISTANT 3	1102	AS609			A	Admin Assistant/Coordinator
168030	ADMIN ASSISTANT 4	1102	AS611			A	Admin Assistant/Coordinator
168080	ADMIN ASSISTANT 5	1102	AS613			A	Admin Assistant/Coordinator
171200	ADMIN ASSISTANT 6	1102	AS614			A	none

DOTD Training Requirements Catalog



CS Job	Job Title	Career	GRADE	CS	LD	PC	Structured Training (STP)
168040	ADMIN COORDINATOR 1	1101	AS605			A	Admin Assistant/Coordinator
168050	ADMIN COORDINATOR 2	1101	AS607			A	Admin Assistant/Coordinator
168060	ADMIN COORDINATOR 3	1101	AS609			A	Admin Assistant/Coordinator
168070	ADMIN COORDINATOR 4	1101	AS611			A	Admin Assistant/Coordinator
167340	ADMIN SUPERVISOR 1	1101	AS609	1		A	
167350	ADMIN SUPERVISOR 2	1101	AS611	1		A	
159920	AIRCRAFT PILOT 2	8401	WS219				
159930	AIRCRAFT FLEET CHF PILOT	8401	WS221				
159940	AIRCRAFT FLEET COMD PILOT	8401	WS222				
160580	ATTORNEY 1	3101	AS617		P1		
160590	ATTORNEY 2	3101	AS618		P1		
160600	ATTORNEY 3	3101	AS620		P2		
171470	ATTORNEY 4	3101	AS621		P2		
160610	ATTORNEY SUPERVISOR	3101	AS622	1	P3		
171480	ATTY--DEP GEN COUNSEL 1	3101	AS623	1	P3		
171490	ATTY--DEP GEN COUNSEL 2	3101	AS624	1	P3		
171520	ATTY--GENERAL COUNSEL 3	3101	AS626	3	P4		
158520	AUDITOR 1	2101	AS614		P1		
158530	AUDITOR 2	2101	AS615		P1		
158540	AUDITOR 3	2101	AS617		P2		
171420	AUDITOR 4	2101	AS618		P2		
158550	AUDITOR SUPERVISOR	2101	AS619	1	P3		
161750	AUDITOR-INTERNAL	2101	AS621		P2		
158560	AUDIT MANAGER	2101	AS621	2	P3		
171410	AUDIT DIRECTOR 3	2101	AS624	2	P4		
173760	BRIDGE INSPECTOR 1	7305	TS306			T	Maintenance-Bridge Inspection
173770	BRIDGE INSPECTOR 2	7305	TS308			T	Maintenance-Bridge Inspection
173780	BRIDGE INSPECTOR 3	7305	TS309			T	Maintenance-Bridge Inspection
173790	BRIDGE INSPECTOR 4	7305	TS312			T	Maintenance-Bridge Inspection
173800	BRIDGE INSPECTOR 5	7305	TS315			T	Maintenance-Bridge Inspection
128760	BRIDGE-LOCK OPERATOR 1	8308	WS209				Maintenance-Bridge-Lock
128680	BRIDGE-LOCK OPERATOR 2	8308	WS210				Maintenance-Bridge-Lock
139690	BUDGET ANALYST 1	2101	AS612		P1		
139700	BUDGET ANALYST 2	2101	AS613		P2		
139730	BUDGET ANALYST 3	2101	AS615		P2		
171430	BUDGET ANALYST 4	2101	AS618		P2		
139770	BUDGET MANAGER	2101	AS618	1	P3		
139790	BUDGET ADMINISTRATOR 1	2101	AS620	1	P3		
150880	BUDGET ADMINISTRATOR 2	2101	AS622	2	P3		
165690	BUDGET ADMINISTRATOR 3	2101	AS624	2	P4		
173480	BUSINESS ANALYTICS SPEC	3501	AS620		P2		
175420	BUSINESS TECH SPEC 1	3501	TS314		P2		

DOTD Training Requirements Catalog



CS Job	Job Title	Career	GRADE	CS	LD	PC	Structured Training (STP)
175430	BUSINESS TECH SPEC 2	3501	TS315		P2		
175440	BUSINESS TECH SUPERVISOR	3501	TS316	1	P3		
128700	CARPENTER	8312	WS212				Maintenance-Trades
128740	CARPENTER MASTER	8312	WS213				Maintenance-Trades
128710	CARPENTER FOREMAN	8312	WS215	1			Maintenance-Trades
170980	COMPLIANCE INSPECTOR 1	9223	AS609				
170990	COMPLIANCE INSPECTOR 2	9223	AS611				
171000	COMPLIANCE INSPECTOR 3	9223	AS613				
171010	COMPLIANCE INVESTIGATOR 1	9223	AS612				
171020	COMPLIANCE INVESTIGATOR 2	9223	AS614				
171030	COMPLIANCE INVESTIGATOR 3	9223	AS616				
172060	COMPLIANCE INVESTIGATOR 4	9223	AS618				
158590	COMPLIANCE PROG SPEC 1	3402	AS611		P1		
158600	COMPLIANCE PROG SPEC 2	3402	AS612		P1		
158610	COMPLIANCE PROG SPEC 3	3402	AS614		P2		
158620	COMPLIANCE PROG SPEC 4	3402	AS616		P3		
176520	CONSTRUCTION INSPECTOR 1	7305	TS305			T	Engineering Technicians
176521	CONSTRUCTION INSPECTOR 2	7305	TS307			T	Engineering Technicians
176522	CONSTRUCTION INSPECTOR 3	7305	TS309			T	Engineering Technicians
176523	CONSTRUCTION INSPECTOR 4	7305	TS311			T	Engineering Technicians
176524	CONSTRUCTION INSPECTOR 5	7305	TS313		TE	T	Engineering Technicians
176525	CONSTRUCTION INSPECTOR SUP	7305	TS315	1	TE	T	Engineering Technicians
160200	CONTRACT/GRANT REVIEW 1	4104	AS611		P1		
160210	CONTRACT/GRANT REVIEW 2	4104	AS612		P1		
166140	CONTRACT/GRANT REVIEW 3	4104	AS614		P2		
166150	CONTRACT/GRANT REVIEW 4	4104	AS615		P2		
160220	CONTRACT/GRANT REVIEW SUP	4104	AS617	1	P3		
160230	CONTRACT/GRANT REVIEW MGR	4104	AS619	1	P3		
100300	CUSTODIAN 1	8103	WS202				
100270	CUSTODIAN 2	8103	WS203				
175910	CUSTODIAN 3	8103	WS205				
175920	CUSTODIAN SUPERVISOR A	8103	WS207	1			
119660	DEPUTY ASST SECRETARY 3	9230	AS626	3	P4		
119690	DEPUTY UNDERSECRETARY 3	9230	AS627	3	P4		
151980	DISTRICT SIGN SPEC 1	8314	WS210				Maintenance-District Sign Spec
151990	DISTRICT SIGN SPEC 2	8314	WS212				Maintenance-District Sign Spec
173370	DISTRICT SIGN SPEC LEADER	8314	WS214				Maintenance-District Sign Spec
162790	DOTD DEPUTY CHIEF ENGR	7101	TS324	3	P4		
109260	DOTD CHIEF ENGINEER	7101	TS325	3	P4		
175830	DOTD ENFORCE CADET	9279	PS108				
175840	DOTD ENFORCE AGENT	9279	PS110				DOTD Police General Order #320
175850	DOTD ENFORCE SENIOR AGENT	9279	PS111				DOTD Police General Order #320

DOTD Training Requirements Catalog



CS Job	Job Title	Career	GRADE	CS	LD	PC	Structured Training (STP)
176504	DOTD ENFORCE CORPORAL	9279	PS112				DOTD Police General Order #320
175860	DOTD ENFORCE SERGEANT	9279	PS113	1			DOTD Police General Order #320
175870	DOTD ENFORCE LIEUTENANT	9279	PS115	1			DOTD Police General Order #320
175880	DOTD ENFORCE CAPTAIN	9279	PS117	2			DOTD Police General Order #320
175890	DOTD ENFORCE MAJOR	9279	PS119	2			DOTD Police General Order #320
175900	DOTD ENFORCE ADMIN	9279	PS121	3			DOTD Police General Order #320
172450	DOTD PROGRAM SPECIALIST 1	4103	AS612		P1		
172460	DOTD PROGRAM SPECIALIST 2	4103	AS613		P1		
172470	DOTD PROGRAM SPECIALIST 3	4103	AS615		P2		
172480	DOTD PROGRAM SPECIALIST 4	4103	AS617		P2		
172490	DOTD PROGRAM SPECIALIST 5	4103	AS619		P2		
172500	DOTD PROGRAM SUPERVISOR	4103	AS619	1	P3		
172510	DOTD PROGRAM MANAGER	4103	AS620	2	P3		
172520	DOTD PROGRAM DIRECTOR	4103	AS622	3	P4		
167540	ECONOMIST 1	4102	AS618		P1		
167550	ECONOMIST 2	4102	AS619		P2		
128770	ELECTRICIAN	8309	WS212				Maintenance-Trades
155150	ELECTRICIAN SPECIALIST	8309	WS213				Maintenance-Trades
155140	ELECTRICIAN SPEC LEADER	8309	WS215				Maintenance-Trades
155130	ELECTRICIAN SPEC FOREMAN	8309	WS216	1			Maintenance-Trades
132990	ELECTRONIC TECH TRAINEE	8602	WS213				Maintenance-Trades
131740	ELECTRONIC TECH	8602	WS215				Maintenance-Trades
156750	ELECTRONIC TECH ADV	8602	WS216				Maintenance-Trades
131750	ELECTRONIC TECH SUPV	8602	WS218	1			Maintenance-Trades
109160	ENGINEER INTERN APPL	7101	TS312		P1		Engineer Interns
107680	ENGINEER INTERN 1	7101	TS312		P1		Engineer Interns
107690	ENGINEER INTERN 2	7101	TS313		P1		Engineer Interns
109140	ENGINEER 3	7101	TS314		P2		
109150	ENGINEER 4	7101	TS316		P2		
165520	ENGINEER 5	7101	TS317		P2		
165490	ENGINEER 6 DCL	7101	TS319		P2		
165530	ENGINEER 6	7101	TS319	1	P3		
109340	ENGINEER 7	7101	TS320	2	P3		
109100	ENGINEER 8	7101	TS322	3	P4		
171280	ENGINEER 9	7101	TS323	3	P4		
161000	ENGR TECHNICIAN 1	7305	TS304			T	Engineering Technicians
161010	ENGR TECHNICIAN 2	7305	TS306			T	Engineering Technicians
161240	ENGR TECHNICIAN 3	7305	TS308			T	Engineering Technicians
161250	ENGR TECHNICIAN 4	7305	TS310			T	Engineering Technicians
166230	ENGR TECHNICIAN 5	7305	TS312		TE	T	Engineering Technicians
166260	ENGR TECHNICIAN DCL CONSULT	7305	TS313		TE	T	Engineering Technicians
166250	ENGR TECHNICIAN 7-SUP	7305	TS314	1	TE	T	Engineering Technicians

DOTD Training Requirements Catalog



CS Job	Job Title	Career	GRADE	CS	LD	PC	Structured Training (STP)
141060	ENV IMPACT SPEC 1	7303	TS308		P1		
141050	ENV IMPACT SPEC 2	7303	TS309		P2		
141740	ENV IMPACT SPEC 3	7303	TS311		P2		
167000	ENV IMPACT SPEC - DCL	7303	TS314		P2		
141030	ENV IMPACT MANAGER 1	7303	TS314	1	P3		
141750	ENV IMPACT MANAGER 2	7303	TS316	1	P3		
128800	EQUIPMENT INSPECTOR	8404	WS214				Maintenance-Equipment
128810	EQUIP SUPERINTENDENT	8404	WS218	2			Maintenance-Equipment
169850	FACIL PROJ PLAN 2	7201	TS312		P1		
169860	FACIL PROJ PLAN 3	7201	TS314		P2		
169870	FACIL PROJ SUPERVISOR	7201	TS316	1	P3		
170000	FACIL PROJ ADMINISTRATOR	7201	TS318	2	P3		
172280	FACILITY ASST MAINT MGR B	8345	WS218	1			
172240	FACILITY MAINT MGR A	8345	WS219	2			
172250	FACILITY MAINT MGR B	8345	WS220	2			
174200	FERRYBOAT DECKHAND 1	8422	WS209				Maintenance-Ferryboat
174210	FERRYBOAT DECKHAND 2	8422	WS210				Maintenance-Ferryboat
174220	FERRYBOAT DECKHAND 3	8422	WS212				Maintenance-Ferryboat
174230	FERRYBOAT OPERATOR 1	8422	WS213				Maintenance-Ferryboat
174240	FERRYBOAT OPERATOR 2	8422	WS215				Maintenance-Ferryboat
174250	FERRYBOAT OPERATOR 3	8422	WS217				Maintenance-Ferryboat
174260	FERRYBOAT OPERATOR SENIOR	8422	WS219				Maintenance-Ferryboat
174270	FERRYBOAT OPERATION SUPER	8422	WS220	1			Maintenance-Ferryboat
174280	FERRYBOAT OPERATION MGR A	8422	WS221	2			Maintenance-Ferryboat
174290	FERRYBOAT OPERATION MGR B	8422	WS222	2			Maintenance-Ferryboat
173530	GIS ANALYST 1	7103	TS308		P1		
173540	GIS ANALYST 2	7103	TS309		P2		
173550	GIS ANALYST 3	7103	TS312		P2		
173560	GIS SPECIALIST	7103	TS314		P2		
173570	GIS SUPERVISOR	7103	TS315	1	P3		
173580	GIS MANAGER	7103	TS316	2	P3		
131930	GUARD	6507	PS104				Maintenance-Trades
128940	HIGHWAY FOREMAN 1	8314	WS215	1			Maintenance-Hwy Foreman 1
128950	HIGHWAY FOREMAN 2	8314	WS216	1			Maintenance-Hwy Foreman 2
170800	HUMAN RES ANALYST A	3401	AS612		P1		Human Resources Professionals
170810	HUMAN RES ANALYST B	3401	AS613		P1		Human Resources Professionals
170820	HUMAN RES ANALYST C	3401	AS615		P2		Human Resources Professionals
170960	HUMAN RES SPECIALIST	3401	AS617		P2		Human Resources Professionals
170970	HUMAN RES SUPERVISOR	3401	AS618	1	P3		Human Resources Professionals
170940	HUMAN RES MANAGER A	3401	AS619	2	P3		Human Resources Professionals
170950	HUMAN RES MANAGER B	3401	AS620	2	P3		Human Resources Professionals
170920	HUMAN RES DIRECTOR D	3401	AS623	3	P4		Human Resources Professionals

DOTD Training Requirements Catalog



CS Job	Job Title	Career	GRADE	CS	LD	PC	Structured Training (STP)
160670	HWY SIGN/PAVE MARK SUPV	7305	WS217	1			Maintenance-Hwy Sign/Pave Mk
175470	IT TECH SUPPORT ANALYST 3	3501	TS313		P2		
175480	IT TECH SPECIALIST 1	3501	TS314		P2		
175490	IT TECH SPECIALIST 2	3501	TS315		P2		
175590	IT SUPERVISOR	3501	TS316	1	P3		
173680	ITS TECHNICIAN 1	8602	WS215				Maintenance-ITS Techs
173690	ITS TECHNICIAN 2	8602	WS216				Maintenance-ITS Techs
173700	ITS TECHNICIAN 3	8602	WS218				Maintenance-ITS Techs
173710	ITS TECHNICIAN SPECIALIST	8602	WS219				Maintenance-ITS Techs
173720	ITS TECHNICIAN SUPERVISOR	8602	WS220	1			Maintenance-ITS Techs
173730	ITS TECHNICIAN MANAGER	8602	WS221	2			Maintenance-ITS Techs
176526	LAND TECHNICIAN 1	7306	TS305				ETs: Dist Survey, Sect 30
176400	LAND TECHNICIAN 2	7306	TS307				ETs: Dist Survey, Sect 30
176410	LAND TECHNICIAN 3	7306	TS308				ETs: Dist Survey, Sect 30
176420	LAND TECHNICIAN 4	7306	TS310				ETs: Dist Survey, Sect 30
128650	MAINTENANCE REPAIRER 1	8314	WS210				Maintenance-Trades
128640	MAINTENANCE REPAIRER 2	8314	WS212				Maintenance-Trades
128630	MAINTENANCE REPR MASTER	8314	WS213				Maintenance-Trades
129230	MAINTENANCE FOREMAN	8314	WS215	1			Maintenance-Trades
172300	MAINTENANCE SUPERINTENDENT	8345	WS217	1			Maintenance-Trades
125850	MANAGEMENT ANALYST 1	4103	AS612		P1		
125860	MANAGEMENT ANALYST 2	4103	AS614		P2		
103420	MECHANIC-BODY REPAIRER 1	8403	WS212				Maintenance-Mechanics
103430	MECHANIC-BODY REPAIRER 2	8403	WS214				Maintenance-Mechanics
103360	MECHANIC 1	8404	WS210				Maintenance-Mechanics
103390	MECHANIC 2	8404	WS212				Maintenance-Mechanics
103370	MECHANIC 3	8404	WS213				Maintenance-Mechanics
103380	MECHANIC 4	8404	WS214				Maintenance-Mechanics
103400	MECHANIC SUPERVISOR A	8404	WS215	1			Maintenance-Mechanics
103410	MECHANIC SUPERVISOR B	8404	WS217	1			Maintenance-Mechanics
103460	MOB EQUIP OPER 1	8314	WS209				Maintenance-Mobile Equip Oper
103440	MOB EQUIP OPER 2	8314	WS210				Maintenance-Mobile Equip Oper
102860	MOB EQUIP OPER HEAVY 1	8314	WS213				Maintenance-Mobile Equip Oper
102890	MOB EQUIP OPER HEAVY 2	8314	WS214				Maintenance-Mobile Equip Oper
129430	OPERATING ENGINEER 1	8326	WS211				
129440	OPERATING ENGINEER 2	8326	WS212				
129420	OPERATING ENG MASTER	8326	WS213				
129410	OPERATING ENG FORE 2	8326	WS215	1			
130200	PAINTER	8327	WS212				Maintenance-Trades
130210	PAINTER MASTER	8327	WS213				Maintenance-Trades
129450	PAINTER FOREMAN	8327	WS215	1			Maintenance-Trades
165640	PARALEGAL 1	9219	AS612				

DOTD Training Requirements Catalog



CS Job	Job Title	Career	GRADE	CS	LD	PC	Structured Training (STP)
113470	PARALEGAL 2	9219	AS614				
134120	PARISH HWY MAIN SUPT	8314	WS217	1			Maintenance-Parish Hwy Maint
129500	PLUMBER/PIPEFITTER	8315	WS212				Maintenance-Trades
146330	PLUMBER/PIPEFIT MASTER	8315	WS213				Maintenance-Trades
126260	POLICY PLANNER 1	4103	AS613		P1		
126270	POLICY PLANNER 2	4103	AS615		P2		
126280	POLICY PLANNER 3	4103	AS617		P2		
126250	POLICY PLANNER 4	4103	AS619		P3		
171160	PRINTING OPERATOR 1	8503	WS210				
171170	PRINTING OPERATOR 2	8503	WS212				
171180	PRINTING MASTER OPERATOR	8503	WS213				
171190	PRINTING SUPERVISOR	8503	WS215	1			
103810	PRINTING SUPERINTENDENT	8503	WS219	1			
174120	PROCUREMENT ANALYST 1	1201	AS612		P1		
174130	PROCUREMENT ANALYST 2	1201	AS613		P2		
174140	PROCUREMENT ANALYST 3	1201	AS615		P2		
174150	PROCUREMENT SPECIALIST	1201	AS616		P2		
174160	PROCUREMENT SUPERVISOR	1201	AS617	1	P3		
174170	PROCUREMENT PGM MANAGER	1201	AS618	1	P3		
174180	PROCUREMENT MANAGER	1201	AS620	2	P3		
174190	PROCUREMENT DIRECTOR	1201	AS622	3	P4		
116690	PROFESSIONAL CHEMIST 1	5614	TS308		P1		
116700	PROFESSIONAL CHEMIST 2	5614	TS309		P1		
116710	PROFESSIONAL CHEMIST 3	5614	TS311		P2		
171870	PROJECT ANALYST 1	7102	TS310		P1		Dist-Units 2xx see District ETs.
171880	PROJECT ANALYST 2	7102	TS311		P2		Dist-Units 2xx see District ETs.
171890	PROJECT MANAGER	7102	TS313		P2		Dist-Units 2xx see District ETs.
164820	PUBLIC INFO OFFICER 1	4203	AS611		P1		
164830	PUBLIC INFO OFFICER 2	4203	AS613		P1		
164840	PUBLIC INFO OFFICER 3	4203	AS615		P2		
164850	PUBLIC INFO DIRECTOR 1	4203	AS618	1	P3		
164860	PUBLIC INFO DIRECTOR 2	4203	AS619	1	P3		
164870	PUBLIC INFO DIRECTOR 3	4203	AS621	1	P3		
167110	R/W AGENT 1	2308	AS612		P1		
167120	R/W AGENT 2	2308	AS613		P1		
167130	R/W AGENT 3	2308	AS615		P2		
167140	R/W AGENT 4	2308	AS617		P2		
168780	R/W APPRAISER 1	2308	AS613		P1		
168790	R/W APPRAISER 2	2308	AS614		P1		
168800	R/W APPRAISER 3	2308	AS616		P2		
168810	R/W APPRAISER 4	2308	AS617		P2		
167150	R/W PROGRAM SPECIALIST	2308	AS619	1	P3		

DOTD Training Requirements Catalog



CS Job	Job Title	Career	GRADE	CS	LD	PC	Structured Training (STP)
167160	R/W SUPERVISOR	2308	AS620	1	P3		
167170	R/W MANAGER	2308	AS622	2	P3		
167180	R/W ADMINISTRATOR	2308	AS624	3	P4		
155460	ROADSIDE DEV HERB APP	8314	WS214				Maintenance-Roadside Devel
152580	ROADSIDE DEV DIST COOR TR	7307	WS217		P1		Maintenance-Roadside Devel
108620	ROADSIDE DEV DIST COORD	7307	WS218	1	P2		Maintenance-Roadside Devel
108610	ROADSIDE DEV MANAGER	7307	WS219	1	P3		
129740	SHEET METAL WORKER	8334	WS212				Maintenance-Sheet Metal
146840	SHEET METAL MASTER	8334	WS213				Maintenance-Sheet Metal
129730	SHEET METAL FOREMAN	8334	WS215	1			Maintenance-Sheet Metal
173460	STATEWIDE PROGRAM MGR 1	9240	AS622	1	P3		
173470	STATEWIDE PROGRAM MGR 2	9240	AS624	2	P3		
151960	SURVEYOR 1 - INTERN	7306	TS312		P1		
158190	SURVEYOR 2 - INTERN	7306	TS313		P1		
141370	SURVEYOR 3	7306	TS314		P2		
166220	SURVEYOR 4	7306	TS316		P2		
173990	SURVEYOR 5	7306	TS317		P2		
107920	SURVEYOR SUPERVISOR	7306	TS318	1	P3		
165760	SURVEYOR MANAGER	7306	TS320	2	P3		
165750	SURVEYOR ADMINISTR-DOTD	7306	TS322	3	P4		
129810	TRADE APPRENTICE	8ttt314	WS209				Maintenance-Trades
133350	TRANS PERMITS MANAGER	6510	AS617	2	P3		
164700	TRANS PERMITS SPEC 1	6510	AS607				
164690	TRANS PERMITS SPEC 2	6510	AS609				
164710	TRANS PERMITS SPEC 3	6510	AS610				
133550	TRANS PERMITS SUPV 1	6510	AS613	1	P3		
133560	TRANS PERMITS SUPV 2	6510	AS615	1	P3		
160680	TRANSPORTATION OPS MGR	7305	WS219	2			Maintenance-Transport Ops Mgr
129830	WELDER	8337	WS212				Maintenance-Trades
129850	WELDER MASTER	8337	WS213				Maintenance-Trades
129840	WELDER FOREMAN	8337	WS215	1			Maintenance-Trades



Unclassified Job Titles

RS 42:289 E. "Unclassified employee" means any person holding an office or position of trust or employment in the state service, whether elective or appointive, who is not in the classified civil service of the state under the provisions of Section 2 of Article X of the Louisiana Constitution, excluding bona fide students employed by the educational institution in which they are enrolled as students.

See the section on State and Agency Mandated Training for the training requirements of unclassified employees at DOTD. The Civil Service Supervisory Group requirements do not pertain to unclassified employees.

CS Job	Job Title
501510	ASST SECRETARY (UNCL)
501730	ASST TO SEC FOR POLICY
502260	CHIEF OF STAFF
502530	CONFIDENTIAL ASST (UNC)
509400	COORDINATOR
503040	DEPUTY SECRETARY (UNCL)
503850	DIR EMER SERVICES
506600	DOTD SECRETARY (UNCL)
506980	EMERGENCY SERV COORD
504180	EXEC DIRECTOR/SRA (UNC)
504160	EXEC SECRETARY (UNCL)
504170	EXECUTIVE COUNSEL
505080	LIAISON OFFICER
505960	PLANNER
506710	SPECIAL ASSISTANT
507680	SPECIAL PROJ OFF
507540	UNDERSECRETARY (UNCL)
800010	NON-STATE EMPLOYEE-ERP



STRUCTURED TRAINING for ENGINEERING TECHNICIANS

All Engineering Technicians require the following basic training in their STP.

Basic Courses in all Engineering Technician Programs

Fundamental Training
DOTD STP Standard Specifications
DOTD STP Math Location and Design Basic Math OR DOTD STP Math Construction Part 1
Other Required Training
DOTD STP Highway Plan Reading Vol 1
DOTD STP Highway Plan Reading Vol 2
DOTD STP English Grammar
DOTD STP Math Location and Design 1-Algebra OR DOTD STP Math Construction Part 2
DOTD STP Math Location and Design 2-Geometry and Trig OR no additional math

Section Engineering Technicians

All information contained in the main part of this Catalog also applies.

This catalog component is organized by Office and then Section.

Office of Engineering – Sections 19, 22, 23, 24, 25, 27, 28, 30, 33, 35, 36, 40, 64, 67, 80

Office of Operations – Sections 42, 45, 51

Office of Planning – Sections 21, 82, 85

New Sections, or sections not listed above who have Engineering Technician positions, should contact LTRC about developing a program for their section’s Engineering Technicians.

Requirements

- Each Section will have their own program or programs.
- Each program will include the basic program required courses for Engineering Technicians, with either Construction Math or Location and Design Math.
- Each program will include a “Fundamental Training” section with at least Standard Specifications and the first Math in the math series for the program.
- Fundamental Training must be completed for an employee to be eligible for permanent status.
- See Structured Training Introduction and Overview earlier in the catalog for other information regarding eligibility for permanent status and training needed for advancement for Engineering Technicians. Some required by dates may be earlier than indicated in the programs.



Office of Engineering - Section 19

All of Section 19 is required to have:

- DOTD LP Hazardous Materials Full Course
- DOTD LP Hazardous Materials Annual Refresher WBT - Expires 1 year.

All Engineering Technician Job titles in Organization Units in Section 19.

19LABS: 50018527, 50020127, 50020128, 50020129, 50020131, 50020132, 50020133, 50020135, 50020136

DOTD Program ET-STP Section 19 - LTRC Labs

1.	Safety Training	Due Date: 13 weeks
1.01	DOTD STM Handling Hazardous Chemicals WBT	
1.02	DOTD STL Lab Safety Guidelines Section 19	
1.03	DOTD LP Power/Hand Tool Safety WBT	
1.04	DOTD LP Safe Driving WBT	
1.05	DOTD STEq Fork Lift Safety WBT	
1.06	DOTD STW Work Zone TTC Safety WBT	
1.07	DOTD STW The ABCs of Work Zone Personnel Safety WBT	
2.	Fundamental Training	Due Date: 39 weeks
2.01	DOTD STP Math Construction Part 1	
2.02	DOTD STP Standard Specifications	
2.03	DOTD STW Basic Flagging Procedures	
3.	Engineering Technician 1	Due Date: 52 weeks
3.01	DOTD STL PE – Sect Lab Engr Tech 1 : 8 Perf Evals	
3.02	DOTD STP Highway Plan Reading Vol 1	
3.03	DOTD STP Highway Plan Reading Vol 2	
3.04	DOTD STW Maintenance Traffic Control	
4.	Engineering Technician 2	Due Date: 52 weeks
4.01	DOTD STL PE – Sect Lab Engr Tech 2 : 8 Perf Evals	
4.02	DOTD STP Math Construction Part 2	
5.	Engineering Technician 3	Due Date: 52 weeks
5.01	DOTD STL PE – Sect Lab Engr Tech 3 : 8 Perf Evals	
5.02	DOTD STP English Grammar	
6.	Engineering Technician 4	Due Date: 52 weeks
6.01	DOTD STL PE – Sect Lab Engr Tech 4 : 8 Perf Evals	

DOTD Curriculum STW Flagging Refresher

DOTD STW Basic Flagging Refresher WBT - Expires 4 years



Office of Engineering - Section 22

All of Section 22 is required to have:

- DOTD LP Hazardous Materials Full Course
- DOTD LP Hazardous Materials Annual Refresher WBT - Expires 1 year.

All Engineering Technician Job titles in Organization Units in Section 22, except unit 22-014.

22MATT: (22BASE) 50018561, 50021851, 50021855, 50021859, 50021860 (22FOUN), 50021862, 50021863, 50021864, 50021865, 50021870, 50384551, (but not 50021861 in 22-014)

DOTD Program ET-STP Section 22 - Materials Lab

1.	Fundamental Training	Due Date: 52 weeks
1.01	DOTD STP Math Construction Part 1	
1.02	DOTD STP Standard Specifications	
2.	Engineering Technician 1	Due Date: 52 weeks
2.01	DOTD STL PE – Sect Lab Engr Tech 1 : 8 Perf Evals	
2.02	DOTD STP Highway Plan Reading Vol 1	
2.03	DOTD STP English Grammar	
3.	Engineering Technician 2	Due Date: 52 weeks
3.01	DOTD STL PE – Sect Lab Engr Tech 2 : 8 Perf Evals	
3.02	DOTD STP Highway Plan Reading Vol 2	
3.03	DOTD STP Math Construction Part 2	
3.04	DOTD STP Metric Measures	
4.	Engineering Technician 3	Due Date: 52 weeks
4.01	DOTD STL PE – Sect Lab Engr Tech 3 : 8 Perf Evals	
5.	Engineering Technician 4	Due Date: 52 weeks
5.01	DOTD STL PE – Sect Lab Engr Tech 4 : 8 Perf Evals	

All Engineering Technician Job Titles in Section 22 in Unit 22-024.

22FOUN: 50021860 - This program is in addition to the program above.

DOTD Program ET-STP Section 22 - Materials Lab Field Operations

1.	Required Courses	Due Date: 208 weeks
1.01	DOTD STM Electrical 201 - Basic Electricity	
1.02	DOTD STC Density Testing for Embankment and Base Course WBT	
1.03	DOTD NU Radiation Safety	

DOTD Curriculum NU Radiation Safety Refresher

DOTD NU Radiation Safety Refresher WBT – Expires 3 years
--



All Engineering Technicians in Section 22 in Unit 22-014.

22MTSU: 50021861

DOTD Program ET-STP Section 22 - Materials Lab Standards Unit

1.	Fundamental Training	Due Date: 52 weeks
1.01	DOTD STP Standard Specifications	
1.02	DOTD STP Math Construction Part 1	
2.	Engineering Technician 1	Due Date: 52 weeks
2.01	DOTD STP English Grammar	
2.02	DOTD STP Highway Plan Reading Vol 1	
3.	Engineering Technician 2	Due Date: 52 weeks
3.01	DOTD STP Highway Plan Reading Vol 2	
3.02	DOTD STP Math Construction Part 2	
3.03	DOTD STP Metric Measures	

Assign any CPTP courses to employees as desired.

Office of Engineering - Section 23

All Engineering Technician Job Titles in Section 23, Utilities

23UTIL: 50020156

DOTD Program ET-STP Section 23 – Right-of-Way

1.	Fundamental Training	Due Date: 52 weeks
1.01	DOTD STP Standard Specifications	
1.02	DOTD STP Math Construction Part 1	
2.	Engineering Technician 1	Due Date: 52 weeks
2.01	DOTD STP Highway Plan Reading Vol 1	
2.03	DOTD STC Surveying Introduction WBT	
3.	Engineering Technician 2	Due Date: 52 weeks
3.01	DOTD STP English Grammar	
3.02	DOTD STP Math Construction Part 2	
3.03	DOTD STP Highway Plan Reading Vol 2	



Office of Engineering - Section 24

All Engineering Technician Job Titles in Section 24

24ROAD: 50018534, 50024711, 50024712, 50024713, 50024714, 50024715, 50024716, 50024717, 50024718, 50024719, 50024720, 50024721, 50024722, 50024723, 50024726, 50317386, 50354659, 50398201, 50398202, 50402993, 50488337, 50488338, 50539934

DOTD Program ET-STP Section 24 – Road Design

1.	Fundamental Training	Due Date: 52 weeks
1.01	DOTD STP Standard Specifications	
1.02	DOTD STP Math Location and Design Basic Math	
2.	Engineering Technician 1	Due Date: 52 weeks
2.01	DOTD STP Highway Plan Reading Vol 1	
2.02	DOTD STP Highway Plan Reading Vol 2	
2.03	DOTD STC Surveying Introduction WBT	
3.	Engineering Technician 2	Due Date: 52 weeks
3.01	DOTD STP Math Location and Design 1-Algebra	
3.02	DOTD STD Highway Location and Design Part 1	
3.03	DOTD STD Highway Curves Part 1	
4.	Engineering Technician 3	Due Date: 104 weeks
4.01	DOTD STP Math Location and Design 2-Geometry and Trig	
4.02	DOTD STP English Grammar	
4.03	DOTD STD Highway Location and Design Part 2	
4.04	DOTD STD Highway Location and Design Part 3	
4.05	DOTD STD Highway Curves Part 2	

GIS and CADD training can be assigned to employees by their supervisor.



Office of Engineering - Section 25

All Engineering Technician Job Titles in Section 25

25BRDG: 50018535, 50019547, 50019575, 50019576, 50019577, 50019579, 50019580, 50019581, 50019582, 50019583, 50019584, 50019585, 50024939, 50024940, 50024941, 50385189, 50385190.

DOTD Program ET-STP Section 25 – Bridge Design

1.	Fundamental Training	Due Date: 52 weeks
1.01	DOTD STP Standard Specifications	
1.02	DOTD STP Math Location and Design Basic Math	
2.	Engineering Technician 1	Due Date: 52 weeks
2.01	DOTD STP Highway Plan Reading Vol 1	
2.02	DOTD STP Highway Plan Reading Vol 2	
2.03	DOTD STC Surveying Introduction WBT	
3.	Engineering Technician 2	Due Date: 52 weeks
3.01	DOTD STP Math Location and Design 1-Algebra	
3.02	DOTD STD Highway Curves Part 1	
4.	Engineering Technician 3	Due Date: 104 weeks
4.01	DOTD STP Math Location and Design 2-Geometry and Trig	
4.02	DOTD STP English Grammar	
4.03	DOTD STD Highway Curves Part 2	

GIS and CADD training can be assigned to employees by their supervisor.



Office of Engineering - Section 27

All Engineering Technicians Job Titles in Section 27

27TRAF: 50336228, 50336229, 50336230, 50336254, 50406278, 50406280, 50406283.

DOTD Program ET-STP Section 27 – Traffic Engineering

1.	Fundamental Training	Due Date: 52 weeks
1.01	DOTD STP Standard Specifications	
1.02	DOTD STP Math Location and Design Basic Math	
1.03	DOTD STW Work Zone TTC Safety WBT	
2.	Engineering Technician 1	Due Date: 52 weeks
2.01	DOTD STP Highway Plan Reading Vol 1	
2.02	DOTD STP Highway Plan Reading Vol 2	
2.03	DOTD STC Surveying Introduction WBT	
3.	Engineering Technician 2	Due Date: 52 weeks
3.01	DOTD STP Math Location and Design 1-Algebra	
3.02	DOTD STP English Grammar	
3.03	DOTD ATSSA Traffic Control Technician (TCT) Louisiana Specific - Expires 4 years	
4.	Engineering Technician 3	Due Date: 104 weeks
4.01	DOTD STP Math Location and Design 2-Geometry and Trig	
4.02	DOTD BP Tort Liability: Depositions and Employee as a Witness WBT	
4.03	DOTD ATSSA Traffic Control Design Specialist (TCDS)	

DOTD Curriculum ATSSA Traffic Control Technician

DOTD ATSSA Traffic Control Technician (TCT) Louisiana Specific - Expires 4 years
--



Office of Engineering - Section 28

All Engineering Technicians in Section 28.

28ENVI: 50018515, 50018782, 50018783, 50018784, 50356684, 50383258, 50616255

DOTD Program ET-STP Section 28 – Environmental

1.	Fundamental Training	Due Date: 52 weeks
1.01	DOTD STP Math Construction Part 1	
1.02	DOTD STP Standard Specifications	
2.	Engineering Technician 1	Due Date: 52 weeks
2.01	DOTD STP Highway Plan Reading Vol 1	
2.02	DOTD STP Highway Plan Reading Vol 2	
2.03	DOTD STC Surveying Introduction WBT	
3.	Engineering Technician 2	Due Date: 52 weeks
3.01	DOTD STP English Grammar	
3.02	DOTD STP Math Construction Part 2	
3.03	DOTD STD Highway Curves Part 1	



Office of Engineering - Section 30

GIS and CADD training can be assigned to employees by their supervisor.

All Engineering Technicians Job Titles in Section 30 – Units 003 and 004.

30BOCH: 50020660, 50020725, 50024176, 50398209

DOTD Program ET-STP Section 30 – Survey Boundary Checking

1.	Fundamental Training	Due Date: 52 weeks
1.01	DOTD STP Standard Specifications	
1.02	DOTD STP Math Location and Design Basic Math	
1.03	DOTD STC Surveying Introduction WBT	
2.	Engineering Technician 1	Due Date: 52 weeks
2.01	DOTD STP Highway Plan Reading Vol 1	
2.02	DOTD STP Highway Plan Reading Vol 2	
3.	Engineering Technician 2	Due Date: 52 weeks
3.01	DOTD STP Math Location and Design 1-Algebra	
3.02	DOTD STP English Grammar	
3.03	DOTD ATSSA Traffic Control Technician (TCT) Louisiana Specific - Expires 4 years	
4.	Engineering Technician 3	Due Date: 52 weeks
4.01	DOTD STP Math Location and Design 2-Geometry and Trig	
5.	Engineering Technician 4	Due Date: 104 weeks
5.01	DOTD STD US Land Surveys Part 1	
5.02	DOTD STD US Land Surveys Part 2	
5.03	DOTD STD Fundamentals of Law for Surveyors	
5.04	DOTD STD Highway Curves Part 1	

DOTD Curriculum ATSSA Traffic Control Technician

DOTD ATSSA Traffic Control Technician (TCT) Louisiana Specific - Expires 4 years
--



All Engineering Technicians in Section 30 – Units 005 and 006.

Titles are being converted to Land Technicians.

30LSFC: 50020726, 50496764

DOTD Program ET-STP Section 30 – Survey Field Crew

1.	Fundamental Training	Due Date: 52 weeks
1.01	DOTD STP Standard Specifications	
1.02	DOTD STP Math Location and Design Basic Math	
1.03	DOTD STC Surveying Introduction WBT	
1.04	DOTD LP Boating Safety Course WBT-External	
2.	Engineering Technician 1	Due Date: 52 weeks
2.01	DOTD STP Highway Plan Reading Vol 1	
2.02	DOTD STP Highway Plan Reading Vol 2	
3.	Engineering Technician 2	Due Date: 52 weeks
3.01	DOTD STP Math Location and Design 1-Algebra	
3.02	DOTD STP English Grammar	
3.03	DOTD ATSSA Traffic Control Technician (TCT) Louisiana Specific - Expires 4 years	
4.	Engineering Technician 3	Due Date: 52 weeks
4.01	DOTD STP Math Location and Design 2-Geometry and Trig	
4.02	DOTD STC Construction Leveling	
5.	Engineering Technician 4	Due Date: 104 weeks
5.01	DOTD STD Fundamentals of Law for Surveyors	
5.02	DOTD STD Highway Curves Part 1	

DOTD Curriculum ATSSA Traffic Control Technician

DOTD ATSSA Traffic Control Technician (TCT) Louisiana Specific - Expires 4 years
--

DOTD Safety- Boating Safety Refresher

DOTD LP Boating Safety Refresher WBT - Expires 3 years
--



Office of Engineering - Section 33

All Engineering Technicians in Section 33.

33TECH: 50020140, 50020144, 50020145

The jobs in Section 33 are filled at the DCL level.

DOTD Program ET-STP Section 33 – Concrete and Asphalt DCLs

1.	Fundamental Training	Due Date: 52 weeks
1.01	DOTD STP Standard Specifications	
1.02	DOTD STP Math Construction Part 1	
1.03	DOTD STP Math Construction Part 2	
1.04	DOTD STP Highway Plan Reading Vol 1	
1.05	DOTD STP Highway Plan Reading Vol 2	
1.06	DOTD STP English Grammar	
1.07	DOTD STW Work Zone TTC Safety WBT	
1.08	DOTD STW The ABCs of Work Zone Personnel Safety WBT	
1.09	DOTD STW Basic Flagging	
1.10	DOTD ATSSA Traffic Control Technician (TCT) Louisiana Specific - Expires 4 years	
2.	Specialty Areas and Certifications – Based on job	
2.01	Two Specialty areas and two Certifications from the list below are required. The supervisor will assign the appropriate ones based on the employee's job duties.	

DOTD Curriculum STW Flagging Refresher

DOTD STW Basic Flagging Refresher WBT - Expires 4 years

DOTD Curriculum ATSSA Traffic Control Technician

DOTD ATSSA Traffic Control Technician (TCT) Louisiana Specific - Expires 4 years
--

Assignments to Specialty Areas and Certifications are made individually based on job duties.

Specialty Areas	Certifications
DOTD-AREA Embankment and Base Course	DOTD-CERT Embankment and Base Course - expires 5 years
DOTD-AREA ACM Paving	DOTD-CERT ACM Paving - expires 5 years
DOTD-AREA ACM Plant Technician	DOTD-AUTH ACM Plant Technician
DOTD-AREA ACM Plant Inspection	DOTD-CERT ACM Plant - expires 5 years
DOTD-AREA PCC Paving	DOTD-CERT PCC Paving - expires 5 years
DOTD-AREA PCC Plant	DOTD-CERT PCC Plant - expires 5 years
DOTD-AREA Structural Concrete	DOTD-CERT Structural Concrete - expires 5 years

Lab Performance Evaluations can be assigned if needed.

- DOTD STL PE - Engr Tech 1 : Perf Evals
- DOTD STL PE - Engr Tech 2 : Perf Evals
- DOTD STL PE - Engr Tech 3 : Perf Evals
- DOTD STL PE - Engr Tech 4 : Perf Evals



Office of Engineering - Section 35

All Engineering Technicians in Section 35.

35CRTP: 50607759

DOTD Program ET-STP Section 35 – Critical Projects

1.	Fundamental Training	Due Date: 52 weeks
1.01	DOTD STP Math Location and Design Basic Math	
1.02	DOTD STP Standard Specifications	
2.	Engineering Technician 1	Due Date: 52 weeks
2.01	DOTD STP Math Location and Design 1-Algebra	
2.02	DOTD STP English Grammar	
2.03	DOTD STP Highway Plan Reading Vol 1	
3.	Engineering Technician 2	Due Date: 52 weeks
3.01	DOTD STP Math Location and Design 2-Geometry and Trig	
3.02	DOTD STP Highway Plan Reading Vol 2	

Office of Engineering - Section 36

All Engineering Technicians in Section 36

36PQNT 50647276, 50647277, 50647278

DOTD Program ET-STP Section 36 – Plan Quality and Publications

1.	Fundamental Training	Due Date: 52 weeks
1.01	DOTD STP Standard Specifications	
1.02	DOTD STP Math Construction Part 1	
2.	Engineering Technician 1	Due Date: 52 weeks
2.01	DOTD STP Highway Plan Reading Vol 1	
2.02	DOTD STP English Grammar	
3.	Engineering Technician 2	Due Date: 52 weeks
3.01	DOTD STP Highway Plan Reading Vol 2	
3.02	DOTD STP Math Construction Part 2	



Office of Engineering - Section 40

All Engineering Technicians in Section 40 except units 004 and 005.

40CONS 40ESTI-Units 001, 002, and 003: 50021837, 50021843, 50021840, 50021845

DOTD Program ET-STP Section 40 – Construction

1.	Fundamental Training	Due Date: 52 weeks
1.01	DOTD STP Standard Specifications	
1.02	DOTD STP Math Construction Part 1	
2.	Engineering Technician 1	Due Date: 52 weeks
2.01	DOTD STP Highway Plan Reading Vol 1	
2.02	DOTD STP English Grammar	
3.	Engineering Technician 2	Due Date: 52 weeks
3.01	DOTD STP Highway Plan Reading Vol 2	
3.02	DOTD STP Math Construction Part 2	

All Engineering Technicians Job Titles in Section 40 – Unit 004.

40CEST: Units 004: 50021841, 50021846, 50021847, 50021848

DOTD Program ET-STP Section 40 – Construction Estimates

1.	Fundamental Training	Due Date: 52 weeks
1.01	DOTD STP Standard Specifications	
1.02	DOTD STP Math Construction Part 1	
2.	Engineering Technician 1	Due Date: 52 weeks
2.01	DOTD STP Highway Plan Reading Vol 1	
2.02	DOTD STP English Grammar	
3.	Engineering Technician 2	Due Date: 52 weeks
3.01	DOTD STP Highway Plan Reading Vol 2	
3.02	DOTD STP Math Construction Part 2	
4.	Engineering Technician 3	Due Date: 52 weeks
4.01	DOTD STC ACM Paving Inspection Vol 1	
4.02	DOTD STC ACM Paving Inspection Vol 2	
5.	Engineering Technician 4	Due Date: 52 weeks
5.01	DOTD STC PCC Paving Introduction WBT	
5.02	DOTD STC Structural Concrete Inspection Vol 1	
5.03	DOTD STC Structural Concrete Inspection Vol 2	



All Engineering Technicians in Section 40 – Unit 005.

40CFAB-Units 005: 50021842, 50025013, 50025015

DOTD Program ET-STP Section 40 – Construction Fabrication

1.	Fundamental Training	Due Date: 52 weeks
1.01	DOTD STP Standard Specifications	
1.02	DOTD STP Math Construction Part 1	
2.	Engineering Technician 1	Due Date: 52 weeks
2.01	DOTD STP Highway Plan Reading Vol 1	
2.02	DOTD STP English Grammar	
3.	Engineering Technician 2	Due Date: 52 weeks
3.01	DOTD STP Highway Plan Reading Vol 2	
3.02	DOTD STP Math Construction Part 2	
4.	Engineering Technician 3	Due Date: 52 weeks
4.01	DOTD STC Structural Concrete Inspection Vol 1	
4.02	DOTD STC Structural Concrete Inspection Vol 2	
5.	Engineering Technician 4	Due Date: 52 weeks
5.01	DOTD STC Welding Inspection Quality Control	
5.02	DOTD STC PCC Plant Inspection	

Office of Engineering - Section 64

All Engineering Technicians in Section 64.

64DLRD: 50018599, 50018601, 50322354, 50382985, 50382987, 50382988

DOTD Program ET-STP Section 64 – Dams-Levees and Reservoir Development

1.	Fundamental Training	Due Date: 52 weeks
1.01	DOTD STP Standard Specifications	
1.02	DOTD STP Math Location and Design Basic Math	
2.	Engineering Technician 1	Due Date: 52 weeks
2.01	DOTD STP Math Location and Design 1-Algebra	
2.02	DOTD STP English Grammar	
2.03	DOTD STP Highway Plan Reading Vol 1	
3.	Engineering Technician 2	Due Date: 52 weeks
3.01	DOTD STP Math Location and Design 2-Geometry and Trig	
3.02	DOTD STP Highway Plan Reading Vol 2	



Office of Engineering - Section 67

Office of Engineering - Section 67

All Engineering Technicians in Section 67.

67BRDG: 50349627, 50349629, 50349630, 50382166, 50361174

DOTD Program ET-STP Section 67 – Pavement/Geotechnical

1.	Fundamental Training	Due Date: 52 weeks
1.01	DOTD STP Standard Specifications	
1.02	DOTD STP Math Location and Design Basic Math	
2.	Engineering Technician 1	Due Date: 52 weeks
2.01	DOTD STP Highway Plan Reading Vol 1	
2.02	DOTD STP Highway Plan Reading Vol 2	
3.	Engineering Technician 2	Due Date: 52 weeks
3.01	DOTD STP Math Location and Design 1-Algebra	
3.02	DOTD STP English Grammar	
4.	Engineering Technician 3	Due Date: 52 weeks
4.01	DOTD STP Math Location and Design 2-Geometry and Trig	

Office of Engineering - Section 80

All Engineering Technicians in Section 80.

80PROJ- 50018536, 50024942, 50018550, 50018895, 50018897, 50398080, 50398081, 50018549, 50018893, 50398082

DOTD Program ET-STP Section 80 – Contract Services

1.	Fundamental Training	Due Date: 52 weeks
1.01	DOTD STP Standard Specifications	
1.02	DOTD STP Math Location and Design Basic Math	
2.	Engineering Technician 1	Due Date: 52 weeks
2.01	DOTD STP Highway Plan Reading Vol 1	
2.02	DOTD STP Highway Plan Reading Vol 2	
3.	Engineering Technician 2	Due Date: 52 weeks
3.01	DOTD STP Math Location and Design 1-Algebra	
3.02	DOTD STP English Grammar	

Assign to individuals as desired.

DOTD NHI 134037A - Managing Highway Contract Claims



Office of Operations - Section 42

All Engineering Technicians Jobs in Section 42, Units 001-069.

42RDMU – 50018565, 50397972, 50451028, 50406580, 50018571, 50398388, 50569937, 50018574, 50400147, 50613947, 50408877

DOTD Program ET-STP Section 42 – Road Maintenance

1.	Fundamental Training	Due Date: 52 weeks
1.01	DOTD STP Math Construction Part 1	
1.02	DOTD STP Standard Specifications	
2.	Engineering Technician 1	Due Date: 52 weeks
2.01	DOTD STP English Grammar	
2.02	DOTD STP Highway Plan Reading Vol 1	
3.	Engineering Technician 2	Due Date: 52 weeks
3.01	DOTD STP Highway Plan Reading Vol 2	
3.02	DOTD STP Math Construction Part 2	
3.03	DOTD STM Maintenance Activity Guide and Manual Study Guide	
3.04	DOTD BP Tort Liability: Depositions and Employee as a Witness WBT	

Section 42 also has employees in Maintenance titles. See the Maintenance section of this manual.



Office of Operations - Section 45

All Engineering Technicians in Section 45 – Units 00x.

45TRES – 50374045, 50399401, 50400085, 50400087, 50020486, 50496304, 50496305, 50399403, 50400118, 50400119, 50400120, 50673155

DOTD Program ET-STP Section 45 – Traffic Services

1.	Fundamental Training	Due Date: 52 weeks
1.01	DOTD STP Standard Specifications	
1.02	DOTD STP Math Construction Part 1	
1.03	DOTD STW Work Zone TTC Safety WBT	
1.04	DOTD STW The ABCs of Work Zone Personnel Safety WBT	
1.05	DOTD STW Basic Flagging Procedures	
1.06	DOTD STM Handling Hazardous Chemicals WBT	
2.	Engineering Technician 1	Due Date: 52 weeks
2.01	DOTD STP English Grammar	
2.02	DOTD STP Highway Plan Reading Vol 1	
3.	Engineering Technician 2	Due Date: 52 weeks
3.01	DOTD STP Highway Plan Reading Vol 2	
3.02	DOTD STP Math Construction Part 2	
3.03	DOTD STM Maintenance Activity Guide and Manual Study Guide	
3.04	DOTD STM Tort Liability for Maintenance WBT	
3.05	DOTD BP Tort Liability: Depositions and Employee as a Witness WBT	

DOTD Curriculum STW Flagging Refresher

DOTD STW Basic Flagging Refresher WBT - Expires 4 years

Section 45 also has employees in Maintenance titles. See the Maintenance section of this manual.



Office of Operations - Section 51

All Engineering Technicians in Section 51, Unit 002.

51BIQA ET DCLs in – 50018566, 50397975, 50400092, 50400097, 5040098

DOTD Program ET-STP Section 51 – Bridge Maintenance

1.	Fundamental Training	Due Date: 52 weeks
1.01	DOTD STP Standard Specifications	
1.02	DOTD STP Math Location and Design Basic Math	
2.	Engineering Technician 1	Due Date: 52 weeks
2.01	DOTD STP Highway Plan Reading Vol 1	
2.02	DOTD STP Highway Plan Reading Vol 2	
2.03	DOTD STC Surveying Introduction WBT	
3.	Engineering Technician 2	Due Date: 52 weeks
3.01	DOTD STP Math Location and Design 1-Algebra	
3.02	DOTD STD Highway Curves Part 1	
4.	Engineering Technician 3	Due Date: 104 weeks
4.01	DOTD STP Math Location and Design 2-Geometry and Trig	
4.02	DOTD STP English Grammar	
4.03	DOTD STD Highway Curves Part 2	

Follow same training requirements as the Bridge Inspectors found under Maintenance Jobs.

161000	ENGR TECHNICIAN 1	Same as Bridge Inspector 1
161010	ENGR TECHNICIAN 2	Same as Bridge Inspector 2
161240	ENGR TECHNICIAN 3	Same as Bridge Inspector 3
161250	ENGR TECHNICIAN 4	Same as Bridge Inspector 4

Section 51 also has employees in Maintenance titles. See the Maintenance section of this manual.



Office of Planning - Section 21

All Engineering Technicians in Section 21 except Unit 003.

21DATA 21INVT - 50018513, 50418014, 50018822, 50018824

DOTD Program ET-STP Section 21 – Data Collection

1.	Fundamental Training	Due Date: 52 weeks
1.01	DOTD STP Math Construction Part 1	
1.02	DOTD STP Standard Specifications	
2.	Engineering Technician 1	Due Date: 52 weeks
2.01	DOTD STP English Grammar	
2.02	DOTD STP Highway Plan Reading Vol 1	
2.03	DOTD STC Surveying Introduction WBT	
3.	Engineering Technician 2	Due Date: 52 weeks
3.01	DOTD STP Highway Plan Reading Vol 2	
3.02	DOTD STP Math Construction Part 2	

Engineering Technicians in Section 21 Unit 003.

21U003 - 50018823, 50382953, 50382954

DOTD Program ET-STP Section 21 – Data Collection Unit 003

1.	Fundamental Training	Due Date: 52 weeks
1.01	DOTD STP Math Construction Part 1	
1.02	DOTD STP Standard Specifications	
1.03	DOTD STW Basic Flagging Procedures	
2.	Engineering Technician 1	Due Date: 52 weeks
2.01	DOTD STP English Grammar	
2.02	DOTD STP Highway Plan Reading Vol 1	
2.03	DOTD STC Surveying Introduction WBT	
2.04	DOTD STW Maintenance Traffic Control	
3.	Engineering Technician 2	Due Date: 52 weeks
3.01	DOTD STP Highway Plan Reading Vol 2	
3.02	DOTD STP Math Construction Part 2	

DOTD Curriculum STW Flagging Refresher

DOTD STW Basic Flagging Refresher WBT - Expires 4 years



Office of Planning - Section 82

All Engineering Technicians in Section 82.

82HWSA - 50332938, 50382950, 50653701

DOTD Program ET-STP Section 82 – Highway Safety

1.	Fundamental Training	Due Date: 52 weeks
1.01	DOTD STP Math Construction Part 1	
1.02	DOTD STP Standard Specifications	
1.03	DOTD STW Work Zone TTC Safety WBT	
2.	Engineering Technician 1	Due Date: 52 weeks
2.01	DOTD STP English Grammar	
2.02	DOTD STP Highway Plan Reading Vol 1	
2.03	DOTD STC Surveying Introduction WBT	
3.	Engineering Technician 2	Due Date: 52 weeks
3.01	DOTD STP Highway Plan Reading Vol 2	
3.02	DOTD STP Math Construction Part 2	
3.03	DOTD BP Tort Liability: Depositions and Employee as a Witness WBT	
3.04	DOTD STM Tort Liability for Maintenance WBT	

Office of Planning - Section 85

All Engineering Technicians in Section 85.

85GISC -50018514, 50020961, 50020962, 50023807, 50324891, 50333811

DOTD Program ET-STP Section 85 – GIS-Cartography

1.	Fundamental Training	Due Date: 52 weeks
1.01	DOTD STP Standard Specifications	
1.02	DOTD STP Math Location and Design Basic Math	
2.	Engineering Technician 1	Due Date: 52 weeks
2.01	DOTD STP Highway Plan Reading Vol 1	
2.02	DOTD STP Highway Plan Reading Vol 2	
3.	Engineering Technician 2	Due Date: 52 weeks
3.01	DOTD STP Math Location and Design 1-Algebra	
3.02	DOTD STP English Grammar	
4.	Engineering Technician 3	Due Date: 52 weeks
4.01	DOTD STP Math Location and Design 2-Geometry and Trig	

GIS and CADD training can be assigned to employees by their supervisor.



District Engineering Technicians

All information contained in the main part of this Catalog also applies.

Technicians requiring the Location and Design Math track (Units 002, 003, and 170)

DISTRICT DESIGN - CONTRACTS AND SPECS (D-CNSP)
DISTRICT DESIGN - ROAD DESIGN (D-ROAD)
DISTRICT DESIGN - SURVEY (D-SURV)
DISTRICT TRAFFIC ENGINEERING (T-TRAF)

Technicians requiring the Construction Math with Specialty Areas track (Units 15x, 2xx and Trainers)

Separate Section following this one details the programs, Specialty Areas, Authorizations and Certifications.

DISTRICT CONSTRUCTION INSPECTORS (C-INSP)
DISTRICT LABORATORY (L-DLAB)
DISTRICT OFFICE TECHNICIANS (C-INSO or L-LABO)
DISTRICT TRAINING TECHNICIANS (A-TRNG)

Technicians not in either above require Construction Math track. (Does not fit either criteria above)

DISTRICT UTILITY PERMITS (A-UTPR)
DISTRICT RAIL COORDINATOR (A-RAIL)
AREA ENGINEER ASSISTANTS (Districts 03 and 61)

At the time of this release, some Engineering Technician job titles are being converted to Construction Inspectors and some to Land Technicians.

After walkover is complete, this manual will be revised as necessary.



Districts-Location Specific Training Requirements

District Utility Permits (A:UTPR)

Org Units: as specified by districts. Predominately in units 500.

DOTD Program ET-STP District Utility Permits

1.	Safety Training	Due Date: 13 weeks
1.01	DOTD LP Electrocution Prevention WBT	
1.02	DOTD LP Heat Stress WBT	
1.03	DOTD LP Poisonous Plant Safety WBT	
1.04	DOTD LP Safe Driving WBT	
1.05	DOTD STW Work Zone TTC Safety WBT	
1.06	DOTD STW The ABCs of Work Zone Personnel Safety WBT	
1.07	DOTD STW Basic Flagging Procedures	
2.	Fundamental Training	Due Date: 39 weeks
2.01	DOTD STP Standard Specifications	
2.02	DOTD STP Math Construction Part 1	
3.	Engineering Technician 1	Due Date: 52 weeks
3.01	DOTD STP English Grammar	
3.02	DOTD STP Highway Plan Reading Vol 1	
4.	Engineering Technician 2	Due Date: 52 weeks
4.01	DOTD STP Highway Plan Reading Vol 2	
4.02	DOTD STP Math Construction Part 2	
4.03	DOTD BP Tort Liability: Depositions and Employee as a Witness WBT	
4.04	DOTD STC Surveying Introduction WBT	
4.05	DOTD STC Basic Pipe Installation	
4.06	DOTD STC Construction Leveling	
5.	Engineering Technician 3	Due Date: 52 weeks
5.01	DOTD ATSSA Traffic Control Technician (TCT) Louisiana Specific - Expires 4 years	

DOTD Curriculum STW Flagging Refresher

DOTD STW Basic Flagging Refresher WBT - Expires 4 years

ATSSA TCT and TCS:

At ET 3: DOTD ATSSA Traffic Control Technician (TCT) Louisiana Specific - Expires 4 years

At ET 5: DOTD ATSSA Traffic Control Supervisor (TCS) Louisiana Specific - Expires 4 years

Will be in appropriate curriculum:

DOTD Curriculum ATSSA Traffic Control Technician

OR **DOTD Curriculum ATSSA Traffic Control Supervisor Refresher**



District Design – Contracts and Specs (D:CNSP)

Assigned to specific organizational units in District Units 170.

DOTD Program ET-STP District Design - Contracts and Specs

1.	Safety Training	Due Date: 13 weeks
1.01	DOTD LP Electrocutation Prevention WBT	
1.02	DOTD LP Heat Stress WBT	
1.03	DOTD LP Poisonous Plant Safety WBT	
1.04	DOTD LP Safe Driving WBT	
1.05	DOTD STW Work Zone TTC Safety WBT	
2.	Fundamental Training	Due Date: 39 weeks
2.01	DOTD STP Standard Specifications	
2.02	DOTD STP Math Location and Design Basic Math	
3.	Engineering Technician 1	Due Date: 52 weeks
3.01	DOTD STP Math Location and Design 1-Algebra	
3.02	DOTD STP English Grammar	
3.03	DOTD STP Highway Plan Reading Vol 1	
4.	Engineering Technician 2	Due Date: 52 weeks
4.01	DOTD STP Math Location and Design 2-Geometry and Trig	
4.02	DOTD STP Highway Plan Reading Vol 2	
5.	Engineering Technician 3	Due Date: 52 weeks
5.01	DOTD LD Professional Writing	
5.02	DOTD STC Surveying Introduction WBT	
6.	Engineering Technician 4	Due Date: 52 weeks
6.01	DOTD STD Highway Location and Design Part 1	
6.02	DOTD STD Highway Location and Design Part 2	



District Design – Road Design (D:ROAD)

Assigned to specific organizational units in District Units 170.

50020978, 50021736, 50021416, 50495318, 50021875, 50021914, 50021525, 50021526, 50400111, 50400112, 50021412, 50021661

DOTD Program - District Design - Road Design

1.	Safety Training	Due Date: 13 weeks
1.01	DOTD LP Electrocutation Prevention WBT	
1.02	DOTD LP Heat Stress WBT	
1.03	DOTD LP Poisonous Plant Safety WBT	
1.04	DOTD LP Safe Driving WBT	
1.05	DOTD STW Work Zone TTC Safety WBT	
1.06	DOTD STW The ABCs of Work Zone Personnel Safety WBT	
1.07	DOTD STW Basic Flagging Procedures	
2.	Fundamental Training	Due Date: 39 weeks
2.01	DOTD STP Standard Specifications	
2.02	DOTD STP Math Location and Design Basic Math	
2.03	DOTD STC Surveying Introduction WBT	
3.	Engineering Technician 1	Due Date: 52 weeks
3.01	DOTD STP Math Location and Design 1-Algebra	
3.02	DOTD STP English Grammar	
3.03	DOTD STP Highway Plan Reading Vol 1	
4.	Engineering Technician 2	Due Date: 52 weeks
4.01	DOTD STP Math Location and Design 2-Geometry and Trig	
4.02	DOTD STP Highway Plan Reading Vol 2	
4.03	DOTD STD Highway Location and Design Part 1	
4.04	DOTD STD Highway Curves Part 1	
5.	Engineering Technician 3	Due Date: 52 weeks
3.01	DOTD STD Highway Location and Design Part 2	
3.02	DOTD STD Highway Curves Part 2	
3.03	DOTD ATSSA Traffic Control Technician (TCT) Louisiana Specific - Expires 4 years	
3.04	DOTD ATSSA Traffic Control Design Specialist (TCDS)	
6.	Engineering Technician 4	Due Date: 52 weeks
6.01	DOTD STD Highway Location and Design Part 3	
6.02	DOTD NHI 380032A Roadside Safety Design	

DOTD Curriculum STW Flagging Refresher

DOTD STW Basic Flagging Refresher WBT - Expires 4 years

ATSSA TCT and TCS:

At ET 3: DOTD ATSSA Traffic Control Technician (TCT) Louisiana Specific - Expires 4 years

DOTD Curriculum ATSSA Traffic Control Technician



District Design - Survey (D:SURV)

Assigned to specific organizational units in District Units 170.

Job Titles are converting to Land Technicians.

50021059, 50021058, 50399847, 50399995, 50397185, 50021668, 50399846, 50021524, 50400059

DOTD Program ET-STP District Design - Survey

1.	Safety Training	Due Date: 13 weeks
1.01	DOTD LP Electrocutation Prevention WBT	
1.02	DOTD LP Heat Stress WBT	
1.03	DOTD LP Poisonous Plant Safety WBT	
1.04	DOTD LP Safe Driving WBT	
1.05	DOTD STW Work Zone TTC Safety WBT	
1.06	DOTD STW The ABCs of Work Zone Personnel Safety WBT	
1.07	DOTD STW Basic Flagging Procedures	
2.	Fundamental Training	Due Date: 39 weeks
2.01	DOTD STP Standard Specifications	
2.02	DOTD STP Math Location and Design Basic Math	
2.03	DOTD STC Surveying Introduction WBT	
3.	Engineering Technician 1	Due Date: 52 weeks
3.01	DOTD STP Math Location and Design 1-Algebra	
3.02	DOTD STP English Grammar	
3.03	DOTD STP Highway Plan Reading Vol 1	
3.04	DOTD LP Boating Safety Course WBT-External	
4.	Engineering Technician 2	Due Date: 52 weeks
4.01	DOTD STP Math Location and Design 2-Geometry and Trig	
4.02	DOTD STP Highway Plan Reading Vol 2	
4.03	DOTD STC Construction Leveling	
5.	Engineering Technician 3	Due Date: 52 weeks
5.01	DOTD STD Highway Curves Part 1	
5.02	DOTD STV US Land Surveys Part 1	
5.03	DOTD ATSSA Traffic Control Technician (TCT) Louisiana Specific - Expires 4 years	
6.	Engineering Technician 4	Due Date: 52 weeks
6.01	DOTD STV Fundamentals of Law for Surveyors	
6.02	DOTD STV US Land Surveys Part 2	
6.03	DOTD STD Highway Curves Part 2	



DOTD Curriculum STW Flagging Refresher

DOTD STW Basic Flagging Refresher WBT - Expires 4 years

DOTD Safety- Boating Safety Refresher

DOTD LP Boating Safety Refresher WBT - Expires 3 years

ATSSA TCT and TCS:

At ET 3: *DOTD ATSSA Traffic Control Technician (TCT) Louisiana Specific - Expires 4 years*

At ET 5: *DOTD ATSSA Traffic Control Supervisor (TCS) Louisiana Specific - Expires 4 years*

Will be in appropriate curriculum:

DOTD Curriculum ATSSA Traffic Control Technician

OR ***DOTD Curriculum ATSSA Traffic Control Supervisor Refresher***

Old program D-WWDM people were placed in the DISTRICT DESIGN – SURVEY program.



District Traffic Engineering (D:TRAF)

All districts, units 002 and 003 - Based on Organizational Units

DOTD Program ET-STP District Traffic Engineering

1.	Safety Training	Due Date: 13 weeks
1.01	DOTD LP Electrocutation Prevention WBT	
1.02	DOTD LP Heat Stress WBT	
1.03	DOTD LP Poisonous Plant Safety WBT	
1.04	DOTD LP Safe Driving WBT	
1.05	DOTD STM Handling Hazardous Chemicals WBT	
1.06	DOTD STW Work Zone TTC Safety WBT	
1.07	DOTD STW The ABCs of Work Zone Personnel Safety WBT	
1.08	DOTD STW Basic Flagging Procedures	
2.	Fundamental Training	Due Date: 39 weeks
2.01	DOTD STP Standard Specifications	
2.02	DOTD STP Math Location and Design Basic Math	
3.	Engineering Technician 1	Due Date: 52 weeks
3.01	DOTD STP Math Location and Design 1-Algebra	
3.02	DOTD STP English Grammar	
3.03	DOTD STP Highway Plan Reading Vol 1	
4.	Engineering Technician 2	Due Date: 52 weeks
4.01	DOTD STP Math Location and Design 2-Geometry and Trig	
4.02	DOTD STP Highway Plan Reading Vol 2	
4.03	DOTD ATSSA Traffic Control Technician (TCT) Louisiana Specific - Expires 4 years	
5.	Engineering Technician 3	Due Date: 52 weeks
5.01	DOTD ATSSA Traffic Control Design Specialist (TCDS)	
5.02	DOTD BP Tort Liability: Depositions and Employee as a Witness WBT	
5.03	DOTD STM Tort Liability for Maintenance	

DOTD Curriculum STW Flagging Refresher

DOTD STW Basic Flagging Refresher WBT - Expires 4 years

DOTD Curriculum ATSSA Traffic Control Design Specialist

DOTD ATSSA Traffic Control Design Specialist (TCDS)

ATSSA TCT and TCS:

At ET 3: DOTD ATSSA Traffic Control Technician (TCT) Louisiana Specific - Expires 4 years

At ET 5: DOTD ATSSA Traffic Control Supervisor (TCS) Louisiana Specific - Expires 4 years

Will be in appropriate curriculum:

DOTD Curriculum ATSSA Traffic Control Technician

OR **DOTD Curriculum ATSSA Traffic Control Supervisor Refresher**



District Rail Coordinator (A:RAIL)

Manually assign.

DOTD Program ET-STP District Rail Coordinator

Due Date: 3 years

1.	Safety Training	Due Date: 13 weeks
1.01	DOTD LP Electrocutation Prevention WBT	
1.02	DOTD LP Heat Stress WBT	
1.03	DOTD LP Poisonous Plant Safety WBT	
1.04	DOTD LP Safe Driving WBT	
1.05	DOTD STM Handling Hazardous Chemicals WBT	
1.06	DOTD STW Work Zone TTC Safety WBT	
1.07	DOTD STW The ABCs of Work Zone Personnel Safety WBT	
1.08	DOTD STW Basic Flagging Procedures	
2.	Fundamental Training	Due Date: 39 weeks
2.01	DOTD STP Standard Specifications	
2.02	DOTD STP Math Construction Part 1	
3.	Engineering Technician 1	Due Date: 52 weeks
3.01	DOTD STP Highway Plan Reading Vol 1	
3.02	DOTD STP English Grammar	
4.	Engineering Technician 2	Due Date: 52 weeks
4.01	DOTD STP Highway Plan Reading Vol 2	
4.02	DOTD STP Math Construction Part 2	
4.03	DOTD STM Tort Liability for Maintenance WBT	
4.04	DOTD BP Tort Liability: Depositions and Employee as a Witness WBT	
4.05	DOTD STW Maintenance Traffic Control	
5.	Engineering Technician 3	Due Date: 52 weeks
5.01	DOTD ATSSA Traffic Control Technician (TCT) Louisiana Specific - Expires 4 years	

DOTD Curriculum STW Flagging Refresher

DOTD STW Basic Flagging Refresher WBT - Expires 4 years

ATSSA TCT and TCS:

At ET 3: DOTD ATSSA Traffic Control Technician (TCT) Louisiana Specific - Expires 4 years

At ET 5: DOTD ATSSA Traffic Control Supervisor (TCS) Louisiana Specific - Expires 4 years

Will be in appropriate curriculum.



District Area Engineer Assistant (D:AEAS)

Manually assign.

DOTD Program ET-STP District Area Engineer Assistant Due Date: 5 years

1.	Safety Training	Due Date: 13 weeks
1.01	DOTD LP Electrocutation Prevention WBT	
1.02	DOTD LP Heat Stress WBT	
1.03	DOTD LP Poisonous Plant Safety WBT	
1.04	DOTD LP Safe Driving WBT	
1.05	DOTD STM Handling Hazardous Chemicals WBT	
1.06	DOTD STW Work Zone TTC Safety WBT	
1.07	DOTD STW The ABCs of Work Zone Personnel Safety WBT	
1.08	DOTD STW Basic Flagging Procedures	
2.	Fundamental Training	Due Date: 39 weeks
2.01	DOTD STP Math Construction Part 1	
2.02	DOTD STP Standard Specifications	
3.	Engineering Technician 1	Due Date: 52 weeks
3.01	DOTD STP English Grammar	
3.02	DOTD STP Highway Plan Reading Vol 1	
4.	Engineering Technician 2	Due Date: 52 weeks
4.01	DOTD STP Highway Plan Reading Vol 2	
4.02	DOTD STP Math Construction Part 2	
5.	Additional Training	Due Date: 104 weeks
5.01	DOTD STM Maintenance Activity Guide and Manual Study Guide	
5.02	DOTD STM Tort Liability for Maintenance WBT	
5.03	DOTD BP Tort Liability: Depositions and Employee as a Witness WBT	
5.04	DOTD STC Surveying Introduction WBT	
5.05	DOTD STM Basic Maintenance Leveling	
5.06	DOTD LD Professional Writing	
5.07	DOTD LD Conflict Management	

Other training may be individually assigned as desired.



District Construction Inspection, Lab and Training – General Information

District Construction Inspectors are located in the Districts in Units 2xx. The last digit of the Unit number indicates the district, while the center digit is a sequential number within each district. District digits are 0 (62), 1 (58), 2, 3, 4, 5, 6 (61), 7, 8. These Units also have an office Engineering Technician who will have slightly different training requirements. The inspectors must complete Specialty Areas and Certifications depending on their job title. The office person must complete Specialty Areas but is not required to obtain Certifications.

District Laboratory employees are located in the District Labs in Units 15x where the last digit indicates the district as it does with Construction Inspectors. These Units also have an office Engineering Technician who will have slightly different training requirements. Lab personnel must complete Specialty Areas and at a certain level obtain a District Lab Authorization.

District Training offices are located in every district and are predominately in Unit 001. They are responsible for delivering all specialty training to personnel in their district ranging from Maintenance employees to Construction and Laboratory employees who require Specialty Areas and Certifications. District Trainers are required to have Specialty Areas and Certifications themselves in order to be approved to train and test other employees in these areas.

Specialty Area and/or Certification requirements

All Engineering Technicians in the groups above have training that is required to be current in their current job title, and training that must be complete before advancing through reallocation or promotion to a higher job title.

The Specialty Area Program(s) to complete are determined by the supervisor. Employees may work on the training requirements for a Specialty Area without actually being subscribed to it, but ultimately should be subscribed to it before taking the Specialty Area exam. Exams are administered by the District Trainers. Results are entered by LTRC.

After completion of a Specialty Area, the employee should obtain 6 months of field experience before doing a Performance Evaluation administered by a District Trainer who has the Certification. Successful completion of the Performance Evaluation will result in a Certification being issued by LTRC.

Certifications are good for 5 years. The number of required Certifications must be maintained for the job level the person is in.



District Construction Inspectors (C:INSP)

Job Titles will be converting to Construction Inspectors.

Employees are assigned to this program if they are an Engineering Technician in organizational units encompassing the Districts and Units 2xx and are not designated as an “office” technician.

DOTD Program ET-STP District Construction Inspection

1.	Safety Training	Due Date: 13 weeks
1.01	DOTD LP Electrocutation Prevention WBT	
1.02	DOTD LP Heat Stress WBT	
1.03	DOTD LP Poisonous Plant Safety WBT	
1.04	DOTD LP Safe Driving WBT	
1.05	DOTD STW Work Zone TTC Safety WBT	
1.06	DOTD STW The ABCs of Work Zone Personnel Safety WBT	
2.	Fundamental Training	Due Date: 39 weeks
2.01	DOTD STP Math Construction Part 1	
2.02	DOTD STP Standard Specifications	
2.03	DOTD STW Basic Flagging Procedures	
2.04	DOTD STC Surveying Introduction WBT	
2.05	DOTD STC PCC Sampling and Testing	
2.06	DOTD STC PCC Sampling Plastic Concrete WBT	
2.07	DOTD STX PCC Sampling and Testing Authorization Performance Evaluation	
2.08	DOTD STC Sampling Soils Aggregates and Mixtures Exam	
2.09	DOTD STC Sampling Soils Aggregates and Mixtures WBT	
2.10	DOTD STC Sampling Soils Aggregates and Mixtures Performance Evaluation	
3.	Engineering Technician 1	Due Date: 52 weeks
3.01	DOTD STP Highway Plan Reading Vol 1	
3.02	DOTD STC Basic Pipe Installation	
4.	Engineering Technician 2	Due Date: 52 weeks
4.01	DOTD STP Math Construction Part 2	
4.02	DOTD STP Highway Plan Reading Vol 2	
4.03	DOTD STC Construction Leveling	
4.04	DOTD ATSSA Traffic Control Technician – expires 4 years	
5.	To Advance above Engineering Technician 2	
5.01	<p>To advance from one title to the next: Training status must be in Compliance, all STP training up to and including the current title must be complete, and anything additional below must be complete.</p> <p>To advance to an Engineering Technician 3 - 1 Full Certification To advance to an Engineering Technician 4 - 2 Full Certifications To advance to an Engineering Technician 5 - 2 Full Certifications and 1 Additional Specialty Area At Engineering Technician 5 - DOTD ATSSA Traffic Control Supervisor To advance to an Engineering Technician 7 - 3 Full Certifications and 1 Additional Specialty Area</p> <p>Click Mark Complete to complete this section.</p>	

DOTD Curriculum STW Flagging Refresher and appropriate ATSSA TCT or TCS Curriculum.



District Laboratory

Employees are assigned to this program if they are an Engineering Technician in organizational units encompassing the Districts and Units 15x and are not designated as an “office” technician.

DOTD Program ET-STP District Lab Basic

1.	Safety Training	Due Date: 13 weeks
1.01	DOTD LP Electrocutation Prevention WBT	
1.02	DOTD LP Heat Stress WBT	
1.03	DOTD LP Poisonous Plant Safety WBT	
1.04	DOTD LP Safe Driving WBT	
1.05	DOTD STW Work Zone TTC Safety WBT	
1.06	DOTD STW The ABCs of Work Zone Personnel Safety WBT	
2.	Fundamental Training	Due Date: 39 weeks
2.01	DOTD STP Standard Specifications	
2.02	DOTD STP Math Construction Part 1	
2.03	DOTD STW Basic Flagging Procedures	
2.04	DOTD-AUTH Aggregate Tester	
3.	Engineering Technician 1	Due Date: 52 weeks
3.01	DOTD STP Highway Plan Reading Vol 1	
3.02	DOTD STL PE – Dist Lab Engr Tech 1 : 6 Perf Evals	
4.	Engineering Technician 2	Due Date: 52 weeks
4.01	DOTD STP Math Construction Part 2	
4.02	DOTD STP Highway Plan Reading Vol 2	
4.05	DOTD STL PE – Dist Lab Engr Tech 2 : 6 Perf Evals	
5.	To advance above Engineering Technician 2	
	Requirements to Advance To advance from one title to the next: Training status must be in Compliance, all STP training up to and including the current title must be complete, and anything additional below must be complete.	
5.01	To advance to an Engineering Technician 3 - 1 Specialty Area At Engineering Technician 3 - DOTD STL PE – Dist Lab Engr Tech 3 : 6 Perf. Evals To advance to an Engineering Technician 4 - 2 Specialty Areas At Engineering Technician 4 - DOTD STL PE – Dist Lab Engr Tech 4 : 6 Perf. Evals To advance to an Engineering Technician 5 - 2 Specialty Area and pass District Operations Exam At Engineering Technician 5 - DOTD ATSSA Traffic Control Supervisor To advance to an Engineering Technician 7 - 3 Specialty Areas	

DOTD Curriculum STW Flagging Refresher and appropriate ATSSA TCT or TCS Curriculum.

Requirements for the Asphalt SuperTech

At EngrTech 3 - complete Specialty Area for ACM Plant Technician and the Authorization.

At EngrTech 4 - complete Specialty Area for ACM Plant Inspection and the Certification.

At EngrTech 5 - complete Specialty Area for ACM Paving and the Certification.



District Office Technicians - Construction Inspection and Lab

Employees are assigned to this program by contacting the DOTD SuccessFactors Administrator. Employees may have been assigned to the regular program and have to be unassigned.

DOTD Program ET-STP District Construction-Lab Office

1.	Safety Training	Due Date: 13 weeks
1.01	DOTD LP Electrocutation Prevention WBT	
1.02	DOTD LP Heat Stress WBT	
1.03	DOTD LP Poisonous Plant Safety WBT	
1.04	DOTD LP Safe Driving WBT	
1.05	DOTD STW Work Zone TTC Safety WBT	
2.	Fundamental Training	Due Date: 39 weeks
2.01	DOTD STP Math Construction Part 1	
2.02	DOTD STP Standard Specifications	
3.	Engineering Technician 1	Due Date: 52 weeks
3.01	DOTD STP English Grammar	
3.02	DOTD STP Highway Plan Reading Vol 1	
4.	Engineering Technician 2	Due Date: 52 weeks
4.01	DOTD STP Highway Plan Reading Vol 2	
4.02	DOTD STP Math Construction Part 2	
5.	To Advance above Engineering Technician 2	
5.01	Requirements to Advance To advance from one title to the next: Training status must be in Compliance. All STP training up to and including the current title must be complete. Anything additional below must be complete. To advance to Engineering Technician 3 - 1 Specialty Area To advance to Engineering Technician 4 - 2 Specialty Areas To advance to Engineering Technician 5 - 3 Specialty Areas	



District Training Technicians (A:TRNG)

Employees are assigned to this program by contacting the DOTD SuccessFactors Administrator.

DOTD Program ET-STP District Training

1.	Safety Training	Due Date: 13 weeks
1.01	DOTD LP Electrocutation Prevention WBT	
1.02	DOTD LP Heat Stress WBT	
1.03	DOTD LP Poisonous Plant Safety WBT	
1.04	DOTD LP Safe Driving WBT	
1.05	DOTD STW Work Zone TTC Safety WBT	
1.06	DOTD STW The ABCs of Work Zone Personnel Safety WBT	
2.	Fundamental Training	Due Date : 39 weeks
2.01	DOTD STP Standard Specifications	
2.02	DOTD STP Math Construction Part 1	
2.03	DOTD STW Basic Flagging Procedures	
2.04	DOTD STC Surveying Introduction WBT	
2.05	DOTD STC PCC Sampling and Testing	
2.06	DOTD STC PCC Sampling Plastic Concrete WBT	
2.07	DOTD STX PCC Sampling and Testing Authorization Performance Evaluation	
2.08	DOTD STC Sampling Soils Aggregates and Mixtures Exam	
2.09	DOTD STC Sampling Soils Aggregates and Mixtures WBT	
2.10	DOTD STC Sampling Soils Aggregates and Mixtures Performance Evaluation	
3.	Engineering Technician 1	Due Date: 52 weeks
3.01	DOTD STP Highway Plan Reading Vol 1	
3.02	DOTD STP English Grammar	
3.03	DOTD STC Basic Pipe Installation	
4.	Engineering Technician 2	Due Date: 52 weeks
4.01	DOTD STP Math Construction Part 2	
4.02	DOTD STP Highway Plan Reading Vol 2	
4.03	DOTD STC Construction Leveling	
4.04	DOTD ATSSA Traffic Control Technician (TCT) Louisiana Specific - Expires 4 years	
4.05	DOTD STC Profiler Operation WBT	
5.	To advance above Engineering Technician 2	
	Requirements to advance To advance from one title to the next: Training Status must be In Compliance, all STP training up to and including the current title must be complete, and anything additional below must be complete.	
5.01	To advance to an Engineering Technician 3 - 1 Full Certification To advance to an Engineering Technician 4 - 2 Full Certifications At an Engineering Technician 4 - Receive approval for DOTD STX Trainer Certification Committee Approval To advance to an Engineering Technician 5 – 2 Full Certifications and 1 Additional Specialty Area At an Engineering Technician 5 - DOTD ATSSA Traffic Control Supervisor To advance to an Engineering Technician 7 - 3 Full Certifications and 1 Additional Specialty Area	



District Construction Inspection, Lab and Training - Specialty Areas

Programs for Specialty Areas are assigned to each person individually.

All programs are set as due in 260 weeks from assignment.

All Specialty Areas have two sections; Section 1 consists of course work, Section 2 is an Exam.

Employees who completed Specialty Area Programs prior to conversion to the current LMS and those who complete them afterwards will be given a “course item history record” as follows:

- [DOTD-AREA Embankment and Base Course](#)
- [DOTD-AREA ACM Paving](#)
- [DOTD-AREA ACM Plant Technician](#)
- [DOTD-AREA ACM Plant Inspection](#)
- [DOTD-AREA PCC Paving](#)
- [DOTD-AREA PCC Plant](#)
- [DOTD-AREA Structural Concrete](#)

DOTD Construction Specialty Area Program - Embankment and Base Course

1.	Required Courses
1.01	DOTD STC Embankment and Excavation Inspection
1.02	DOTD STC Base Course Inspection
1.03	DOTD STC Basic Pipe Installation
1.04	DOTD STC Density Testing for Embankment and Base Course WBT
1.05	DOTD STC Density Testing for Embankment and Base Course
2.	Specialty Area Exam
2.01	DOTD STX Embankment and Base Course Inspection Specialty Area Exam

Credit is given for [DOTD-AREA Embankment and Base Course](#) on completion of program.

DOTD Construction Specialty Area Program - ACM Paving

1.	Required Courses
1.01	DOTD STC ACM Paving Inspection Vol 1
1.02	DOTD STC ACM Paving Inspection Vol 2
1.03	DOTD STC Profiler Operation WBT
1.04	DOTD-AUTH Profiler Inspector
2.	Specialty Area Exam
2.01	DOTD STX ACM Paving Inspection Specialty Area Exam

Credit is given for [DOTD-AREA ACM Paving](#) on completion of program.



DOTD Construction Specialty Area Program - ACM Plant Technician

1.	Required Courses
1.01	DOTD-AUTH Aggregate Tester
1.02	DOTD STC ACM Plant Inspection
1.03	DOTD STP Math Construction Part 2
1.04	DOTD STC ACM Testing and Analysis 1 WBT
1.05	DOTD STC ACM Testing and Analysis 2 WBT
1.06	DOTD STC ACM Testing and Analysis 1 Exam
1.07	DOTD STC ACM Testing and Analysis 1 Performance Evaluations
2.	Specialty Area Exam
2.01	DOTD STX ACM Plant Technician Specialty Area Exam

Credit is given for [DOTD-AREA ACM Plant Technician](#) on completion of program.

DOTD Construction Specialty Area Program - ACM Plant

1.	Required Courses
1.01	DOTD-AUTH Aggregate Tester
1.02	DOTD-AUTH ACM Plant Technician
1.03	DOTD STC ACM Superpave Mix Design Class
2.	Specialty Area Exam
2.01	DOTD STX ACM Plant Inspection Specialty Area Exam

Credit is given for [DOTD-AREA ACM Plant Inspection](#) on completion of program.

DOTD Construction Specialty Area Program - PCC Paving

1.	Required Courses
1.01	DOTD STC PCC Paving Introduction WBT
1.02	DOTD STC PCC Paving Inspection
1.03	DOTD STC PCC Plant Inspection
1.04	DOTD STC PCC Sampling Plastic Concrete WBT
1.05	DOTD STC PCC Sampling and Testing
1.06	DOTD-AUTH Profiler Inspector
2.	Specialty Area Exam
2.01	DOTD STX PCC Paving Inspection Specialty Area Exam

Credit is given for [DOTD-AREA PCC Paving](#) on completion of program.



DOTD Construction Specialty Area Program - PCC Plant

1.	Required Courses
1.01	DOTD-AUTH PCC Field Tester
1.02	DOTD-AUTH Aggregate Tester
1.03	DOTD STC PCC Plant Inspection
1.04	DOTD STC PCC Sampling Plastic Concrete WBT
1.05	DOTD STC PCC Sampling and Testing
2.	Specialty Area Exam
2.01	DOTD STX PCC Plant Inspection Specialty Area Exam

Credit is given for [DOTD-AREA PCC Plant Inspection](#) on completion of program.

DOTD Construction Specialty Area Program - Structural Concrete

1.	Required Courses
1.01	DOTD STC Structural Concrete Inspection Vol 1
1.02	DOTD STC Structural Concrete Inspection Vol 2
1.03	DOTD STC PCC Plant Inspection
1.04	DOTD STC PCC Sampling Plastic Concrete WBT
1.05	DOTD STC PCC Sampling and Testing
1.06	DOTD STC Pile Driving Inspection
2.	Specialty Area Exam
2.01	DOTD STX Structural Concrete Inspection Specialty Area Exam

Credit is given for [DOTD-AREA Structural Concrete](#) on completion of program.

District Construction Inspection, Lab and Training – Miscellaneous

DOTD Construction Program - Soil and Aggregate Stockpile Sampling

Needed for Embankment Cert and any PCC Cert. Can be assigned as needed.

1.	Course Requirements
1.01	DOTD STC Sampling Soils Aggregates and Mixtures Exam
1.02	DOTD STC Sampling Soils Aggregates and Mixtures WBT
2.	Performance Evaluation
2.01	DOTD STC Sampling Soils Aggregates and Mixtures Performance Evaluation

DOTD Curriculum BP Ethics for Construction

Curriculum is assigned to ALL personnel in Districts, Units 15x and 2xx.

DOTD BP Ethics for Construction Personnel WBT – Expires 3 years



District Construction Inspection, Lab and Training - Authorizations

Authorizations do not expire.

DOTD Construction Authorization Program – Aggregate Tester Due Date: 200 weeks

1.	Course Requirements
1.01	DOTD STP Math Construction Part 1
1.02	DOTD STC Sampling Soils Aggregates and Mixtures Exam
1.03	DOTD STC TC3 Aggregate Basics WBT
1.04	DOTD STC TC3 Reducing Aggregate Samples WBT
1.05	DOTD STP Standard Specifications
2.	Authorization Exam
2.01	DOTD STX Aggregate Tester Authorization Exam
3.	Performance Evaluation
3.01	DOTD STX Aggregate Tester Authorization Performance Evaluation

Credit is given for [DOTD-AUTH Aggregate Tester](#) on completion of program.

DOTD Construction Authorization Program - Nuclear Device Operator Due Date: 200 weeks (Needed for Embankment/Base Certification)

1.	Course Requirements
1.01	DOTD NU Radiation Safety Introduction WBT
1.02	DOTD NU Radiation Safety
1.03	DOTD STC Density Testing for Embankment and Base Course
2.	Performance Evaluation
2.01	DOTD STX Nuclear Density Performance Evaluation

Credit is given for [DOTD-AUTH Nuclear Density](#) on completion of program.

DOTD Construction Authorization Program - ACM Plant Technician Due Date: 200 weeks

1.	Course Requirements
1.01	DOTD-AUTH Aggregate Tester
1.02	DOTD STC ACM Plant Inspection
1.03	DOTD STP Math Construction Part 2
1.04	DOTD STC ACM Testing and Analysis 1 WBT
1.05	DOTD STC ACM Testing and Analysis 2 WBT
1.06	DOTD STC ACM Testing and Analysis 1 Exam
1.07	DOTD STC ACM Testing and Analysis 1 Performance Evaluations
2.	Specialty Area Exam
2.01	DOTD STX ACM Plant Technician Specialty Area Exam
3.	Performance Evaluation
3.01	DOTD STX ACM Plant Technician Authorization Performance Evaluation

Credit is given for [DOTD-AUTH ACM Plant Technician](#) on completion of program.



DOTD Construction Authorization Program - PCC Field Tester Due Date: 365 days

1.	Required Courses
1.01	DOTD STC PCC Sampling and Testing
1.02	DOTD STC PCC Sampling Plastic Concrete WBT
2.	Performance Evaluation
2.01	DOTD STX PCC Sampling and Testing Authorization Performance Evaluation

Credit is given for [DOTD-AUTH PCC Field Tester](#) on completion of program.

DOTD Construction Authorization Program – District Lab Operations Due Date: 200 weeks

1.	Required Performance Evaluations
1.01	DOTD STL PE – Dist Lab Engr Tech 1 : 6 Perf Evals
1.02	DOTD STL PE – Dist Lab Engr Tech 2 : 6 Perf Evals
1.03	DOTD STL PE – Dist Lab Engr Tech 3 : 6 Perf Evals
1.04	DOTD STL PE - Dist Lab Engr Tech 4 : 6 Perf Evals
2.	Written Exam
2.01	DOTD STX District Laboratory Operations Authorization Exam

Credit is given for [DOTD-AUTH District Lab Operations](#) on completion of program.



District Construction Inspection and Training - Certifications

Certifications are good for 5 years and can be renewed.

At a minimum, employees must maintain the required number of certifications their job title requires.

A Certification can be obtained by completing three steps:

- 1) Complete the Specialty Area Program
- 2) Obtain field experience
- 3) Pass a Performance Evaluation.

Employees who complete Certifications will be given a “course item history record” as follows:

DOTD-CERT Embankment and Base Course - expires 5 years

DOTD-CERT ACM Paving - expires 5 years

DOTD-CERT ACM Plant - expires 5 years

DOTD-CERT PCC Paving - expires 5 years

DOTD-CERT PCC Plant - expires 5 years

DOTD-CERT Structural Concrete - expires 5 years

Certification Curriculums

After obtaining a Certification, the employee is placed in the Certification Curriculum that will require the certification to be renewed every 5 years.

DOTD-CERT Curriculum - Embankment and Base Course

DOTD-CERT Embankment and Base Course - expires 5 years

DOTD-CERT Curriculum - ACM Paving

DOTD-CERT ACM Paving - expires 5 years

DOTD-CERT Curriculum - ACM Plant

DOTD-CERT ACM Plant - expires 5 years

DOTD-CERT Curriculum - PCC Paving

DOTD-CERT PCC Paving - expires 5 years

DOTD-CERT Curriculum - PCC Plant

DOTD-CERT PCC Plant - expires 5 years

DOTD-CERT Curriculum - Structural Concrete

DOTD-CERT Structural Concrete - expires 5 years

Renewing a Certification

To renew a Certification, the employee must take and pass its Recertification Exam. After successful completion of the exam, the Certification is reissued for another 5 year period.

If the employee will no longer maintain the certification, the District Trainer will need to remove the curriculum from the employee.



STRUCTURED TRAINING for MAINTENANCE JOBS

Introduction to Maintenance Jobs

PPM 59 Appendix C covers Maintenance Jobs. All are in the WS pay grades unless noted below.

All jobs must complete and maintain the **State and Agency Mandated Training**. Because of the work environment for these jobs, safety training is extremely important. Initial safety training is required within the first 90 days and some safety training must be repeated on a regular basis. Safety Training has been standardized as much as possible as has some of the supervisor training.

It is possible for a job title to be used in multiple types of work settings, where the training needs may differ. The Highway Foreman 2 in particular serves as a supervisor in multiple work settings. In addition to the job title's training requirements, this job will also require the training needed by their subordinates.

The **Equipment Operator Certification Program (EOCP)** was established to ensure safe operating of equipment through the training of employees and the requirement to operate equipment as a trainee until the employee has sufficient experience to operate the equipment without supervision by a certified operator.

An introduction to the Equipment Operator Certification Program (EOCP) with information about record keeping in the LMS and the assignment of employees to complete training can be found in the main part of this document. It is important that employees who operate equipment receive the appropriate training and that certified operators are recertified every 4 years on the equipment they operate. Training is conducted by approved instructors with experience operating the equipment.

Road and Bridge Maintenance Crews

Parish Maintenance crews are located in all districts in Units 5xx except 500.

These crews do not have Mobile Equipment Operator Heavy 2s or Highway Foreman 2s.
Supervisors consist of Highway Foremen 1s and Parish Highway Maintenance Superintendent.

Districtwide Maintenance crews are located in the districts in units 500 and 7xx.

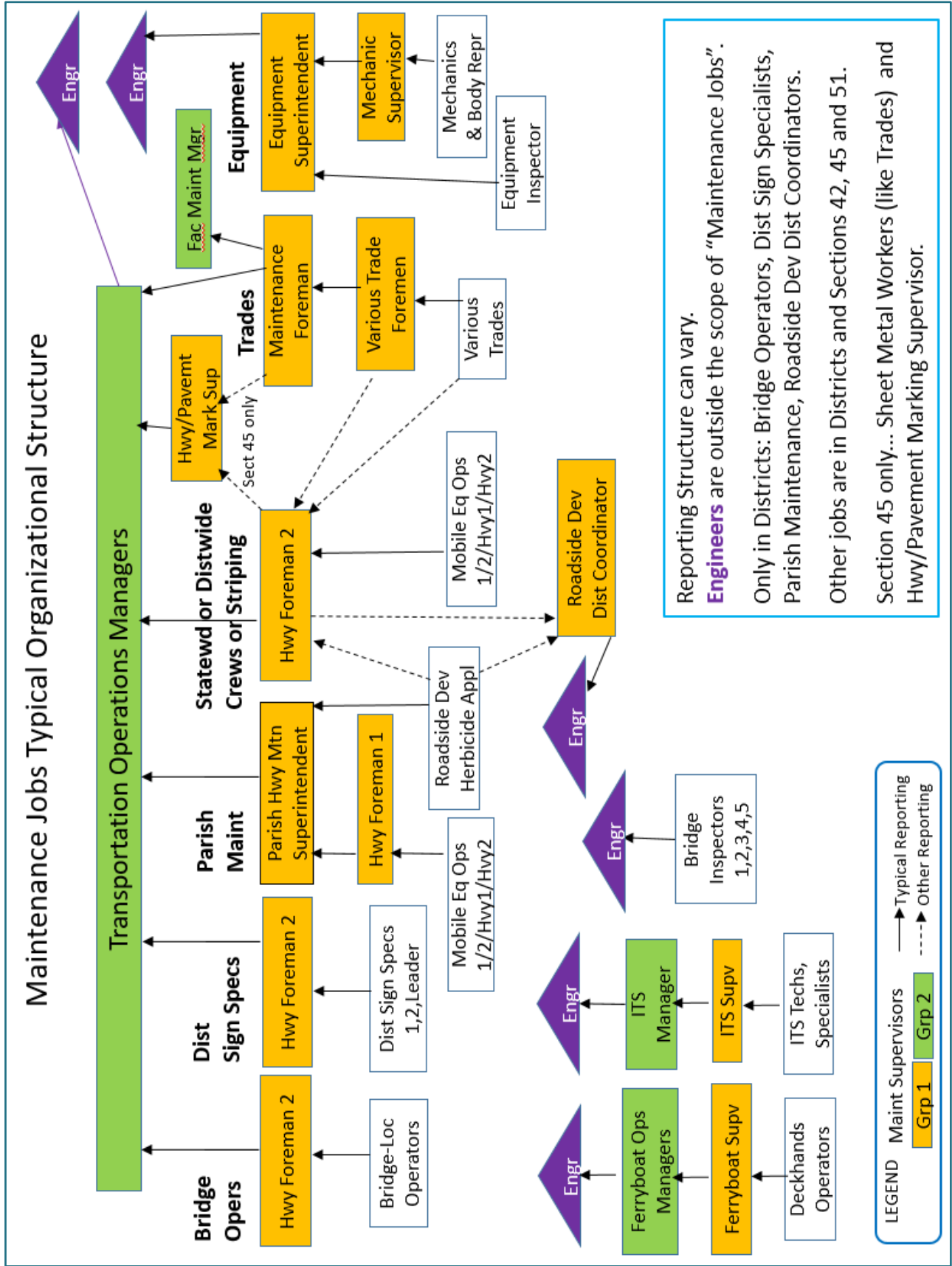
Crews in units 77x are striping crews with slightly different training requirements.
The supervisor is typically a Highway Foreman 2.

Statewide Maintenance crews are located in Section 42-006, Section 45, and Section 51-7xx.

The supervisor is typically a Highway Foreman 2.

Exceptions to Job Categories and Training

- Admin Coordinators in Maintenance Units are covered in the regular Admin Coordinator chapter.
- Jobs not in the WS series but are included in the Maintenance Group...Bridge Inspectors
- Maintenance Jobs without Structured Training
 - Aircraft Pilots, Custodians, Operating Engineers, Printing Operators
 - Facility Maintenance Assistant Manager, Manager A, Manager B



Reporting Structure can vary. **Engineers** are outside the scope of "Maintenance Jobs". Only in Districts: Bridge Operators, Dist Sign Specialists, Parish Maintenance, Roadside Dev Dist Coordinators. Other jobs are in Districts and Sections 42, 45 and 51. Section 45 only... Sheet Metal Workers (like Trades) and Hwy/Pavement Marking Supervisor.

LEGEND Maint Supervisors
Grp 1 Grp 2
 — Typical Reporting
 - - - Other Reporting



Mobile Equipment Operators

Equipment Operator requirements are assigned on an individual basis. See EOCP Section.

Job Code	Job Title	S U P	Program	Curric Mobile Eq Opers	Program Traffic Cntl	Curric Traffic Cntl
103460	MOB EQUIP OPER 1		By Location	X		
103440	MOB EQUIP OPER 2		By Location	X		
102860	MOB EQUIP OPER HEAVY 1		By Location	X	X	X
102890	MOB EQUIP OPER HEAVY 2		By Location	X	X	X

All Mobile Equipment Operators

DOTD Curriculum - Mobile Equipment Operator

DOTD LP Hazardous Materials Annual Refresher - Expires 1 year
DOTD LP Confined Spaces WBT - Expires 3 years
DOTD STW Basic Flagging Refresher WBT - Expires 4 years

All Mobile Equipment Operators Heavy 1 and Heavy 2

DOTD Program - Maintenance Traffic Control

Due Date: 2 years

1.	Traffic Control
1.01	DOTD STW Maintenance Traffic Control

DOTD Curriculum Maintenance Traffic Control Refresher

DOTD STW Maintenance Traffic Control Refresher – Expires 4 years
--

———— LOCATION DEPENDENT ————

MOEQOP All Mobile Equipment Operators EXCEPT STRIPING CREWS and Section 51 [MEOOPE](#)

DOTD Program – Mobile Equipment Operators Standard

1.	Safety Training	Due Date: 13 weeks
1.01	DOTD LP Electrocutation Prevention WBT	
1.02	DOTD LP Heat Stress WBT	
1.03	DOTD LP Poisonous Plant Safety WBT	
1.04	DOTD LP Safe Driving WBT	
1.05	DOTD STW Work Zone TTC Safety WBT	
1.06	DOTD STW The ABCs of Work Zone Personnel Safety WBT	
1.07	DOTD STW Basic Flagging Procedures	
1.08	DOTD LP Power/Hand Tool Safety WBT	
1.09	DOTD STEq Lowboy Transporting Construction Equipment WBT	



DISTRP All Mobile Equipment Operators in STRIPING CREWS – Districts, Units 77x & Section 45
MEQSTR

DOTD Program – Mobile Equipment Operators Striping

1.	Safety Training	Due Date: 13 weeks
1.01	DOTD LP Electrocution Prevention WBT	
1.02	DOTD LP Heat Stress WBT	
1.03	DOTD LP Poisonous Plant Safety WBT	
1.04	DOTD LP Safe Driving WBT	
1.05	DOTD STW Work Zone TTC Safety WBT	
1.06	DOTD STW The ABCs of Work Zone Personnel Safety WBT	
1.07	DOTD STW Basic Flagging Procedures	
1.08	DOTD LP Power/Hand Tool Safety WBT	
1.09	DOTD STM Handling Hazardous Chemicals WBT	

MEOS51 All Mobile Equipment Operators in Section 51

MEQ51

DOTD Program – Mobile Equipment Operators Section 51

1.	Safety Training	Due Date: 13 weeks
1.01	DOTD LP Electrocution Prevention WBT	
1.02	DOTD LP Heat Stress WBT	
1.03	DOTD LP Poisonous Plant Safety WBT	
1.04	DOTD LP Safe Driving WBT	
1.05	DOTD STW Work Zone TTC Safety WBT	
1.06	DOTD STW The ABCs of Work Zone Personnel Safety WBT	
1.07	DOTD STW Basic Flagging Procedures	
1.08	DOTD LP Power/Hand Tool Safety WBT	
1.09	DOTD STM Handling Hazardous Chemicals WBT	

DOTD PC Computer Program – Technicians

*is required of Section 51 MEO Heavy 1 and 2 and Highway Foreman 2.
 See main section of Catalog.*



Highway Foreman 1 and Parish Highway Maintenance Superintendent

Parish Maintenance Units - Jobs are located in Districts, in Units 5xx except 500.

Equipment Operator requirements are assigned on an individual basis. See EOCP Section.

Job Code	Job Title	SUP	Program Foreman 1 /Par Sup	Curric MOEQOP	Program Traffic Cntl	Curric Traffic Cntl
128940	HIGHWAY FOREMAN 1	1	X	X	X	X
134120	PARISH HWY MAIN SUPT	1	X	X	X	X

Assigned to same training as crews which include Mobile Equipment Operators 1, 2 and 1/Heavy.

DOTD Curriculum - Mobile Equipment Operator

DOTD LP Hazardous Materials Annual Refresher - Expires 1 year
DOTD LP Confined Spaces WBT - Expires 3 years
DOTD STW Basic Flagging Refresher WBT - Expires 4 years

DOTD Program - Maintenance Traffic Control

Due Date: 2 years

1.	Traffic Control
1.01	DOTD STW Maintenance Traffic Control

DOTD Curriculum Maintenance Traffic Control Refresher

DOTD STW Maintenance Traffic Control Refresher - Expires 4 years
--

Job Title Specific Program

DOTD Program - Maintenance Highway Foreman 1 and Parish Superintendent PMAIN

1.	Safety Training	Due Date: 13 weeks
1.01	DOTD LP Electrocutation Prevention WBT	
1.02	DOTD LP Heat Stress WBT	
1.03	DOTD LP Poisonous Plant Safety WBT	
1.04	DOTD LP Safe Driving WBT	
1.05	DOTD STW Work Zone TTC Safety WBT	
1.06	DOTD STW The ABCs of Work Zone Personnel Safety WBT	
1.07	DOTD STW Basic Flagging Procedures	
1.08	DOTD LP Power/Hand Tool Safety WBT	
1.09	DOTD STEq Lowboy Transporting Construction Equipment WBT	
2.	Maintenance Highway Worker Supervisors	Due Date: 39 weeks
2.01	DOTD STM Tort Liability for Maintenance WBT	
2.02	DOTD BP Tort Liability: Depositions and Employee as a Witness WBT	
2.03	DOTD STM Handling Hazardous Chemicals WBT	
2.04	DOTD STP English Grammar	
2.05	DOTD STP Math Maintenance	
2.06	DOTD STM Maintenance Activity Guide and Manual Study Guide	



3.	Highway Repair Videos	Due Date: 52 weeks
3.01	DOTD STMR Asphalt Pavement Crack Repair WBT	
3.02	DOTD STMR Mechanical Clean Unlined Ditch WBT	
3.03	DOTD STMR Single/Multi Surface Treatment WBT	
3.04	DOTD STMR Base and Sub-Base Repair WBT	
3.05	DOTD STMR Cleaning Lined Ditches-Culverts and Catch Basins WBT	
3.06	DOTD STMR Pothole Repair: Asphalt Concrete Pavement WBT	
3.07	DOTD STMR Pothole Repair: Asphalt Surface Treatment WBT	
3.08	DOTD STMR Repair Depressions/Rutting/Corrugations WBT	
3.09	DOTD STMR Shoulder Earth/Gravel Replenish WBT	
3.10	DOTD STMR Shoulder Earth/Gravel Reshape WBT	
3.11	DOTD STMR Unpaved Road Patching WBT	
3.12	DOTD STMR Unpaved Road Regravelling WBT	
3.13	DOTD STMR Unpaved Road Smooth/Reshape WBT	

Additional STRM courses may be taken if needed.

- DOTD STMR Cleaning/Clearing of Bridges WBT
- DOTD STMR Concrete Bridge Deck Repair WBT
- DOTD STMR Structural Repair: Concrete Cracks Injection-Epoxy
- DOTD STMR Asphalt Surface Maintenance



Roadside Development

RDSDD First 3 jobs below are located in all districts. Reporting structure varies by district.

Equipment Operator requirements are assigned on an individual basis. See EOCP Section.

Herbicide Applicator should be qualified to operate Herbicide Spray System at a minimum.

Job Code	Job Title	Job Cat	S U P	Leadership Program	Program Roadside	Curriculum Herbicide	Curriculum Mtn Traf Control
155460	ROADSIDE DEV HERB APP	WS			X	X	X
152580	ROADSIDE DEV DIST COOR TR	WS		P1	X	X	
108620	ROADSIDE DEV DIST COORD	WS	1	P2	X	X	
108610	ROADSIDE DEV MANAGER	WS	1	P3	Job in Section 51 only		

DOTD Program - Roadside Development

Due Date: 65 weeks

1.	Safety Training	Due Date: 13 weeks
1.01	DOTD LP Electrocutation Prevention WBT	
1.02	DOTD LP Heat Stress WBT	
1.03	DOTD LP Poisonous Plant Safety WBT	
1.04	DOTD LP Safe Driving WBT	
1.05	DOTD STW Work Zone TTC Safety WBT	
1.06	DOTD STW The ABCs of Work Zone Personnel Safety WBT	
1.07	DOTD STW Basic Flagging Procedures	
1.08	DOTD LP Power/Hand Tool Safety WBT	
1.09	DOTD STM Handling Hazardous Chemicals WBT	
2.	Required Courses	Due Date: 52 weeks
2.01	DOTD STP Math Maintenance	
2.02	DOTD STW Maintenance Traffic Control	

DOTD Curriculum - Roadside Development Herbicide Applicator

DOTD LP Hazardous Materials Annual Refresher - Expires 1 year
DOTD LP Confined Spaces WBT - Expires 3 years
DOTD STW Basic Flagging Refresher WBT - Expires 4 years
DOTD-CRED Herbicide Applicator Card - Expires 2 years

Only assigned to Herbicide Applicator

DOTD Curriculum Maintenance Traffic Control Refresher

DOTD STW Maintenance Traffic Control Refresher – Expires 4 years
--



District Sign Specialists

Equipment Operator requirements are assigned on an individual basis. See EOCP Section.

Job Code	Job Title	S U P	Program Job SIGNSP	Curriculum Dist Sign Specialist	Curriculum ATSSA TCT or TCS	Curriculum ATSSA Sign Tech
151980	DISTRICT SIGN SPEC 1		1	X		
151990	DISTRICT SIGN SPEC 2		2	X	TCT	Level 1
173370	DISTRICT SIGN SPEC LEADER		3	X	TCS	Level 2
128950	HIGHWAY FOREMAN 2	1	3	X	TCS	Level 2

Jobs are located in the Districts, Units 750 and 751.

DOTD Program - District Sign Specialist 1

1.	Safety Training	Due Date: 13 weeks
1.01	DOTD LP Electrocutation Prevention WBT	
1.02	DOTD LP Heat Stress WBT	
1.03	DOTD LP Poisonous Plant Safety WBT	
1.04	DOTD LP Safe Driving WBT	
1.05	DOTD LP Power/Hand Tool Safety WBT	
1.06	DOTD STW The ABCs of Work Zone Personnel Safety WBT	
1.07	DOTD STW Work Zone TTC Safety WBT	
1.08	DOTD STW Basic Flagging Procedures	
2.	District Sign Specialist 1	Due Date: 39 weeks
2.01	DOTD STM Small Traffic Sign Maintenance	

DOTD Program - District Sign Specialist 2

1.	Safety Training	Due Date: 13 weeks
1.01	DOTD LP Electrocutation Prevention WBT	
1.02	DOTD LP Heat Stress WBT	
1.03	DOTD LP Poisonous Plant Safety WBT	
1.04	DOTD LP Safe Driving WBT	
1.05	DOTD LP Power/Hand Tool Safety WBT	
1.06	DOTD STW The ABCs of Work Zone Personnel Safety WBT	
1.07	DOTD STW Work Zone TTC Safety WBT	
1.08	DOTD STW Basic Flagging Procedures	
2.	District Sign Specialist 1	Due Date: 39 weeks
2.01	DOTD STM Small Traffic Sign Maintenance	
3.	District Sign Specialist 2	Due Date: 52 weeks
3.01	DOTD STP Math Maintenance	
3.02	DOTD STM Tort Liability for Maintenance WBT	
3.03	DOTD BP Tort Liability: Depositions and Employee as a Witness WBT	
3.04	DOTD ATSSA Traffic Control Technician (TCT) Louisiana Specific - Expires 4 years	
3.05	DOTD ATSSA Traffic Sign Technician I (TST I) Louisiana Specific - Expires 4 years	



DOTD Program - District Sign Specialist Leader (Sign Hwy Foreman 2 also in this program)

1.	Safety Training	Due Date: 13 weeks
1.01	DOTD LP Electrocution Prevention WBT	
1.02	DOTD LP Heat Stress WBT	
1.03	DOTD LP Poisonous Plant Safety WBT	
1.04	DOTD LP Safe Driving WBT	
1.05	DOTD LP Power/Hand Tool Safety WBT	
1.06	DOTD STW The ABCs of Work Zone Personnel Safety WBT	
1.07	DOTD STW Work Zone TTC Safety WBT	
1.08	DOTD STW Basic Flagging Procedures	
2.	District Sign Specialist 1	Due Date: 39 weeks
2.01	DOTD STM Small Traffic Sign Maintenance	
3.	District Sign Specialist 2	Due Date: 52 weeks
3.01	DOTD STP Math Maintenance	
3.02	DOTD STM Tort Liability for Maintenance WBT	
3.03	DOTD BP Tort Liability: Depositions and Employee as a Witness WBT	
3.04	DOTD ATSSA Traffic Control Technician (TCT) Louisiana Specific - Expires 4 years	
3.05	DOTD ATSSA Traffic Sign Technician I (TST I) Louisiana Specific - Expires 4 years	
4.	District Sign Specialist Leader	Due Date: 52 weeks
4.01	DOTD ATSSA Traffic Sign Technician II (TST II) Louisiana Specific- Expires 4 years	
4.02	DOTD ATSSA Traffic Control Supervisor (TCS) Louisiana Specific	

DOTD Curriculum - District Sign Specialist

DOTD STW Basic Flagging Refresher WBT - Expires 4 years
DOTD LP Hazardous Materials Annual Refresher - Expires 1 year

ATSSA TCT or TCS? See chart above.

DOTD Curriculum ATSSA Traffic Control Technician Has not completed TCS.

DOTD ATSSA Traffic Control Technician (TCT) Louisiana Specific- - Expires 4 years

OR

DOTD Curriculum ATSSA Traffic Control Supervisor Refresher Has completed TCS.

DOTD ATSSA Traffic Control Supervisor Refresher (TCSR) Louisiana Specific - Expires 4 years

ATSSA Traffic Sign Technician level? See chart above.

DOTD Curriculum ATSSA Traffic Sign Technician 1 Completed TST I but not TST II

DOTD ATSSA Traffic Sign Technician I (TST I) Louisiana Specific - Expires 4 years

OR

DOTD Curriculum ATSSA Traffic Sign Technician 2 Completed TST II

DOTD ATSSA Traffic Sign Technician II (TST II) Louisiana Specific - Expires 4 years



Bridge Operators and Navigational Lock Operators

Bridge Operators are located in Districts in Units 9xx.

Org Units- Not Navigational Lock Operators.

Navigational Lock Operators are in District 02-Unit 912 only.

Org Units: 50021295, 50021310, 50021311, 50021312

Job Code	Job Title	S U P	Program Mtn Hwy Safety	Curriculum BRIDOP	Curriculum NAVLOC	Program Mtn Hwy Supers
Bridge Operators						
128760	BRIDGE-LOCK OPERATOR 1		X	X		
128680	BRIDGE-LOCK OPERATOR 2		X	X		
128950	HIGHWAY FOREMAN 2	1	X	X		X
Navigational Lock Operators (02-912)						
128760	BRIDGE-LOCK OPERATOR 1				X	
128680	BRIDGE-LOCK OPERATOR 2				X	
128950	HIGHWAY FOREMAN 2	1			X	X

DOTD Program - Maintenance Highway Worker Safety Due Date: 13 weeks

1.	Safety Training
1.01	DOTD LP Electrocutation Prevention WBT
1.02	DOTD LP Heat Stress WBT
1.03	DOTD LP Poisonous Plant Safety WBT
1.04	DOTD LP Safe Driving WBT
1.05	DOTD STW Work Zone TTC Safety WBT
1.06	DOTD STW The ABCs of Work Zone Personnel Safety WBT
1.07	DOTD STW Basic Flagging Procedures
1.08	DOTD LP Power/Hand Tool Safety WBT

DOTD Curriculum - Bridge Operators

DOTD STM Movable Bridges - Persons Duties - Expires 5 years
DOTD STW Basic Flagging Refresher WBT - Expires 4 years
DOTD LP Confined Spaces WBT - Expires 3 years
DOTD LP Lockout/Tagout WBT - Expires 1 year

DOTD Curriculum - Navigational Lock Operators

DOTD LP Confined Spaces WBT - Expires 3 years
DOTD LP Lockout/Tagout WBT - Expires 1 year
DOTD LP Power/Hand Tool Safety WBT
DOTD STM Electrical 201: Basic Electricity



Highway Foreman 2

Highway Foreman 2 is a supervisor in diverse areas, so also see requirements by job location.

Equipment Operator requirements are assigned on an individual basis. See EOCP Section.

Job Code	Job Title	S U P	Program Hwy Foreman 2	Location Specific Curriculum	Location Specific Program
128950	HIGHWAY FOREMAN 2	1	X	X	X

DOTD Program – Highway Foreman 2

Due Date: 52 weeks

1.	Required Courses
1.01	DOTD STM Tort Liability for Maintenance WBT
1.02	DOTD BP Tort Liability: Depositions and Employee as a Witness WBT
1.03	DOTD STM Handling Hazardous Chemicals WBT
1.04	DOTD STP English Grammar
1.05	DOTD STP Math Maintenance
1.06	DOTD STM Maintenance Activity Guide and Manual Study Guide

JOB LOCATION SPECIFIC TRAINING (See Job Location for additional requirements.)

A. District Sign Specialists (SIGNSP)

Jobs occur in D02/G751, D02/G750, D03/G750, D04/G750, D05/G750, D07/G750, D08/G750, D58/G750, D61/G750, D62/G750. Same requirements as District Sign Specialist Leader.

B. Bridge-Lock Operator (BRIDOP or NAVLOC)

Jobs occur in D02/G9*, D03/G9*, D07/G9*, D61/G9*, D62/G9*.
Same requirements as Bridge-Lock Operator, Bridge Operator or Nav Lock Operator.

C. Striping Crews (DISTRP)

Jobs occur in Districts, Units 77x and Section 45.
Same requirements as Mobile Equipment Operator Heavy 2 in Striping.

D. Districtwide or Statewide Crews, not Striping (MOEQOP)

Job in any location not included above follow requirements of Mobile Equipment Operators.
Same requirements as Mobile Equipment Operator Heavy 2, not Striping.

E. Section 51 Crews

Same requirements as Mobile Equipment Operator Heavy 2 in Section 51.



Highway Sign/Pavement Marking Supervisor

Jobs are located in Section 45 only.

Job Code	Job Title	SUP
160670	HWY SIGN/PAVE MARK SUPV	1

See training required of Transportation Operations Manager in Section 45.

DOTD Program - Transportation Ops Manager – Section 45

DOTD Curriculum – Transportation Ops Manager - Section 45



Transportation Operations Manager

Jobs are located in two different areas in all Districts and in Sections 45 and 51.

Job Code	Job Title	SUP	Program Location Dependent	Curriculum Location Dependent
160680	TRANSPORTATION OPS MGR	2	X	X

LOCATION DEPENDENT

TOMDTU	District Traffic Units	All districts, units 002 - Based on Organizational Units
TOMDPM	District Parish Maintenance	All districts and not Traffic
TOMS45	Section 45	All in section 45
TOMS51	Section 51	All in section 51 – follow Bridge Inspector program

TOMDTU - District Traffic Units supervising T-TRAF

Org Units: Districts in Units 002 and 003

See District Traffic Engineering (T-TRAF).

DOTD Program ET-STP District Traffic Engineering

DOTD Curriculum STW Flagging Refresher

ATSSA TCT and TCS:

Will be in appropriate curriculum:

DOTD Curriculum ATSSA Traffic Control Technician

OR *DOTD Curriculum ATSSA Traffic Control Supervisor Refresher*

TOMDPM - Districts EXCEPT for those in District Traffic Units

Org Units: Not Section 45 and Not Section 51 and Not District Traffic
May be able to specify org units in districts where these occur

DOTD Program - Transportation Ops Manager - District Parish Maintenance

1.	Safety Training	Due Date: 13 weeks
1.01	DOTD LP Electrocutation Prevention WBT	
1.02	DOTD LP Heat Stress WBT	
1.03	DOTD LP Poisonous Plant Safety WBT	
1.04	DOTD LP Safe Driving WBT	

DOTD Training Requirements Catalog



1.05	DOTD STW Work Zone TTC Safety WBT
1.06	DOTD STW The ABCs of Work Zone Personnel Safety WBT
1.07	DOTD STW Basic Flagging Procedures
1.08	DOTD LP Power/Hand Tool Safety WBT
1.09	DOTD STM Handling Hazardous Chemicals WBT
1.10	DOTD LP Asbestos Awareness WBT
2.	District Parish Maintenance Courses Due Date: 39 weeks
2.01	DOTD STP Standard Specifications
2.02	DOTD STP Highway Plan Reading Vol 1
2.03	DOTD STP Highway Plan Reading Vol 2
2.04	DOTD STP English Grammar
2.05	DOTD STP Math Maintenance
2.06	DOTD STM Tort Liability for Maintenance WBT
2.07	DOTD STM Maintenance Activity Guide and Manual Study Guide
2.08	DOTD BP Tort Liability: Depositions and Employee as a Witness WBT
3.	Additional Parish Transportation Ops Courses Due Date: 104 weeks
3.01	DOTD STC Basic Pipe Installation
3.02	DOTD STC Surveying Introduction WBT
3.03	DOTD STC Base Course Inspection
3.04	DOTD STC Embankment and Excavation Inspection
3.05	DOTD STC ACM Paving Inspection Vol 1
3.06	DOTD STC ACM Paving Inspection Vol 2
3.07	DOTD STMR Asphalt Pavement Crack Repair
3.08	DOTD STM Basic Maintenance Leveling
3.09	DOTD STW Maintenance Traffic Control
3.10	DOTD ATSSA Traffic Control Technician (TCT) Louisiana Specific - Expires 4 years
3.11	DOTD ATSSA Traffic Control Supervisor (TCS) Louisiana Specific

DOTD Curriculum - Transportation Ops Manager - District Parish Maintenance

DOTD STW Basic Flagging Refresher WBT - Expires 4 years
DOTD LP Hazardous Materials Annual Refresher - Expires 1 year
DOTD LP Confined Spaces WBT - Expires 3 years
DOTD ATSSA Traffic Control Supervisor Refresher (TCSR) Louisiana Specific - Expires 4 years

TOMS45 - Section 45 – in various units

People in Section 45 in the title – were in programs 45/SGN, 45/SIG, 45/SIS, 45/SST

Section 45 org units: 50374045, 50399401, 50400085, 50400087, 50020486, 50496304, 50496305, 50399403, 50400118, 50400119, 50400120, 50673155, 50399455, 50399455, 50020493, 50020493, 50399456, 50020494, 50399457, 50399458, 50020490, 50400091, 50399459, 50399460, 50399461, 50399462, 50399463, 50399464, 50399465, 50399466



DOTD Program - Transportation Ops Manager – Section 45

1.	Safety Training	Due Date: 13 weeks
1.01	DOTD LP Electrocution Prevention WBT	
1.02	DOTD LP Heat Stress WBT	
1.03	DOTD LP Poisonous Plant Safety WBT	
1.04	DOTD LP Safe Driving WBT	
1.05	DOTD STW Work Zone TTC Safety WBT	
1.06	DOTD STW The ABCs of Work Zone Personnel Safety WBT	
1.07	DOTD STW Basic Flagging Procedures	
1.08	DOTD LP Power/Hand Tool Safety WBT	
1.09	DOTD STM Handling Hazardous Chemicals WBT	
2.	Manager Training	Due Date: 52 weeks
2.01	DOTD STM Tort Liability for Maintenance WBT	
2.02	DOTD BP Tort Liability: Depositions and Employee as a Witness WBT	
2.03	DOTD STP English Grammar	
2.04	DOTD STP Math Maintenance	
2.05	DOTD STM Maintenance Activity Guide and Manual Study Guide	
2.06	DOTD STW Maintenance Traffic Control	

DOTD Curriculum – Transportation Ops Manager - Section 45

DOTD LP Lockout/Tagout WBT - Expires 1 year
DOTD LP Hazardous Materials Annual Refresher - Expires 1 year
DOTD LP Confined Spaces WBT - Expires 3 years
DOTD STW Basic Flagging Refresher WBT - Expires 4 years

DOTD PC Computer Program – Technicians

See main section of Catalog.

TOMS51 - Section 51 - Same training as Bridge Inspectors

Section 51 org units: 50018566, 50400092, 50400097, 50450967, 50459152, 50029131, 50029132, 50029133, 50029442, 50029134, 50590607, 50029135

See training required of Bridge Inspectors.

DOTD PC Computer Program – Technicians

DOTD Curriculum – Bridge Inspectors

DOTD Program - Bridge Inspector 4 and up



Maintenance Trades

Jobs are located in all districts and may be in Sections 42-45-51.

Equipment Operator requirements are assigned on an individual basis. See EOCP Section.

Carpenters, Maintenance Repairers, Painters, Plumbers, Welders, Trade Apprentice Electricians, Electrician Specialists, Electronic Technicians

Job Code	Job Title	S U P	Program Trades Safety	Curric Trades By Loc	Program Maint Math	Program Maint Electr	Program Trades Super	Program Welder Certs
128700	CARPENTER		X	X	X			
128740	CARPENTER MASTER		X	X	X			
128710	CARPENTER FOREMAN	1	X	X	X		X	
131930	GUARD		X	X				
128650	MAINTENANCE REPAIRER 1		X	X	X			
128640	MAINTENANCE REPAIRER 2		X	X	X			
128630	MAINTENANCE REP MASTER		X	X	X			
129230	MAINTENANCE FOREMAN	1	X	X	X		X	
172300	MAINTENANCE SUPERINTEND	1	X	X	X		X	
130200	PAINTER		X	X				
130210	PAINTER MASTER		X	X	X			
129450	PAINTER FOREMAN	1	X	X	X		X	
129500	PLUMBER/PIPEFITTER		X	X	X			
146330	PLUMBER/PIPEFIT MASTER		X	X	X			
129830	WELDER		X	X	X			X
129850	WELDER MASTER		X	X	X			X
129840	WELDER FOREMAN	1	X	X	X		X	X
129810	TRADE APPRENTICE		X	X				
128770	ELECTRICIAN		X	X	X	X		
155150	ELECTRICIAN SPECIALIST		X	X	X	X		
155140	ELECTRICIAN SPEC LEADER		X	X	X	X		
155130	ELECTRICIAN SPEC FOREMAN	1	X	X	X	X	X	
132990	ELECTRONIC TECH TRAINEE		X	X	X	X		
131740	ELECTRONIC TECH		X	X	X	X		
156750	ELECTRONIC TECH ADV		X	X	X	X		
131750	ELECTRONIC TECH SUPV	1	X	X	X	X	X	

DOTD Program - Maintenance Trades Safety

Due Date: 13 weeks

1.	Safety Training
1.01	DOTD LP Electrocutation Prevention WBT
1.02	DOTD LP Heat Stress WBT
1.03	DOTD LP Poisonous Plant Safety WBT
1.04	DOTD LP Safe Driving WBT
1.05	DOTD LP Asbestos Awareness WBT
1.06	DOTD LP Power/Hand Tool Safety WBT



Maintenance Trades (continued) Programs and Curricula

DOTD Program - Maintenance Math

Due Date: 104 weeks

1.	Required Courses
1.01	DOTD STP Math Maintenance

DOTD Program - Maintenance Electricity

Due Date: 104 weeks

1.	Required Courses
1.01	DOTD STM Electrical 201 - Basic Electricity
1.02	DOTD STM Electrical 205 - Electrical Safety and Protection

DOTD Program - Maintenance Trades Supervisors

Due Date: 52 weeks

1.	Required Courses
1.01	DOTD STM Maintenance Activity Guide and Manual Study Guide
1.02	DOTD STM Tort Liability for Maintenance
1.03	DOTD BP Tort Liability: Depositions and Employee as a Witness WBT
1.04	DOTD STP English Grammar

DOTD Program - Welder Certifications

Due Date: 104 weeks

1.	Welding Certifications
1.01	DOTD-CRED Welding Certificate 1G
1.02	DOTD-CRED Welding Certificate 2G
1.03	DOTD-CRED Welding Certificate 3G
1.04	DOTD-CRED Welding Certificate 4G

Nineteen DOTD STMW Welding...WBTs are available for study but are not required in the Curriculum.

LOCATION DEPENDENT

DOTD Curriculum - Trades

(all except those in Section 45 below)

DOTD LP Hazardous Materials Annual Refresher - Expires 1 year
DOTD LP Lockout/Tagout WBT - Expires 1 year
DOTD LP Confined Spaces WBT - Expires 3 years

DOTD Curriculum - Trades - Section 45

Section 45, Units 7xx - 50399455, 50020493, 50020493, 50399456, 50399456, 50020494, 50399457, 50399458, 50020490, 50400091, 50399459, 50399460, 50399461, 50399462, 50399463, 50399464, 50399465, 50399466

DOTD STW Maintenance Traffic Control
DOTD STM Handling Hazardous Chemicals WBT
DOTD STW Basic Flagging Refresher WBT - Expires 4 years
DOTD LP Confined Spaces WBT - Expires 3 years
DOTD LP Lockout/Tagout WBT - Expires 1 year



Sheet Metal Workers

Jobs are located in Section 45.

Job Code	Job Title	S U P	Program Sheet Metal Workers
129740	SHEET METAL WORKER		X
146840	SHEET METAL MASTER		X
129730	SHEET METAL FOREMAN	1	X

DOTD Program - Sheet Metal Workers

1.	Safety Training	Due Date: 13 weeks
1.01	DOTD LP Electrocutation Prevention WBT	
1.02	DOTD LP Heat Stress WBT	
1.03	DOTD STS Safe Driving WBT	
1.04	DOTD STS Power/Hand Tool Safety WBT	
1.05	DOTD STW The ABCs of Work Zone Personnel Safety WBT	
1.06	DOTD STW Work Zone TTC Safety WBT	
2.	Required Courses	Due Date: 91 weeks
2.01	DOTD STP Math Maintenance	
2.02	DOTD STP English Grammar	
2.03	DOTD STM Tort Liability for Maintenance WBT	
2.04	DOTD BP Tort Liability: Depositions and Employee as a Witness WBT	

Assign EOCP requirements if workers operate a Fork Lift.



Equipment Inspectors and Superintendents

EQUIPM Jobs are located in all Districts and in Section 42.

Equipment Operator requirements are assigned on an individual basis. See EOCP Section.

Job Code	Job Title	S U P	Program Eq Insp	Curriculum Job EQUIPM
128800	EQUIPMENT INSPECTOR		X	X
128810	EQUIP SUPERINTENDENT	2	X	X

DOTD Program - Equipment Inspector and Superintendent

1.	Safety Training	Due Date: 13 weeks
1.01	DOTD STS Electrocutation Prevention WBT	
1.02	DOTD STS Heat Stress WBT	
1.03	DOTD STS Poisonous Plant Safety WBT	
1.04	DOTD STS Safe Driving WBT	
1.05	DOTD STS Power/Hand Tool Safety WBT	
1.06	DOTD STW The ABCs of Work Zone Personnel Safety WBT	
1.07	DOTD STW Work Zone TTC Safety WBT	
1.08	DOTD STW Basic Flagging Procedures	
2.	Required Courses	Due Date: 91 weeks
2.01	DOTD STP Math Maintenance	

DOTD Curriculum – Equipment Inspectors and Superintendent

DOTD LP Lockout/Tagout WBT - Expires 1 year
DOTD LP Confined Spaces WBT - Expires 3 years
DOTD LP Hazardous Materials Annual Refresher - Expires 1 year



Mechanics

MECHAN Jobs are located in all districts and in Section 42. (071 units)

Equipment Operator requirements are assigned on an individual basis. See EOCP Section.

Job Code	Job Title	S U P	Program Mechanic Safety	Curriculum Job MECHAN
103360	MECHANIC 1		X	X
103390	MECHANIC 2		X	X
103370	MECHANIC 3		X	X
103380	MECHANIC 4		X	X
103400	MECHANIC SUPERVISOR A	1	X	X
103410	MECHANIC SUPERVISOR B	1	X	X
103420	MECHANIC-BODY REPAIRER 1		X	X
103430	MECHANIC-BODY REPAIRER 2		X	X

Mechanics on Ferries, 42-072, follow the programs and curricula for Ferryboat

DOTD Program - Mechanics

1.	Safety Training	Due Date: 13 weeks
1.01	DOTD LP Electrocutation Prevention WBT	
1.02	DOTD LP Heat Stress WBT	
1.03	DOTD LP Safe Driving WBT	
1.04	DOTD LP Asbestos Awareness WBT	
1.05	DOTD LP Power/Hand Tool Safety WBT	
1.06	DOTD STW The ABCs of Work Zone Personnel Safety WBT	
1.07	DOTD STW Work Zone TTC Safety WBT	
2.	Required Courses	Due Date: 91 weeks
2.01	DOTD STP Math Maintenance	

DOTD Curriculum - Mechanics

DOTD LP Lockout/Tagout WBT - Expires 1 year
DOTD LP Hazardous Materials Annual Refresher - Expires 1 year



Bridge Inspectors

Bridge Inspector jobs are located in the Districts in units 051 and in Section 51, unit 002. Section 51 Engineering Technicians and Transportation Ops Managers are in these programs too.

Equipment Operator requirements are assigned on an individual basis. See EOCP Section. Manually assign to Aerial Lift, Bucket Truck and Bridge Inspection Truck.

Job Code	Job Title	S U P	DOTD PC Program	Curriculum Bridge Insp	Program BRINSP Job
173760	BRIDGE INSPECTOR 1 and Section 51 ENGR TECH 1		X	X	1
173770	BRIDGE INSPECTOR 2 and Section 51 ENGR TECH 2		X	X	2
173780	BRIDGE INSPECTOR 3 and Section 51 ENGR TECH 3		X	X	3
173790	BRIDGE INSPECTOR 4 and Section 51 ENGR TECH 4		X	X	4
173800	BRIDGE INSPECTOR 5		X	X	4
	Section 51 TRANS OPS MGR	2	X	X	4

DOTD PC Computer Program – Technicians is assigned. Outlook Level 1 is recommended.

The following course is recommended when available: DOTD RS 13 Inspection of Local Bridges

DOTD Curriculum – Bridge Inspectors

DOTD LP Confined Spaces WBT - Expires 3 years
DOTD LP Lockout/Tagout WBT - Expires 1 year
DOTD LP Boating Safety Refresher - Expires 3 years
DOTD STW Basic Flagging Refresher WBT - Expires 4 years
DOTD NHI 130053 Bridge Inspection Refresher Training - Expires 5 years

DOTD Program - Bridge Inspector 1

1.	Safety Training	Due Date: 13 weeks
1.01	DOTD LP Electrocutation Prevention WBT	
1.02	DOTD LP Heat Stress WBT	
1.03	DOTD LP Poisonous Plant Safety WBT	
1.04	DOTD LP Scaffolding Safety WBT	
1.05	DOTD LP Power/Hand Tool Safety WBT	
1.06	DOTD STW The ABCs of Work Zone Personnel Safety WBT	
1.07	DOTD STW Work Zone TTC Safety WBT	
1.08	DOTD STW Basic Flagging Procedures	
1.09	DOTD LP Safe Driving WBT	

DOTD Training Requirements Catalog



2.	Fundamental Training	Due Date: 39 weeks
2.01	DOTD LP Boating Safety Course WBT-External	
2.02	DOTD STP Standard Specifications	
2.03	DOTD STP Math Construction Part 1	
2.04	DOTD STEq Aerial Lift Safety WBT	
2.05	DOTD STEq Bucket Truck Safety WBT	
3.	Bridge Inspector 1	Due Date: 52 weeks
3.01	DOTD STP Highway Plan Reading Vol 1	
3.02	DOTD STP Highway Plan Reading Vol 2	
3.03	DOTD STP Math Construction Part 2	

DOTD Program - Bridge Inspector 2

1.	Safety Training	Due Date: 13 weeks
1.01	DOTD LP Electrocutation Prevention WBT	
1.02	DOTD LP Heat Stress WBT	
1.03	DOTD LP Poisonous Plant Safety WBT	
1.04	DOTD LP Scaffolding Safety WBT	
1.05	DOTD LP Power/Hand Tool Safety WBT	
1.06	DOTD STW The ABCs of Work Zone Personnel Safety WBT	
1.07	DOTD STW Work Zone TTC Safety WBT	
1.08	DOTD STW Basic Flagging Procedures	
1.09	DOTD LP Safe Driving WBT	
2.	Fundamental Training	Due Date: 39 weeks
2.01	DOTD LP Boating Safety Course WBT-External	
2.02	DOTD STP Standard Specifications	
2.03	DOTD STP Math Construction Part 1	
2.04	DOTD STEq Aerial Lift Safety WBT	
2.05	DOTD STEq Bucket Truck Safety WBT	
3.	Bridge Inspector 1	Due Date: 52 weeks
3.01	DOTD STP Highway Plan Reading Vol 1	
3.02	DOTD STP Highway Plan Reading Vol 2	
3.03	DOTD STP Math Construction Part 2	
4.	Bridge Inspector 2	Due Date: 52 weeks
4.01	DOTD STMR Cleaning/Clearing of Bridges WBT	
4.02	DOTD STM Movable Bridges - Persons Duties - Expires 5 years	
4.03	DOTD NHI 130055 Safety Inspection of In-Service Bridges	
4.04	DOTD STW Maintenance Traffic Control	



DOTD Program - Bridge Inspector 3

1.	Safety Training	Due Date: 13 weeks
1.01	DOTD LP Electrocutation Prevention WBT	
1.02	DOTD LP Heat Stress WBT	
1.03	DOTD LP Poisonous Plant Safety WBT	
1.04	DOTD LP Scaffolding Safety WBT	
1.05	DOTD LP Power/Hand Tool Safety WBT	
1.06	DOTD STW The ABCs of Work Zone Personnel Safety WBT	
1.07	DOTD STW Work Zone TTC Safety WBT	
1.08	DOTD STW Basic Flagging Procedures	
1.09	DOTD LP Safe Driving WBT	
2.	Fundamental Training	Due Date: 39 weeks
2.01	DOTD LP Boating Safety Course WBT-External	
2.02	DOTD STP Standard Specifications	
2.03	DOTD STP Math Construction Part 1	
2.04	DOTD STEq Aerial Lift Safety WBT	
2.05	DOTD STEq Bucket Truck Safety WBT	
3.	Bridge Inspector 1	Due Date: 52 weeks
3.01	DOTD STP Highway Plan Reading Vol 1	
3.02	DOTD STP Highway Plan Reading Vol 2	
3.03	DOTD STP Math Construction Part 2	
4.	Bridge Inspector 2	Due Date: 52 weeks
4.01	DOTD STMR Cleaning/Clearing of Bridges WBT	
4.02	DOTD STM Movable Bridges - Persons Duties - Expires 5 years	
4.03	DOTD NHI 130055 Safety Inspection of In-Service Bridges	
4.04	DOTD STW Maintenance Traffic Control	
5.	Bridge Inspector 3	Due Date: 52 weeks
5.01	DOTD STMR Concrete Bridge Deck Repair WBT	
5.02	DOTD NHI 130078 - Fracture Critical Inspection Techniques for Steel Bridges	
5.03	DOTD STP English Grammar	



DOTD Program - Bridge Inspector 4 and 5

1.	Safety Training	Due Date: 13 weeks
1.01	DOTD LP Electrocutation Prevention WBT	
1.02	DOTD LP Heat Stress WBT	
1.03	DOTD LP Poisonous Plant Safety WBT	
1.04	DOTD LP Scaffolding Safety WBT	
1.05	DOTD LP Power/Hand Tool Safety WBT	
1.06	DOTD STW The ABCs of Work Zone Personnel Safety WBT	
1.07	DOTD STW Work Zone TTC Safety WBT	
1.08	DOTD STW Basic Flagging Procedures	
1.09	DOTD LP Safe Driving WBT	
2.	Fundamental Training	Due Date: 39 weeks
2.01	DOTD LP Boating Safety Course WBT-External	
2.02	DOTD STP Standard Specifications	
2.03	DOTD STP Math Construction Part 1	
2.04	DOTD STEq Aerial Lift Safety WBT	
2.05	DOTD STEq Bucket Truck Safety WBT	
3.	Bridge Inspector 1	Due Date: 52 weeks
3.01	DOTD STP Highway Plan Reading Vol 1	
3.02	DOTD STP Highway Plan Reading Vol 2	
3.03	DOTD STP Math Construction Part 2	
4.	Bridge Inspector 2	Due Date: 52 weeks
4.01	DOTD STMR Cleaning/Clearing of Bridges WBT	
4.02	DOTD STM Movable Bridges - Persons Duties - Expires 5 years	
4.03	DOTD NHI 130055 Safety Inspection of In-Service Bridges	
4.04	DOTD STW Maintenance Traffic Control	
5.	Bridge Inspector 3	Due Date: 52 weeks
5.01	DOTD STMR Concrete Bridge Deck Repair WBT	
5.02	DOTD NHI 130078 - Fracture Critical Inspection Techniques for Steel Bridges	
5.03	DOTD STP English Grammar	
5.	Bridge Inspector 4	Due Date: 52 weeks
5.01	DOTD STM Tort Liability for Maintenance	
5.02	DOTD BP Tort Liability: Depositions and Employee as a Witness WBT	
5.03	DOTD STM Maintenance Activity Guide and Manual Study Guide	
5.04	DOTD STM Electrical 201 - Basic Electricity	
5.05	DOTD STM Electrical 205 - Electrical Safety and Protection	



Ferryboat Jobs and Personnel at Plaquemine Fleet Landing

Ferryboat Jobs

Job Code	Job Title	S U P	Program Ferryboat Safety	Program Ferryboat Manager	Curriculum Ferryboat Safety	Curriculum USCG Licensure
174200	FERRYBOAT DECKHAND 1		X		X	
174210	FERRYBOAT DECKHAND 2		X		X	
174220	FERRYBOAT DECKHAND 3		X		X	
174230	FERRYBOAT OPERATOR 1		X			X
174240	FERRYBOAT OPERATOR 2		X			X
174250	FERRYBOAT OPERATOR 3		X			X
174260	FERRYBOAT OPERATOR SENIOR		X			X
174270	FERRYBOAT OPERATION SUPER	1	X			X
174280	FERRYBOAT OPERATION MGR A	2	X	X	X	
174290	FERRYBOAT OPERATION MGR B	2	X	X	X	
Unit 42-072, any job title except Admin Coordinators			X		X	

DOTD Program - Ferryboat Job Safety

Due Date: 13 weeks

1.	Safety Training
1.01	DOTD LP Electrocutation Prevention WBT
1.02	DOTD LP Power/Hand Tool Safety WBT
1.03	DOTD STM Ferries-Personnel Duties
1.04	DOTD LP Boating Safety Course WBT-External

DOTD Program - Ferryboat Managers A and B

Due Date: 104 weeks

1.	Required Courses
1.01	DOTD STP Math Maintenance
1.02	DOTD STM Tort Liability for Maintenance
1.03	DOTD BP Tort Liability: Depositions and Employee as a Witness WBT
1.04	DOTD STP English Grammar

Curricula – Courses Must Be Repeated When They Expire

DOTD Curriculum - Ferryboat Safety

DOTD Curriculum - Ferryboat USCG Licensure

DOTD LP Lockout/Tagout WBT - Expires 1 year	DOTD LP Lockout/Tagout WBT - Expires 1 year
DOTD LP Confined Spaces WBT - Expires 3 years	DOTD LP Confined Spaces WBT - Expires 3 years
DOTD LP Hazardous Materials Annual Refresher WBT - Expires 1 year	DOTD LP Hazardous Materials Annual Refresher WBT - Expires 1 year
DOTD LP Boating Safety Refresher - Expires 3 years	DOTD-CRED USCG Merchant Mariner Credential - Expires 5 years

For Job titles not requiring Merchant Mariner Credential, but where an employee has the credential, the employee may be manually subscribed to that curriculum instead.



ITS Technicians

Most jobs are located in Section 56. Jobs may also be located in other Operations Sections.

Equipment Operator requirements are assigned on an individual basis. See EOCP Section.

Job Code	Job Title	S U P	Program ITS Tech	Curriculum ITS Tech
173680	ITS TECHNICIAN 1		X	X
173690	ITS TECHNICIAN 2		X	X
173700	ITS TECHNICIAN 3		X	X
173710	ITS TECHNICIAN SPECIALIST		X	X
173720	ITS TECHNICIAN SUPERVISOR	1	X	X
173730	ITS TECHNICIAN MANAGER	2	X	X

DOTD Program - ITS Technicians

1.	Safety Training	Due Date: 13 weeks
1.01	DOTD LP Electrocutation Prevention WBT	
1.02	DOTD LP Heat Stress WBT	
1.03	DOTD STM Handling Hazardous Chemicals WBT	
1.04	DOTD LP Safe Driving WBT	
1.05	DOTD LP Power/Hand Tool Safety WBT	
1.06	DOTD STW The ABCs of Work Zone Personnel Safety WBT	
1.07	DOTD STW Work Zone TTC Safety WBT	
1.08	DOTD STW Basic Flagging Procedures	
2.	Required Courses	Due Date: 91 weeks
2.01	DOTD STW Maintenance Traffic Control	
2.02	DOTD STP English Grammar	
2.03	DOTD STP Math Maintenance	
2.04	DOTD STM Tort Liability for Maintenance	
2.05	DOTD BP Tort Liability: Depositions and Employee as a Witness WBT	

DOTD Curriculum – ITS Technicians

DOTD LP Lockout/Tagout WBT - Expires 1 year
DOTD STW Basic Flagging Refresher WBT - Expires 4 years

ITS Tech in 51-008 (50450967) is not required to have the curriculum above.



SELECT COURSES - ASSIGNMENTS in PROGRAMS / CURRICULA

Courses of very high importance that are used across multiple jobs titles. Show Programs and Curricula where these courses are assigned to employees.

DOTD ATSSA TCT, TCS, TCSR

DOTD ATSSA Traffic Control Technician (TCT) Louisiana Specific - Expires 4 years

This course is usually initially assigned in the program for the job title. Once the course is complete, a curriculum, DOTD Curriculum ATSSA Traffic Control Technician, is assigned to people. If ATSSA TCS is complete, TCT is no longer required.

Programs

- DOTD Program ET-STP District Construction Inspection
- DOTD Program ET-STP District Design - Road Design
- DOTD Program ET-STP District Design - Survey
- DOTD Program ET-STP District Rail Coordinator
- DOTD Program ET-STP District Traffic Engineering
- DOTD Program ET-STP District Training
- DOTD Program ET-STP District Utility Permits
- DOTD Program ET-STP Section 27 - Traffic Engineering
- DOTD Program ET-STP Section 30 - Survey Boundary Checking
- DOTD Program ET-STP Section 30 - Survey Field Crew
- DOTD Program ET-STP Section 33 - Concrete and Asphalt DCLs
- DOTD Program - District Sign Specialist 2
- DOTD Program - District Sign Specialist Leader
- DOTD Program - Transportation Ops Manager - District Parish Maintenance
- DOTD Program - Transportation Ops Manager - District Traffic

Curriculum

DOTD Curriculum ATSSA TCT Traffic Control Technician

Employees who complete the TCT course are put in this curriculum so they have to repeat the course every 4 years, so long as they have not completed TCS.

All rules include has not completed ATSSA TCS.

ET (2-DCL) + Districts Only + Contains Org Unit G2xx + Not Item Complete TCS + Not Office Personnel
ET (2-DCL) + Districts Only + Contains Org Unit G001 + Not Item Complete TCS + Not Office Personnel
ET (2-DCL) + Districts Only + Contains Org Unit G002 + Not Item Complete TCS
ET (2-DCL) + Districts Only + Contains Org Unit G003 + Not Item Complete TCS
ET (2-DCL) + Districts Only + Contains Org Unit G500 + Not Item Complete TCS
ET (2-DCL) + Districts Only + Contains Org Unit G15x + Not Item Complete TCS + Not Office Personnel
ET (2-DCL) + Contains Org Unit S33 + Not Item Complete TCS
ET (2-DCL) + Contains Org Unit S27 + Not Item Complete TCS
District Sign Specialist (2-3)+Hwy Foreman 2 + Contains Org Unit G75x + Not Item Complete TCS
ET (2-DCL) + Contains Org Unit S30 + Not Item Complete TCS



DOTD ATSSA Traffic Control Supervisor (TCS) Louisiana Specific - Expires 4 years

Programs

DOTD Program – District Sign Specialist Leader

DOTD Program – Transportation Ops Manager – District Parish Maintenance

Curriculum

DOTD Curriculum ATSSA TCS Traffic Control Supervisor - Engineering Technician 5

All rules contain if TCT is Complete and TCS is not complete and Jobs 166230, 166250, 166260

Di, Units 001 & 002: 441 org units

Di, Units 500: 52 org units

Di, Units 15x: 43 org units

Di, Units 2xx: 99 org units

Sect 33, Units : 10 org units

DOTD ATSSA Traffic Control Supervisor Refresher (TCSR) Louisiana Specific - Expires 4 years

DOTD Curriculum ATSSA TCSR Traffic Control Supervisor Refresher

TCS is Complete and Job code is NOT one of the 4 listed below.

109100 – ENGINEER 8, 171280 – ENGINEER 9,

109260 – DOTD CHIEF ENGINEER, 162790 – DOTD DEPUTY CHIEF ENGINEER

DOTD BP Ethics for Construction WBT – Expires 3 years

DOTD Curriculum BP Ethics for Construction

District Org Units G15x and G2xx (Includes all jobs in the org units ETs, Engineers, etc.)

DOTD LP Boating Safety Course WBT-External

Curriculum: DOTD-ESA Outboard Motor Operator (individually assigned)

Programs: DOTD Program ET-STP District Design – Survey

DOTD Program ET-STP Section 30 – Survey Field Crew

DOTD Program – Bridge Inspector 1

DOTD Program – Bridge Inspector 2

DOTD Program – Bridge Inspector 3

DOTD Program – Bridge Inspector 4 and 5

DOTD Program – Ferryboat Job Safety

DOTD LP Boating Safety Refresher WBT – Expires 3 years

Curriculums

DOTD Safety – Boating Safety Refresher (Curriculum)

Uses the Assignment Profiles for these programs.

DOTD Program ET-STP District Design - Survey

DOTD Program ET-STP Section 30 - Survey Field Crew

DOTD Curriculum – Bridge Inspectors

DOTD Curriculum – Ferryboat Safety

DOTD-ESA Outboard Motor Operator



DOTD LP Confined Spaces Class ILT

Not assigned. Usually given to supervisors.
After completion, must take WBT every three years.

DOTD LP Confined Spaces WBT - Expires 3 years

- DOTD Curriculum – Bridge Inspectors
- DOTD Curriculum – Bridge Operators
- DOTD Curriculum – Equipment Inspectors
- DOTD Curriculum – Mobile Equipment Operator
- DOTD Curriculum – Navigational Lock Operators
- DOTD Curriculum – Roadside Development
- DOTD Curriculum – Transportation Ops Manager – District Parish Maintenance
- DOTD Curriculum – Transportation Ops Manager – Section 45
- DOTD Curriculum – Trades
- DOTD Curriculum – Ferryboat USCG Licensure
- DOTD Curriculum LP Confined Spaces WBT after ILT Class

DOTD LP Lockout/Tagout WBT - Expires 1 year

- DOTD Curriculum – Bridge Inspectors
- DOTD Curriculum – Bridge Operators
- DOTD Curriculum – Equipment Inspectors
- DOTD Curriculum – ITS Technicians
- DOTD Curriculum – Mechanics
- DOTD Curriculum – Navigational Lock Operators
- DOTD Curriculum – Transportation Ops Manager – Section 45
- DOTD Curriculum – Trades
- DOTD Curriculum – Trades – Section 45
- DOTD Curriculum – Ferryboat Safety
- DOTD Curriculum – Ferryboat USCG Licensure



DOTD LP Hazardous Materials FULL Course WBT

DOTD Basic LP Curriculum – Hazardous Materials Full Course

Districts: There are 673 org units.

Section 19 all: 15 Org Units 50018527, 50020127, 50020128, 50020129, 50020130, 50020131, 50020132, 50020133, 50020134, 50020135, 50020136, 50020137, 50020138, 50020139, 50023808

Section 22 all: 20 Org Units 50018561, 50021849, 50021850, 50021851, 50021854, 50021855, 50021856, 50021857, 50021859, 50021860, 50021861, 50021862, 50021863, 50021864, 50021865, 50021867, 50021869, 50021870, 50384551, 50384552

Section 28 all: 8 Org Units 50018515, 50018782, 50018783, 50018784, 50356684, 50383258, 50383259, 50616255

Section 42 Units 006, 071, 072, 862: Org Units 50018575, 50029130, 50328558, 50400095, 50400096, 50406580, 50406585, 50406810, 50406811, 50406817, 50406818, 50406819

Section 51 Units 700, 720, 726, 727, 728, 740: Org Units 50029131, 50029132, 50029133, 50029134, 50029135, 50029442, 50590607

DOTD LP Hazardous Materials Annual Refresher WBT - Expires 1 year

DOTD Curriculum LP Hazardous Materials Refresher

Districts Units 051: 76 job classes are exempt and there are 18 org units.

Districts Units 07x: 76 job classes are exempt and there are 33 org units.

Districts Units 15x: 76 job classes are exempt and there are 42 org units.

Districts Units 5xx: 76 job classes are exempt and there are 118 org units.

Districts Units 7xx: 76 job classes are exempt and there are 96 org units.

Section 19 all: Org Units as above for Full course

Section 22 all: Org Units as above for Full course

Section 28 all: Org Units as above for Full course

DOTD Curriculum - Equipment Inspectors Job codes 00128800, 00128810

DOTD Curriculum –Mechanics Job Codes 103420-103430-103360-103390-103370-103380-103400-103410 + Not ORG Unit S42/G072

DOTD Curriculum - Mobile Equipment Operator HF1 and Parish Mtn; Job codes 128940 – 134120
Job Codes 128940-134120-152580-108620-128950-160670 + Not Contains ORG G77+S45 (49)
Job Codes 103460-103440-102860-102890 + Not Contains ORG G77+S45 (49 org units)

DOTD Curriculum - Roadside Development Herbicide Applicator Job Codes 155460-152580-108620

DOTD Curriculum - District Sign Specialist Job Codes 151980;
Job Codes 151990, Job Code 128950 +ORG Unit contains G75
Job Codes 173370, Job Code 128950 + G75 (31 org units)

DOTD Curriculum - Transportation Operations Manager - District Parish Maintenance

Job Code 160680 + All Districts + Not Units 002-003 (Matches 673 org units, Not matches 154)

DOTD Curriculum - Transportation Operations Manager - Section 45

Job Code 160680 + Section 45 (36 org)

DOTD Curriculum – Trades Carpenters (3), Guard (1), Mtn Repairer (4), Painter (3), Plumber (2), Trade Apprentice (1), Electrician (4) + not 45, Electronic Tech (4) + not 45, Welder (3) + not 45

DOTD Curriculum - Ferryboat Safety Job Codes 174200-174210-174220-174280-174290;

Job Codes 168040,168050,168060,168070 and Orgs 50018575,50029130,50400095,50400096

DOTD Curriculum - Ferryboat USCG Licensure

Job Codes 174200-174210-174220-174270-174280-174290



DOTD NU Radiation Safety Refresher WBT – Expires 3 years

DOTD Curriculum NU Radiation Safety Refresher

Completed Item 50574038 DOTD NU Radiation Safety
and

JobCode	Job Title
107680	ENGINEER INTERN 1
107690	ENGINEER INTERN 2
109140	ENGINEER 3
109150	ENGINEER 4
109160	ENGINEER INTERN APPL
161000	ENGR TECHNICIAN 1
161010	ENGR TECHNICIAN 2
161240	ENGR TECHNICIAN 3
161250	ENGR TECHNICIAN 4
166230	ENGR TECHNICIAN 5
166250	ENGR TECHNICIAN 7
166260	ENGR TECHNICIAN DCL
168070	ADMIN COORDINATOR 4
176520	CONSTRUCTION INSPECTOR 1
176521	CONSTRUCTION INSPECTOR 2
176522	CONSTRUCTION INSPECTOR 3
176523	CONSTRUCTION INSPECTOR 4
176524	CONSTRUCTION INSPECTOR 5
176525	CONSTRUCTION INSPECTOR SUP
103460	MOB EQUIP OPER 1
103440	MOB EQUIP OPER 2
102860	MOB EQUIP OPER HEAVY 1
102890	MOB EQUIP OPER HEAVY 2



DOTD STW Basic Flagging

Programs (31 programs)

DOTD Program ET-STP District Area Engineer Assistant
DOTD Program ET-STP District Construction Inspection
DOTD Program ET-STP District Design - Road Design
DOTD Program ET-STP District Design - Survey
DOTD Program ET-STP District Lab Basic
DOTD Program ET-STP District Rail Coordinator
DOTD Program ET-STP District Traffic Engineering
DOTD Program ET-STP District Training
DOTD Program ET-STP District Utility Permits
DOTD Program ET-STP Section 19 - LTRC Labs
DOTD Program ET-STP Section 21 - Data Collection Unit 003
DOTD Program ET-STP Section 33 - Concrete and Asphalt DCLs
DOTD Program ET-STP Section 45 - Traffic Services
DOTD Program - Bridge Inspector 1
DOTD Program - Bridge Inspector 2
DOTD Program - Bridge Inspector 3
DOTD Program - Bridge Inspector 4 and 5
DOTD Program - Engineer Interns
DOTD Program - Equipment Inspector and Superintendent
DOTD Program - ITS Technicians
DOTD Program - Mobile Equipment Operators Standard
DOTD Program - Mobile Equipment Operators Striping
DOTD Program - Mobile Equipment Operators - Section 51
DOTD Program - Roadside Development
DOTD Program - District Sign Specialist 1
DOTD Program - District Sign Specialist 2
DOTD Program - District Sign Specialist Leader
DOTD Program - Maintenance Highway Foreman 1 and Parish Superintendent
DOTD Program - Maintenance Highway Worker Safety
Bridge Operators
Navigational Lock Operators
DOTD Program - Transportation Ops Manager - District Parish Maintenance
DOTD Program - Transportation Ops Manager - Section 45

Curriculum

DOTD Curriculum - Trades - Section 45 (Curriculum contains 6 courses)
There are 36 org units in Section 45.
Electrician and Specialists 128770-155150-155140-155130 in Section 45
Electronic Techs 131740-131750-132990-156750 in Section 45
Welders 129830-129840-129850 in Section 45



DOTD STW Basic Flagging Refresher WBT – Expires 4 years

- DOTD Curriculum - Bridge Inspectors
- DOTD Curriculum - Bridge Operators
- DOTD Curriculum - District Sign Specialist
- DOTD Curriculum - ITS Technicians
- DOTD Curriculum - Mobile Equipment Operator
- DOTD Curriculum - Roadside Development Herbicide Applicator
- DOTD Curriculum - Trades – Section 45
- DOTD Curriculum - Transportation Operations Manager - District Parish Maintenance
- DOTD Curriculum - Transportation Operations Manager - Section 45

DOTD Curriculum STW Flagging Refresher

- Same Assignment Profiles as the following Programs.
 - DOTD Program - Mobile Equipment Operators Striping
 - DOTD Program ET-STP District Design – Road Design
 - DOTD Program ET-STP District Design – Survey
 - DOTD Program ET-STP District Traffic Engineering
 - DOTD Program ET-STP District Utility Permits
 - DOTD Program ET-STP Section 19 – LTRC Labs
 - DOTD Program ET-STP Section 21 – Data Collection Unit 003
 - DOTD Program ET-STP Section 33 – Concrete and Asphalt DCLs
 - DOTD Program ET-STP District Trainers

DOTD STW Maintenance Traffic Control

DOTD Curriculum - Trades - Section 45

- Electrician 128770-155150-155140-155130 in Section 45 (36 org units)
- Electronic Tech 132990-131740-156750-131750 in Section 45 (36 org units)
- Welder 129830-129850-129840 in Section 45 (36 org units)

Programs

- DOTD Program ET-STP District Rail Coordinator
- DOTD Program ET-STP Section 19 – LTRC Labs
- DOTD Program ET-STP Section 21 - Data Collection Unit 003
- DOTD Program – Bridge Inspector 2
- DOTD Program – Bridge Inspector 3
- DOTD Program – Bridge Inspector 4 and 5
- DOTD Program – ITS Technicians
- DOTD Program – Roadside Development
- DOTD Program – Transportation Ops Manager – District Parish Maintenance
- DOTD Program – Transportation Ops Manager – Section 45
- DOTD Program – Maintenance Traffic Control

Job Codes listed below and not 49 Org Units (ORG77+S45)

JobCode	Job Title
102860	MOB EQUIP OPER HEAVY 1
102890	MOB EQUIP OPER HEAVY 2
128940	HIGHWAY FOREMAN 1
128950	HIGHWAY FOREMAN 2
134120	PARISH HWY MAIN SUPT
108620	ROADSIDE DEV DIST COORD
160670	HWY SIGN/PAVE MARK SUPV



DOTD STW Maintenance Traffic Control Refresher – Expires 4 years

Assigned to specific jobs when the course **DOTD STW Maintenance Traffic Control** is complete.

DOTD Curriculum Maintenance Traffic Control Refresher

JobCode	Job Title
102860	MOB EQUIP OPER HEAVY 1
102890	MOB EQUIP OPER HEAVY 2
128770	ELECTRICIAN
128940	HIGHWAY FOREMAN 1
128950	HIGHWAY FOREMAN 2
129830	WELDER
129840	WELDER FOREMAN
134120	PARISH HWY MAIN SUPT
155130	ELECTRICIAN SPEC FOREMAN
155140	ELECTRICIAN SPEC LEADER
155150	ELECTRICIAN SPECIALIST
155460	ROADSIDE DEV HERB APP
160680	TRANSPORTATION OPS MGR
161000	ENGR TECHNICIAN 1
161010	ENGR TECHNICIAN 2
161240	ENGR TECHNICIAN 3
161250	ENGR TECHNICIAN 4
166230	ENGR TECHNICIAN 5
166250	ENGR TECHNICIAN 7
166260	ENGR TECHNICIAN DCL
173720	ITS TECHNICIAN SUPERVISOR
173770	BRIDGE INSPECTOR 2
173780	BRIDGE INSPECTOR 3
173790	BRIDGE INSPECTOR 4
173800	BRIDGE INSPECTOR 5



End

Of

DOTD Training Requirements Catalog